



# ΕΦΗΜΕΡΙΔΑ ΤΗΣ ΚΥΒΕΡΝΗΣΕΩΣ ΤΗΣ ΕΛΛΗΝΙΚΗΣ ΔΗΜΟΚΡΑΤΙΑΣ

9 Απριλίου 2026

ΤΕΥΧΟΣ ΤΕΤΑΡΤΟ

Αρ. Φύλλου 255

## ΑΠΟΦΑΣΕΙΣ

Αριθμ. ΥΠΕΝ/ΓΔΠΠ/33643/687

**Χαρακτηρισμός τμήματος των Περιφερειακών Περιοχών 1 και 2 (ΠΠ1 και ΠΠ2) του Εθνικού Πάρκου Λιμνοθαλασσών Μεσολογγίου - Αιτωλικού, κάτω ρου και εκβολών Αχελώου και Εύηνου και νήσων Εχινάδων, που αφορούν το ποτάμιο σύστημα Αχελώου και Εύηνου, ως προστατευόμενου τοπίου και προστατευόμενου φυσικού σχηματισμού.**

Ο ΠΡΟΪΣΤΑΜΕΝΟΣ ΓΕΝΙΚΗΣ ΔΙΕΥΘΥΝΣΗΣ ΠΕΡΙΒΑΛΛΟΝΤΙΚΗΣ ΠΟΛΙΤΙΚΗΣ  
ΤΟΥ ΥΠΟΥΡΓΕΙΟΥ ΠΕΡΙΒΑΛΛΟΝΤΟΣ ΚΑΙ ΕΝΕΡΓΕΙΑΣ

Έχοντας υπόψη:

1. Τον ν. 1650/1986 «Για την προστασία του περιβάλλοντος» (Α' 160) και ιδίως τα άρθρα 19 και 21.
2. Τις διατάξεις του ν. 3937/2011 «Διατήρηση της βιοποικιλότητας και άλλες διατάξεις» (Α' 60).
3. Τις διατάξεις του ν. 2204/1994 «Κύρωση Σύμβασης για τη βιολογική ποικιλότητα» (Α' 59).
4. Την Ευρωπαϊκή Στρατηγική για τη βιοποικιλότητα με ορίζοντα το 2030 - Επαναφορά της Φύσης στη ζωή μας. COM/2020/380 final.
5. Τις διατάξεις του ν. 3028/2002 «Για την προστασία των Αρχαιοτήτων και εν γένει της Πολιτιστικής Κληρονομιάς» (Α' 153).
6. Το άρθρο 90 του Κώδικα νομοθεσίας για την Κυβέρνηση και τα κυβερνητικά όργανα (π.δ. 63/2005, Α' 98), το οποίο διατηρήθηκε σε ισχύ με την περ. 22 του άρθρου 119 του ν. 4622/2019 (Α' 133).
7. Το π.δ. 132/2017 «Οργανισμός Υπουργείου Περιβάλλοντος και Ενέργειας (ΥΠΕΝ)» (Α' 160).
8. Το π.δ. 77/2023 «Σύσταση Υπουργείου και μετονομασία Υπουργείων - Σύσταση, κατάργηση και μετονομασία Γενικών και Ειδικών Γραμματειών - Μεταφορά αρμοδιοτήτων, υπηρεσιακών μονάδων, θέσεων προσωπικού και εποπτευόμενων φορέων» (Α' 130), όπως ισχύει.
9. Το π.δ. 27/2025 «Διορισμός Υπουργών, Αναπληρωτή Υπουργού, Υφυπουργών και Αντιπροέδρου της Κυβέρνησης» (Α' 44).
10. Την υπ' αρ. 22306 κοινή υπουργική απόφαση «Χαρακτηρισμός των λιμνοθαλάσσιων, χερσαίων, ποτάμιων περιοχών του νοτίου τμήματος του Νομού Αιτωλοακαρνανίας και του νησιωτικού συμπλέγματος των Β. και Ν. Εχινάδων του Νομού Κεφαλληνίας ως Εθνικό Πάρκο με την ονομασία «Εθνικό Πάρκο Λιμνοθαλασσών Μεσολογγίου-Αιτωλικού, κάτω ρου και εκβολών ποταμών Αχελώου και Εύηνου και νήσων Εχινάδων» (Δ' 477/2006) και ιδίως την παρ. 3 του άρθρου 2 και τα σημεία Β (α) και (β) του άρθρου 3 αυτής.
11. Την Ειδική Περιβαλλοντική Μελέτη ΕΠΜ 5β: Εκπόνηση ΕΠΜ και ΣΔ για τις περιοχές Natura 2000 των Περιφερειών Δυτικής Ελλάδας και Ιονίων Νήσων (Ομάδα περιοχών Natura Περιφερειακών Ενοτήτων Αιτωλοακαρνανίας, Ηλείας, Αχαΐας), όπως έχει υποβληθεί στην ΔΔΦΠΒ/ΥΠΕΝ.
12. Την ανάγκη αποτελεσματικής προστασίας και ελέγχου επεμβάσεων και δραστηριοτήτων στο ποτάμιο σύστημα των τμημάτων του Αχελώου και του Εύηνου, σε συνάρτηση με την προώθηση της βιώσιμης ανάπτυξης στην παραποτάμια έκταση όπου παρουσιάζεται αλλοίωση λόγω των απολήψεων, ειδικά καθώς οι εκτάσεις δεν εμπίπτουν σε περιοχή του δικτύου NATURA 2000.
13. Την υπό στοιχεία ΥΠΕΝ/ΔΠΔΑ/32361/779/23.03.2026 Εισήγηση της ΓΔΟΥ του ΥΠΕΝ από την οποία προκύπτει ότι από τις διατάξεις της παρούσας απόφασης δεν προκαλείται δαπάνη σε βάρος του κρατικού προϋπολογισμού (ΥΠΕΝ/ΓΔΠΠ/32998/679/23.03.2026).



14. Το γεγονός ότι οι διατάξεις της παρούσας δεν αφορούν σε διοικητική διαδικασία για την οποία υπάρχει υποχρέωση δημοσίευσης στο ΕΜΔΔ - ΜΙΤΟΣ, αποφασίζει:

#### Άρθρο 1

##### Σκοπός

1. Χαρακτηρίζεται ως προστατευόμενο τοπίο και προστατευόμενος φυσικός σχηματισμός, το ποτάμιο σύστημα Αχελώου και Εύηνου της Περιφερειακής Ενότητας Αιτωλοακαρνανίας της Περιφέρειας Δυτικής Ελλάδας.

2. Στόχος της παρούσας απόφασης είναι η προστασία των υδάτινων και παρυδάτινων στοιχείων που έχουν οικολογική και περιβαλλοντική αξία, η ανάδειξη της ιδιαίτερης φυσιογνωμίας του ποτάμιου συστήματος τμημάτων του Αχελώου και του Εύηνου, η προστασία των υδατικών σωμάτων και των παραποτάμιων οικοσυστημάτων, με ουσιώδεις ανθρωπογενείς τροποποιήσεις τα οποία έχουν υποστεί σημαντικές υδρομορφολογικές αλλοιώσεις και δεν φέρουν πλέον τα χαρακτηριστικά φυσικής κοίτης και η ταυτόχρονη προώθηση της βιώσιμης ανάπτυξής τους, με τον χαρακτηρισμό τους ως προστατευόμενου τοπίου και προστατευόμενου φυσικού σχηματισμού και την θεσμοθέτηση ειδικών όρων και περιορισμών.

#### Άρθρο 2

##### Πεδίο εφαρμογής

Οι περιοχές που χαρακτηρίζονται, χωροθετούνται εντός των Δημοτικών Ενοτήτων Νεάπολης, Στράτου, Αग्रινίου, Αγγελοκάστρου, Αιτωλικού, Αστακού και Οινιάδων, των Δήμων Αग्रινίου, Ξηρομέρου και Ιεράς Πόλεως Μεσολογγίου (τμήμα π. Αχελώου) και εντός των Δημοτικών Ενοτήτων Πλατάνου, Θέρμου, Πυλλήνης, Ναύπακτου, Μακρύνειας, Χάλκειας και Ιεράς Πόλης Μεσολογγίου των Δήμων Ναυπακτίας, Θέρμου, Αग्रινίου και Ιεράς Πόλεως Μεσολογγίου (τμήμα π. Εύηνου) όπως τα όριά τους φαίνονται στο χάρτη, ο οποίος θεωρήθηκε από την Προϊσταμένη της Διεύθυνσης Τοπογραφικών Εφαρμογών, και αποτελεί αναπόσπαστο μέρος της παρούσας με τη συνεχή σκούρα και ανοιχτή κυανή γραμμή (πολύγωνα). Τα όρια των περιοχών προστασίας αναφέρονται στο συνημμένο Παράρτημα Ι, το οποίο αποτελεί αναπόσπαστο μέρος της παρούσας απόφασης και καθορίζονται ως εξής:

- α) Περιοχή Α1: Φυσική κοίτη και ευρύτερη περιοχή του ποταμού Αχελώου.
- β) Περιοχή Α2: Φυσική κοίτη και ευρύτερη περιοχή του ποταμού Εύηνου κατάντι του φράγματος.
- γ) Περιοχή Β1: Διευθετημένη κοίτη και ευρύτερη περιοχή του ποταμού Αχελώου κατάντι φράγματος Στράτου.

#### Άρθρο 3

##### Ειδικοί όροι και περιορισμοί

Οι επιτρεπόμενες χρήσεις γης καθώς και οι ειδικοί όροι και περιορισμοί στις δραστηριότητες που ασκούνται εντός των περιοχών του άρθρου 2, καθορίζονται σύμφωνα με τις παρ. 4 και 6 του άρθρου 19 του ν. 1650/1986 (Α' 160) και της παρ. 7 του άρθρου 21 του ίδιο νόμου αντιστοίχως.

#### Άρθρο 4

##### Παραρτήματα

Προσαρτώνται και αποτελούν αναπόσπαστο μέρος της παρούσας συνημμοσιευμένα στην Εφημερίδα της Κυβερνήσεως, το Παράρτημα Ι «Χάρτες» και το Παράρτημα ΙΙ «Πίνακας συντεταγμένων» των Περιοχών Α1, Α2, και Β1.

#### Άρθρο 5

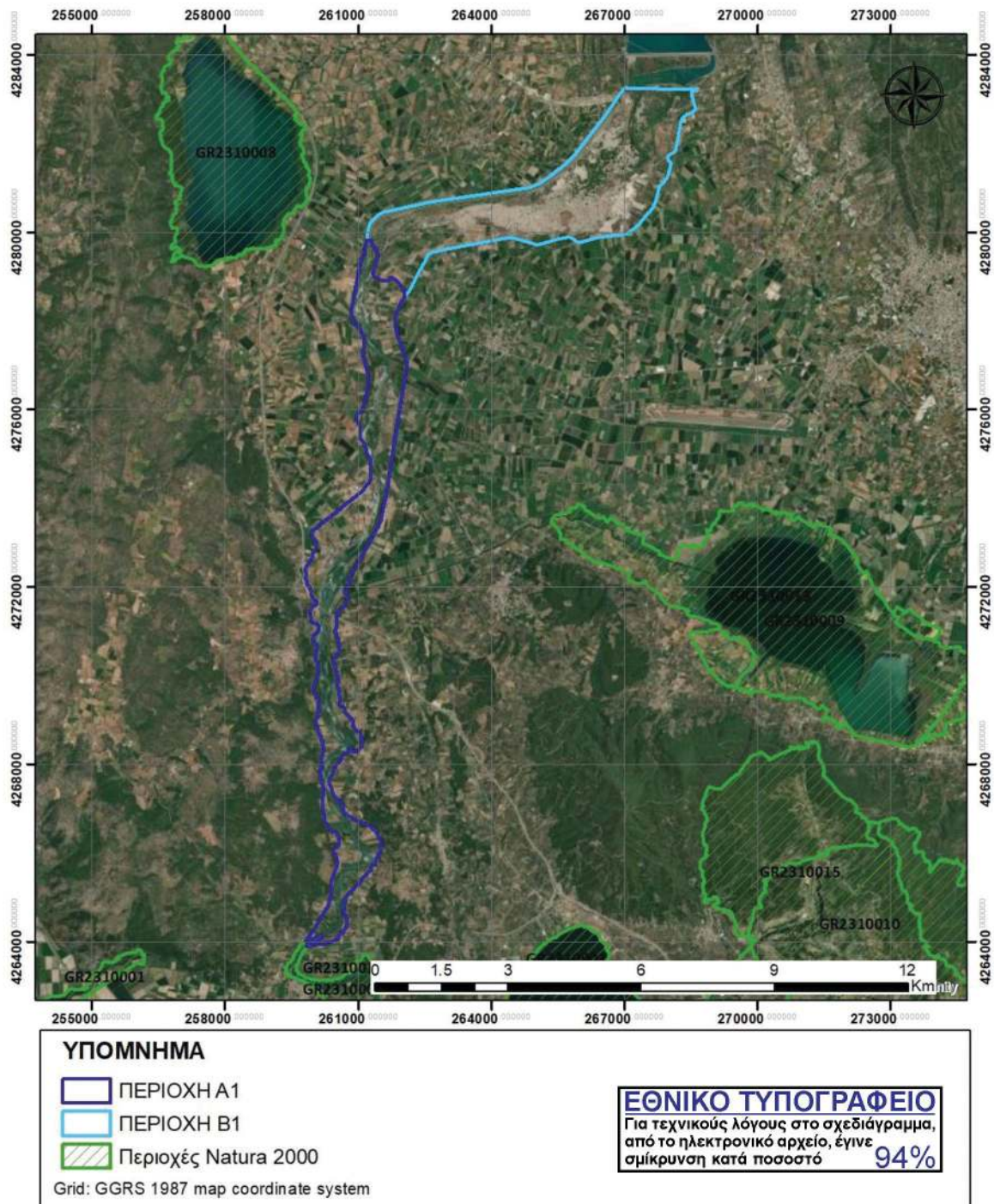
##### Έναρξη Ισχύος

Η ισχύς της παρούσας απόφασης αρχίζει από τη δημοσίευσή της στην Εφημερίδα της Κυβερνήσεως.

## ΠΑΡΑΡΤΗΜΑ Ι ΧΑΡΤΕΣ

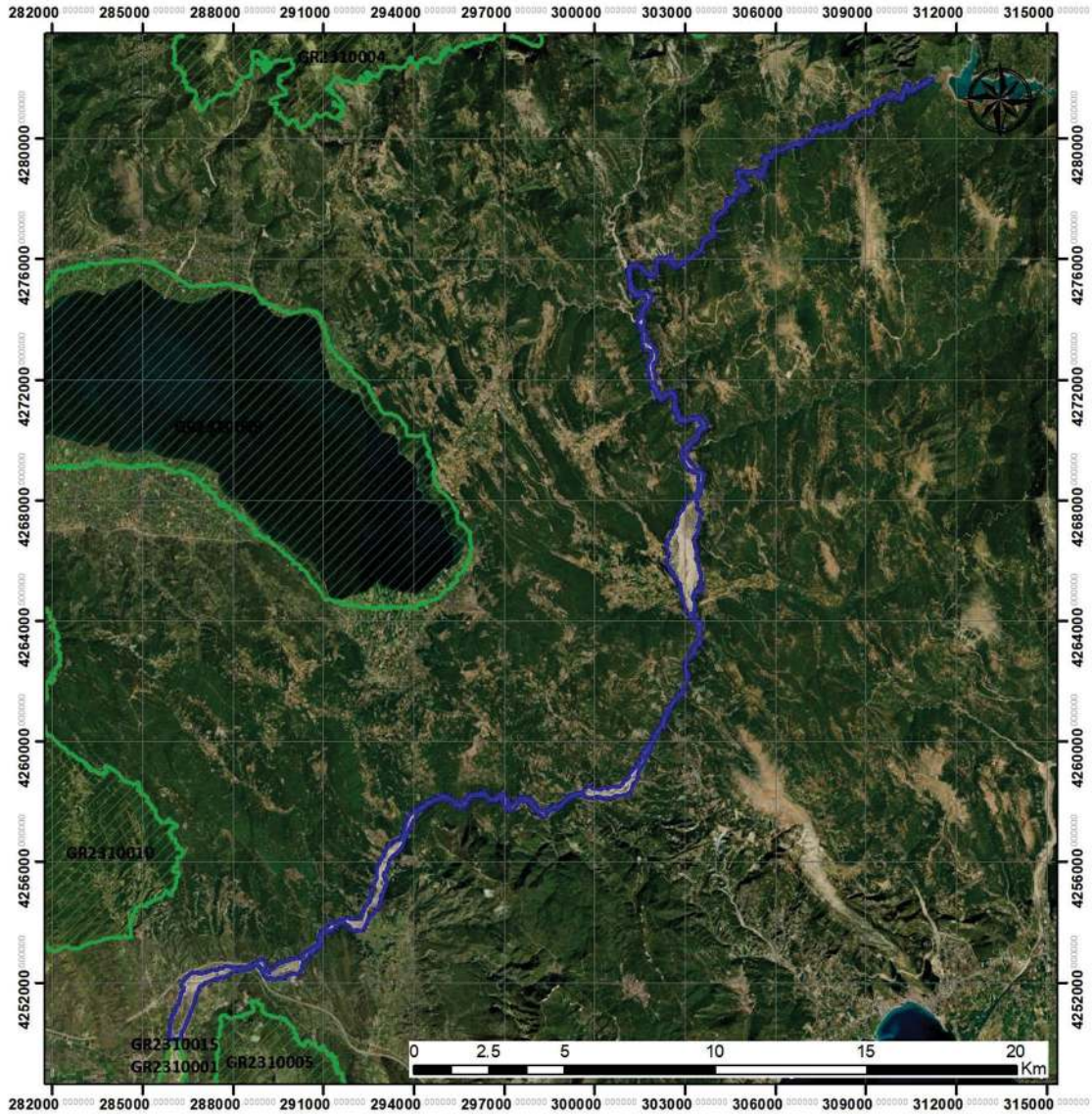
Περιοχή Α1: Φυσική κοίτη και ευρύτερη περιοχή του ποταμού Αχελώου

Περιοχή Β1: Διευθετημένη κοίτη και ευρύτερη περιοχή του ποταμού Αχελώου κατάντι φράγματος Στράτου





Περιοχή Α2: Φυσική κοίτη και ευρύτερη περιοχή του ποταμού Εύηνου κατάντι του φράγματος



<b>ΥΠΟΜΝΗΜΑ</b>		<b>ΕΘΝΙΚΟ ΤΥΠΟΓΡΑΦΕΙΟ</b> Για τεχνικούς λόγους στο σχεδιάγραμμα, από το ηλεκτρονικό αρχείο, έγινε σμίκρυνση κατά ποσοστό <b>94%</b>
	ΠΕΡΙΟΧΗ Α2	
	Περιοχές Natura 2000	
Grid: GGRS 1987 map coordinate system		

ΥΠΟΥΡΓΕΙΟ ΠΕΡΙΒΑΛΛΟΝΤΟΣ ΚΑΙ ΕΝΕΡΓΕΙΑΣ  
ΘΕΩΡΗΘΗΚΕ ΜΕ ΤΗΝ ΥΠ' ΑΡΙΘ. 33643/687/24-03-2026 ΠΡΑΞΗ

Η ΠΡΟΪΣΤΑΜΕΝΗ ΤΗΣ Δ/ΝΣΗΣ  
ΤΟΠΟΓΡΑΦΙΚΩΝ ΕΦΑΡΜΟΓΩΝ  
κ.α.α.  
ΕΛΕΝΗ ΚΑΟΥΝΗ  
ΤΟΠΟΓΡΑΦΟΣ ΜΗΧΑΝΙΚΟΣ  
ΕΛΕΝΗ ΚΑΟΥΝΙ  
26/03/2026 15:35



## ΠΑΡΑΡΤΗΜΑ ΙΙ

## Πίνακας Συντεταγμένων (σύστημα αναφοράς ΕΓΣΑ '87) - ΠΕΡΙΟΧΗ Α1

A/A	X	Y
1	261002.5006	4268738.772
2	261008.806	4268743.288
3	261049.5226	4268686.677
4	261067.3027	4268637.147
5	261066.6677	4268570.471
6	261086.9877	4268565.391
7	261103.1057	4268527.86
8	261103.4785	4268512.324
9	261098.3023	4268455.977
10	261100.39	4268447.288
11	261103.9814	4268432.342
12	261082.5115	4268406.959
13	261053.3301	4268373.079
14	261041.1768	4268361.412
15	261029.8407	4268352.994
16	261007.5659	4268324.815
17	260997.0701	4268299.771
18	260981.6126	4268285.013
19	260962.1861	4268274.61
20	260940.025	4268272.299
21	260909.5107	4268280.134
22	260911.4162	4268287.628
23	260843.7827	4268299.81
24	260812.1081	4268354.354
25	260792.0896	4268278.853
26	260753.2692	4268242.41
27	260711.8765	4268221.087
28	260681.7727	4268219.832
29	260646.6517	4268182.203
30	260629.0911	4268098.163
31	260615.2936	4268096.086
32	260562.3768	4268033.997
33	260549.6768	4268024.824
34	260524.9823	4267991.663
35	260511.5767	4267974.165
36	260496.0545	4267919.837
37	260470.4339	4267894.107
38	260456.1464	4267865.532
39	260447.0182	4267834.178
40	260429.9526	4267811.16
41	260414.8005	4267756.14
42	260414.1525	4267753.787
43	260411.6942	4267744.861
44	260406.2487	4267737.046
45	260402.2786	4267731.142
46	260382.3382	4267701.491
47	260366.5638	4267680.167
48	260358.0374	4267649.75
49	260354.367	4267627.044

A/A	X	Y
50	260348.1923	4267595.565
51	260356.4949	4267568.941
52	260363.2351	4267528.813
53	260371.4989	4267520.343
54	260381.864	4267504.194
55	260461.8763	4267293.91
56	260462.3228	4267284.869
57	260500.274	4267250.936
58	260535.0999	4267215.44
59	260553.8522	4267198.809
60	260573.9441	4267189.656
61	260585.3295	4267169.787
62	260590.5515	4267159.558
63	260615.244	4267142.328
64	260624.8434	4267134.068
65	260640.9488	4267083.468
66	260658.8783	4267054.857
67	260660.0799	4267023.361
68	260676.7328	4267001.95
69	260676.7473	4267001.927
70	260687.0661	4266971.765
71	260687.8598	4266929.696
72	260706.9098	4266895.565
73	260806.9225	4266817.777
74	260906.1416	4266766.977
75	260962.4978	4266730.464
76	261015.6792	4266705.858
77	261058.5418	4266678.871
78	261111.7231	4266667.758
79	261179.9858	4266637.992
80	261232.3734	4266622.911
81	261246.237	4266612.061
82	261250.6755	4266608.475
83	261288.5275	4266585.685
84	261316.2276	4266562.513
85	261341.8933	4266536.798
86	261346.0196	4266532.558
87	261352.4063	4266525.197
88	261353.2039	4266524.411
89	261354.4516	4266523.181
90	261367.7598	4266513.872
91	261391.9872	4266504.506
92	261395.0747	4266502.438
93	261398.0433	4266498.328
94	261400.6488	4266494.72
95	261410.9675	4266470.114
96	261440.0991	4266444.642
97	261449.8613	4266412.17
98	261454.6239	4266380.42



A/A	X	Y
99	261470.0346	4266358.847
100	261478.4365	4266331.207
101	261526.106	4266256.374
102	261530.824	4266208.969
103	261520.7906	4266157.627
104	261511.0247	4266121.833
105	261511.0247	4266027.773
106	261461.8122	4265976.576
107	261443.5558	4265910.695
108	261415.7745	4265887.756
109	261406.7675	4265826.721
110	261402.2147	4265798.391
111	261383.4696	4265757.046
112	261367.1605	4265723.583
113	261346.805	4265722.643
114	261334.6531	4265722.02
115	261321.1593	4265708.526
116	261320.9041	4265670.601
117	261317.2215	4265665.224
118	261300.5457	4265644.532
119	261290.2716	4265625.871
120	261289.5665	4265624.591
121	261271.3521	4265591.509
122	261214.7194	4265536.466
123	261183.8403	4265504.532
124	261134.3103	4265445.477
125	261097.877	4265405.472
126	261065.3332	4265381.66
127	261024.7726	4265328.796
128	260987.5455	4265277.519
129	260924.0455	4265200.525
130	260870.8642	4265142.582
131	260747.4357	4265029.869
132	260724.8363	4264997.675
133	260706.872	4264866.263
134	260700.7635	4264821.577
135	260685.0078	4264706.322
136	260684.5851	4264703.23
137	260679.8993	4264679.093
138	260678.2848	4264668.868
139	260680.8542	4264646.337
140	260683.3725	4264624.254
141	260688.6672	4264609.365
142	260696.8705	4264598.987
143	260712.3325	4264579.426
144	260728.5032	4264557.45
145	260735.4377	4264548.026
146	260739.7061	4264521.967
147	260748.9911	4264465.28
148	260750.4144	4264456.59
149	260748.1531	4264400.779

A/A	X	Y
150	260757.1183	4264397.966
151	260751.5714	4264357.17
152	260751.042	4264355.997
153	260744.0864	4264340.592
154	260738.4308	4264328.065
155	260737.8984	4264324.758
156	260732.4392	4264307.435
157	260731.4662	4264304.769
158	260729.0819	4264301.079
159	260714.1208	4264290.317
160	260713.1935	4264289.815
161	260710.4157	4264288.308
162	260709.4912	4264287.807
163	260702.6251	4264283.805
164	260695.7179	4264279.296
165	260687.9766	4264226.227
166	260678.8127	4264187.838
167	260668.8694	4264193.984
168	260642.4246	4264210.331
169	260624.1771	4264235.994
170	260623.351	4264235.046
171	260596.8619	4264164.61
172	260585.6765	4264140.842
173	260573.3496	4264115.865
174	260574.6513	4264100.74
175	260581.5951	4264074.629
176	260557.2848	4264065.95
177	260511.2868	4264049.527
178	260436.9355	4264014.85
179	260392.596	4263995.592
180	260378.1766	4263989.33
181	260320.2567	4263976.09
182	260236.7656	4263970.745
183	260240.876	4263955.134
184	260245.9771	4263935.76
185	260136.2451	4263927.232
186	259920.0089	4263928.378
187	259934.6138	4263869.413
188	259873.8811	4263880.562
189	259872.7441	4263880.771
190	259870.0369	4263886.21
191	259859.7716	4263889.281
192	259861.1323	4263895.57
193	259862.1761	4263900.396
194	259866.5831	4263908.56
195	259869.7729	4263914.469
196	259888.8384	4263928.398
197	259905.5181	4263940.584
198	259909.1112	4263936.242
199	259909.5019	4263936.487
200	259911.5875	4263937.79



A/A	X	Y
201	260012.0967	4264007.93
202	260013.8908	4264008.974
203	260017.2149	4264010.91
204	260047.2028	4264028.373
205	260072.206	4264034.299
206	260095.1719	4264051.153
207	260115.73	4264069.118
208	260135.6117	4264073.221
209	260139.0664	4264073.934
210	260139.9781	4264074.653
211	260148.6971	4264081.527
212	260171.2926	4264085.046
213	260171.7604	4264083.928
214	260174.6844	4264076.936
215	260187.134	4264082.8
216	260186.1739	4264086.64
217	260185.1833	4264090.603
218	260192.5916	4264096.9
219	260197.9627	4264103.938
220	260199.0739	4264112.272
221	260193.9951	4264119.106
222	260177.5897	4264113.383
223	260171.5845	4264117.733
224	260160.1801	4264110.605
225	260153.5822	4264112.887
226	260146.2895	4264105.975
227	260138.4186	4264108.804
228	260133.735	4264105.49
229	260128.139	4264101.53
230	260127.7579	4264101.332
231	260118.5082	4264096.529
232	260106.4508	4264100.198
233	260098.1352	4264093.566
234	260092.8347	4264096.532
235	260087.7636	4264090.603
236	260082.8253	4264093.837
237	260060.723	4264090.047
238	260055.1748	4264086.393
239	260047.9436	4264078.379
240	260045.3507	4264074.304
241	260039.7945	4264074.675
242	260034.6087	4264068.563
243	260022.7611	4264069.293
244	260018.7898	4264067.055
245	260015.7173	4264055.228
246	260001.6415	4264046.523
247	259987.5076	4264037.506
248	259983.7299	4264033.728
249	259978.8608	4264023.557
250	259965.5841	4264019.084

A/A	X	Y
251	259961.4512	4264012.259
252	259955.6352	4264011.055
253	259952.0055	4264003.555
254	259943.88	4264001.569
255	259939.5965	4263990.405
256	259927.044	4263987.982
257	259918.3585	4263980.972
258	259911.0745	4263970.217
259	259901.4637	4263963.883
260	259894.0352	4263953.548
261	259887.8737	4263954.926
262	259883.2411	4263951.418
263	259855.6761	4263987.606
264	259851.9928	4263992.442
265	259832.1755	4263994.85
266	259819.3924	4264007.069
267	259817.6065	4264008.776
268	259822.3222	4264014.185
269	259857.5445	4264054.584
270	259887.9176	4264097.103
271	259922.6836	4264138.571
272	259953.261	4264171.662
273	259982.1635	4264209.762
274	259987.7198	4264234.369
275	260141.6226	4264506.219
276	260141.6268	4264506.226
277	260164.6456	4264531.626
278	260264.9589	4264715.252
279	260298.7897	4264753.877
280	260349.3301	4264869.695
281	260357.7037	4264958.431
282	260404.535	4265058.444
283	260414.8539	4265085.431
284	260422.7913	4265160.044
285	260389.4134	4265273.867
286	260405.6464	4265375.627
287	260436.177	4265454.242
288	260469.1464	4265564.381
289	260539.8697	4265765.042
290	260549.7459	4265794.949
291	260537.2629	4265836.142
292	260532.4279	4265863.349
293	260513.3778	4265899.067
294	260504.6467	4265938.755
295	260456.2277	4266019.718
296	260451.4652	4266053.849
297	260460.1966	4266080.043
298	260469.7215	4266099.887
299	260473.6903	4266111.793
300	260487.4911	4266119.066



A/A	X	Y
301	260502.2654	4266118.937
302	260524.6762	4266132.926
303	260552.2717	4266143.543
304	260576.0842	4266161.799
305	260592.7531	4266236.412
306	260591.1655	4266260.224
307	260569.7342	4266297.531
308	260562.5904	4266308.405
309	260561.7967	4266387.78
310	260546.7154	4266404.449
311	260529.2529	4266417.943
312	260506.2342	4266452.868
313	260477.659	4266476.68
314	260448.2903	4266490.968
315	260410.9839	4266498.588
316	260375.2652	4266525.575
317	260343.515	4266547.801
318	260307.0024	4266635.907
319	260276.0462	4266679.563
320	260259.0495	4266733.066
321	260258.5204	4266805.562
322	260210.3661	4266933.621
323	260208.2494	4266957.169
324	260216.1869	4267034.956
325	260210.3661	4267109.04
326	260205.0744	4267127.825
327	260218.8328	4267288.163
328	260231.7221	4267336.878
329	260228.5471	4267448.532
330	260205.2637	4267496.951
331	260193.093	4267538.755
332	260185.1554	4267644.589
333	260154.4636	4267660.993
334	260136.1593	4267847.78
335	260191.6521	4267925.9
336	260194.4845	4267967.441
337	260185.0433	4268023.144
338	260170.8816	4268071.294
339	260168.9934	4268106.397
340	260177.6305	4268137.404
341	260195.0155	4268205.706
342	260208.7591	4268277.414
343	260226.3483	4268311.919
344	260225.8172	4268354.139
345	260220.5066	4268428.328
346	260205.1057	4268499.916
347	260184.3942	4268543.463
348	260170.5866	4268601.88
349	260164.7449	4268632.575
350	260148.2819	4268666.563

A/A	X	Y
351	260129.1636	4268691.948
352	260100.856	4268778.15
353	260099.424	4268815.58
354	260088.1057	4268851.481
355	260073.0948	4268914.325
356	260063.6152	4268979.019
357	260060.9965	4268993.143
358	260067.7179	4269032.463
359	260082.2806	4269049.266
360	260093.7067	4269097.345
361	260095.4991	4269165.835
362	260115.887	4269238.156
363	260126.6982	4269290.019
364	260128.8814	4269333.262
365	260122.8323	4269351.97
366	260117.4553	4269441.139
367	260113.4226	4269454.514
368	260080.0401	4269496.141
369	260067.9419	4269515.409
370	260060.6314	4269538.938
371	260059.2042	4269565.931
372	260055.3954	4269582.734
373	260043.7453	4269593.488
374	260021.5651	4269604.018
375	260017.0841	4269628.663
376	260001.684	4269652.667
377	260000.4795	4269663.289
378	259999.483	4269672.075
379	259997.7217	4269676.147
380	260002.4806	4269701.371
381	260007.6487	4269743.276
382	260008.6999	4269764.481
383	260008.6022	4269765.591
384	260010.7117	4269775.584
385	260032.5296	4269821.556
386	260051.2126	4269868.319
387	260063.2221	4269924.039
388	260063.5838	4269947.113
389	260063.1719	4269951.778
390	260069.5562	4269962.957
391	260077.4046	4269976.7
392	260084.5492	4270002.301
393	260099.4336	4270035.047
394	260100.0291	4270066.602
395	260116.1043	4270175.556
396	260117.295	4270192.822
397	260110.1504	4270206.932
398	260095.266	4270302.193
399	260045.8496	4270340.594
400	260037.5144	4270397.751



A/A	X	Y
401	260039.896	4270439.427
402	260052.9853	4270531.127
403	260062.5202	4270561.301
404	260077.4046	4270579.043
405	260084.5492	4270624.292
406	260078.5954	4270670.017
407	260060.7342	4270699.785
408	260010.127	4270755.096
409	259977.9766	4270833.686
410	259984.5258	4270856.905
411	259987.5768	4270883.869
412	260035.1328	4270938.175
413	260053.5895	4270944.128
414	260080.3815	4270970.325
415	260103.6012	4271019.146
416	260113.1273	4271125.421
417	260091.0983	4271156.38
418	260035.1329	4271183.768
419	259990.4796	4271185.375
420	259946.4216	4271241.936
421	259946.4216	4271286.589
422	259930.3464	4271335.41
423	259923.2248	4271436.164
424	259949.3055	4271517.709
425	259999.0638	4271575.04
426	260042.3319	4271597.756
427	260076.9465	4271642.863
428	260007.7174	4271721.827
429	259989.3284	4271732.644
430	259960.1224	4271806.2
431	259941.7335	4271932.543
432	259906.2654	4271997.764
433	259899.1538	4272005.714
434	259865.8896	4272042.9
435	259859.524	4272050.016
436	259858.12	4272058.531
437	259855.7854	4272063.228
438	259837.9299	4272136.173
439	259830.2047	4272191.093
440	259829.81	4272230.218
441	259829.7544	4272235.728
442	259833.1965	4272265.686
443	259834.9757	4272281.17
444	259827.3667	4272344.285
445	259818.9651	4272384.526
446	259818.0846	4272398.232
447	259822.2971	4272421.131
448	259836.5463	4272462.221
449	259876.6578	4272516.328
450	259880.3058	4272521.323

A/A	X	Y
451	259905.7166	4272556.117
452	259927.5901	4272594.177
453	259955.8841	4272652.755
454	259982.4643	4272695.74
455	259996.1574	4272711.903
456	259996.762	4272712.57
457	259997.4369	4272726.333
458	259997.4067	4272727.03
459	259995.3449	4272730.965
460	259984.2485	4272746.054
461	259998.1999	4272777.862
462	260038.2758	4272834.962
463	260049.9039	4272858.049
464	260056.3993	4272890.526
465	260068.2928	4272949.994
466	260059.6392	4272994.344
467	260055.2435	4273003.482
468	260052.3882	4273009.418
469	260052.0355	4273010.151
470	260013.1966	4273077.314
471	259987.2316	4273115.354
472	259965.2918	4273143.69
473	259964.6183	4273144.559
474	259964.4076	4273145.698
475	259960.0649	4273169.173
476	259960.2783	4273192.263
477	259949.1394	4273236.807
478	259950.3953	4273237.699
479	259950.9569	4273238.097
480	259990.5153	4273266.182
481	260032.8391	4273295.686
482	260531.2621	4273696.37
483	260547.6159	4273712.341
484	260563.4341	4273727.927
485	260564.1853	4273728.523
486	260798.5658	4273914.672
487	260972.9197	4274051.578
488	260988.7825	4274062.133
489	261041.1505	4274096.979
490	261104.43	4274158.737
491	261187.1804	4274275.561
492	261255.591	4274368.562
493	261283.1276	4274420.596
494	261299.0027	4274492.034
495	261300.3256	4274851.868
496	261201.1066	4275019.879
497	261193.1691	4275080.733
498	261139.7611	4275221.055
499	261136.9487	4275224.992
500	261098.9033	4275296.602



A/A	X	Y
501	261060.5523	4275346.231
502	261049.7489	4275388.122
503	261055.7106	4275432.513
504	261056.5371	4275439.714
505	261052.9397	4275449.166
506	261027.8042	4275646.281
507	261010.6063	4275682
508	260998.7	4275736.107
509	260952.3978	4275777.118
510	260985.4708	4275872.368
511	261026.4813	4275931.899
512	261094.4163	4275969.438
513	261124.3773	4276076.097
514	261144.2211	4276178.624
515	261219.6275	4276476.28
516	261246.0859	4276737.557
517	261123.0544	4277177.428
518	261124.3773	4277375.866
519	261144.2211	4277619.283
520	261071.4605	4277760.835
521	261003.9917	4277866.007
522	260882.2831	4278004.517
523	260871.6997	4278106.381
524	260865.0851	4278191.048
525	260859.7935	4278302.174
526	261039.7105	4279158.102
527	261094.3059	4279397.356
528	261111.1481	4279443.853
529	261140.3435	4279503.719
530	261156.1274	4279558.947
531	261154.8045	4279655.52
532	261200.5175	4279816.767
533	261313.9043	4279813.504
534	261317.9547	4279739.245
535	261377.3615	4279683.889
536	261409.7651	4279640.684
537	261455.6704	4279473.265
538	261420.5664	4279369.303
539	261361.1596	4279216.736
540	261353.0587	4279104.673
541	261357.1092	4279025.014
542	261398.9639	4278969.658
543	261451.6199	4278958.857
544	261533.9793	4278903.501
545	261592.0358	4278891.349
546	261643.3417	4278899.45
547	261679.7958	4278918.352
548	261706.7989	4278958.857
549	261733.8019	4278984.51
550	261779.7072	4278976.409

A/A	X	Y
551	261824.2622	4278956.157
552	261867.4671	4278903.501
553	261943.0757	4278819.791
554	261988.9809	4278783.337
555	262021.3846	4278721.23
556	262060.539	4278599.716
557	262062.6299	4278550.232
558	262036.5488	4278518.706
559	261957.968	4278387.738
560	261887.3242	4278216.685
561	261861.1304	4278099.21
562	261851.6054	4277931.728
563	261861.1304	4277851.163
564	261880.1804	4277762.262
565	261893.6742	4277680.903
566	262045.2808	4277264.977
567	262065.1245	4277216.161
568	262084.1745	4277124.086
569	262084.9682	4277093.924
570	262107.1933	4277064.792
571	262091.3184	4277001.293
572	262088.1434	4276983.83
573	262107.1934	4276981.449
574	261988.1307	4276260.722
575	261644.2018	4274131.093
576	261533.7104	4273577.87
577	261508.9427	4273492.593
578	261482.114	4273424.251
579	261474.8114	4273382.262
580	261450.9986	4273331.461
581	261430.7168	4273299.966
582	261239.8249	4272965.239
583	260806.5444	4272187.109
584	260789.6757	4272154.26
585	260795.0027	4272113.418
586	260821.6385	4272053.93
587	260816.3111	4272037.948
588	260746.1692	4271973.577
589	260713.318	4271962.922
590	260692.0102	4271934.512
591	260784.5394	4271758.501
592	260756.9064	4271729.257
593	260743.4126	4271692.745
594	260711.6625	4271641.151
595	260691.025	4271576.063
596	260676.7375	4271544.313
597	260642.6061	4271524.469
598	260610.0624	4271503.832
599	260584.6623	4271475.256
600	260566.7177	4271443.283



A/A	X	Y
601	260533.0685	4271396.278
602	260514.8122	4271334.366
603	260529.8935	4271230.384
604	260538.6247	4271158.947
605	260532.2747	4271110.925
606	260514.8122	4271068.856
607	260493.3808	4271032.343
608	260489.4121	4270999.006
609	260507.6684	4270932.331
610	260528.306	4270883.991
611	260550.531	4270838.747
612	260572.756	4270760.166
613	260572.762	4270760.101
614	260582.3216	4270619.713
615	260564.0261	4270549.269
616	260564.8199	4270525.535
617	260556.8824	4270497.754
618	260540.2136	4270468.385
619	260506.0823	4270440.763
620	260461.6322	4270362.181
621	260452.9009	4270328.05
622	260457.4074	4270296.422
623	260489.4135	4270217.877
624	260533.8636	4269992.69
625	260566.6676	4269888.24
626	260566.6711	4269888.223
627	260542.5934	4269862.988
628	260536.2434	4269839.97
629	260552.1186	4269732.019
630	260570.3747	4269666.535
631	260602.1248	4269411.741
632	260614.038	4269305.151
633	260624.6212	4269296.684
634	260652.1379	4269296.684
635	260667.4838	4269290.863
636	260678.5963	4269277.105
637	260690.7672	4269219.426
638	260712.7316	4269169.007
639	260747.9174	4269128.673
640	260793.9549	4269090.044
641	260846.8717	4269042.419
642	260875.9759	4268977.966
643	260894.9818	4268892.999
644	260899.4697	4268870.821
645	260900.0079	4268868.515
646	260903.2623	4268854.573
647	260913.1067	4268825.895
648	260938.3971	4268787.012
649	260959.9571	4268760.741
650	260960.6118	4268759.498

A/A	X	Y
651	260973.0934	4268749.513
652	260988.09	4268746.762
653	260989.047	4268746.231
654	261002.5006	4268738.772



## Πίνακας Συντεταγμένων (σύστημα αναφοράς ΕΓΣΑ '87) - ΠΕΡΙΟΧΗ Β1

ΑΑ	X	Y
1	266738.6283	4279913.577
2	266423.7142	4279879.066
3	266219.8828	4279825.681
4	266010.1199	4279767.444
5	265979.3834	4279763.13
6	265963.2063	4279770.679
7	265942.1761	4279793.867
8	265920.6066	4279812.201
9	265853.2021	4279845.633
10	265826.3159	4279865.385
11	265750.5123	4279893.167
12	265701.2998	4279888.404
13	265508.8151	4279842.763
14	265059.1551	4279704.65
15	264532.8976	4279865.782
16	264446.7754	4279873.719
17	264335.2533	4279864.988
18	263723.6678	4279753.069
19	262917.1321	4279599.098
20	262777.5158	4279570.903
21	262680.6781	4279539.947
22	262624.3219	4279507.403
23	262567.1717	4279447.872
24	262515.578	4279363.734
25	262381.0252	4279104.435
26	262145.2931	4278650.152
27	262062.6299	4278550.232
28	262060.539	4278599.716
29	262021.3846	4278721.23
30	261988.9809	4278783.337
31	261943.0757	4278819.791
32	261867.4671	4278903.501
33	261824.2622	4278956.157
34	261779.7072	4278976.409
35	261733.8019	4278984.51
36	261706.7989	4278958.857
37	261679.7958	4278918.352
38	261643.3417	4278899.45
39	261592.0358	4278891.349
40	261533.9793	4278903.501
41	261451.6199	4278958.857
42	261398.9639	4278969.658
43	261357.1092	4279025.014
44	261353.0587	4279104.673
45	261361.1596	4279216.736
46	261420.5664	4279369.303
47	261455.6704	4279473.265
48	261409.7651	4279640.684
49	261377.3615	4279683.889
50	261317.9547	4279739.245

ΑΑ	X	Y
51	261313.9043	4279813.504
52	261200.5175	4279816.767
53	261213.3687	4279862.098
54	261217.3374	4279999.02
55	261237.975	4280093.477
56	261284.8063	4280200.236
57	261364.1815	4280308.98
58	261474.5129	4280397.087
59	261587.2257	4280449.474
60	261705.8004	4280475.333
61	262628.6278	4280677.678
62	262871.5157	4280715.778
63	264808.2696	4280995.575
64	264901.1385	4281017.8
65	264979.72	4281045.582
66	265115.6249	4281110.996
67	265302.3314	4281237.516
68	265654.8894	4281513.345
69	265847.6717	4281688.235
70	265980.989	4281871.195
71	266564.5287	4282620.232
72	267004.4808	4283226.367
73	267033.0559	4283253.354
74	267073.5372	4283260.498
75	268476.4932	4283215.334
76	268632.8622	4283209.777
77	268639.57	4283205.369
78	268628.1	4283192.236
79	268611.4313	4283179.616
80	268546.8215	4283176.953
81	268527.2937	4283167.709
82	268515.3883	4283151.756
83	268517.7693	4283096.194
84	268619.3687	4282784.487
85	268596.9842	4282757.167
86	268559.0439	4282722.573
87	268545.952	4282697.29
88	268475.6998	4282670.98
89	268418.5496	4282649.548
90	268368.5433	4282622.56
91	268324.8873	4282582.873
92	268297.1064	4282523.502
93	268278.8501	4282463.574
94	268172.0308	4281850.039
95	268143.3559	4281824.602
96	267994.9245	4281719.827
97	267976.4837	4281707.05
98	267985.8822	4281649.379
99	267992.8923	4281626.192
100	268005.834	4281611.093



ΑΑ	X	Y
101	268024.7073	4281596.534
102	268058.1399	4281563.101
103	268065.6892	4281537.757
104	268065.15	4281512.952
105	268045.7375	4281464.96
106	268045.7375	4281453.097
107	267996.667	4281302.111
108	267980.4899	4281248.726
109	267929.2624	4281165.684
110	267901.7614	4281124.702
111	267859.1617	4281090.191
112	267832.7391	4281066.465
113	267821.9544	4281047.591
114	267781.5116	4280935.969
115	267756.1675	4280866.947
116	267723.8133	4280713.804
117	267674.7428	4280568.21
118	267650.4772	4280533.16
119	267612.1914	4280493.256
120	267566.8955	4280438.254
121	267559.8854	4280431.783
122	267539.9337	4280426.93
123	267529.149	4280415.067
124	267526.4528	4280408.057
125	267518.9035	4280398.351
126	267419.1447	4280274.865
127	267373.3096	4280223.099
128	267379.7805	4280217.167
129	267244.4321	4280094.76
130	267187.273	4280047.308
131	267150.605	4280010.64
132	267109.0838	4279986.374
133	267054.0816	4279958.334
134	267018.492	4279946.47
135	266820.5923	4279924.362
136	266738.6283	4279913.577



## Πίνακας Συντεταγμένων (σύστημα αναφοράς ΕΓΣΑ '87) - ΠΕΡΙΟΧΗ Α2

ΑΑ	X	Y
1	286685.1143	4252329.787
2	286689.4411	4252325.781
3	286705.4019	4252301.451
4	286717.5456	4252304.629
5	286723.3931	4252306.091
6	286781.2669	4252319.762
7	286826.8369	4252327.964
8	286838.4222	4252322.884
9	286843.3393	4252303.859
10	286846.0955	4252293.814
11	286847.2493	4252289.609
12	286851.9993	4252285.279
13	286873.1593	4252293.009
14	286888.4893	4252297.339
15	286908.2493	4252299.059
16	286914.1309	4252298.87
17	286925.3593	4252298.509
18	286949.0393	4252294.029
19	286962.1994	4252291.549
20	286973.2293	4252291.489
21	286976.3267	4252292.122
22	286979.5505	4252293.213
23	286986.7199	4252295.641
24	286992.4436	4252297.579
25	287003.2472	4252299.003
26	287032.2977	4252306.327
27	287042.881	4252314.371
28	287051.771	4252322.837
29	287061.9311	4252327.494
30	287081.8278	4252324.531
31	287098.1633	4252331.837
32	287154.3475	4252348.857
33	287167.7446	4252355.881
34	287197.9815	4252368.632
35	287224.5753	4252372.639
36	287255.9051	4252383.932
37	287285.7777	4252393.04
38	287295.0701	4252398.34
39	287318.6755	4252403.148
40	287403.607	4252411.085
41	287457.5821	4252415.054
42	287517.9072	4252440.454
43	287522.5751	4252441.837
44	287532.341	4252446.33
45	287539.8339	4252447.63
46	287565.4733	4252452.079
47	287569.5076	4252452.601
48	287588.8759	4252455.106
49	287623.2687	4252467.18
50	287639.3566	4252473.048

ΑΑ	X	Y
51	287681.0868	4252504.555
52	287696.1687	4252520.304
53	287702.0193	4252522.819
54	287711.8993	4252526.979
55	287712.5151	4252527.214
56	287729.0651	4252530.791
57	287762.0349	4252528.49
58	287793.7914	4252528.333
59	287822.1672	4252528.695
60	287829.1876	4252528.785
61	287850.2894	4252529.627
62	287857.7783	4252532.181
63	287859.6087	4252532.805
64	287885.4496	4252532.034
65	287933.8448	4252506.868
66	287978.5507	4252483.198
67	288006.6388	4252477.118
68	288054.78	4252477.973
69	288086.5236	4252476.783
70	288141.3544	4252483.195
71	288177.1825	4252485.175
72	288196.6252	4252485.161
73	288205.6149	4252483.253
74	288233.9549	4252477.235
75	288243.1578	4252475.007
76	288278.6118	4252466.756
77	288313.8673	4252465.719
78	288337.7165	4252469.348
79	288365.5625	4252478.65
80	288384.1189	4252481.791
81	288428.1256	4252502.198
82	288462.3426	4252515.423
83	288496.1683	4252527.121
84	288538.2095	4252541.434
85	288562.36	4252551.978
86	288578.5289	4252557.152
87	288604.7359	4252576.305
88	288615.8647	4252585.493
89	288659.7758	4252606.067
90	288700.6959	4252630.86
91	288729.0214	4252649.508
92	288777.7188	4252667.142
93	288827.0575	4252687.678
94	288829.852	4252695.939
95	288824.9446	4252712.531
96	288832.2306	4252734.024
97	288879.7418	4252764.525
98	288963.6577	4252759.092
99	289024.3869	4252737.169
100	289069.4123	4252699.611



ΑΑ	X	Y
101	289085.7563	4252677.644
102	289088.9225	4252639.542
103	289087.0911	4252614.829
104	289083.1536	4252578.884
105	289081.9801	4252569.965
106	289074.704	4252498.527
107	289069.1208	4252489.808
108	289063.5582	4252464.426
109	289066.3109	4252448.345
110	289083.6253	4252415.749
111	289098.5729	4252379.378
112	289113.4065	4252361.685
113	289128.7972	4252346.399
114	289150.8806	4252330.838
115	289169.6908	4252319.562
116	289182.4827	4252319.589
117	289182.488	4252319.505
118	289199.3946	4252319.505
119	289198.7647	4252317.915
120	289203.1674	4252319.505
121	289205.2314	4252322.652
122	289209.6382	4252338.69
123	289217.221	4252366.288
124	289233.4128	4252414.542
125	289259.0285	4252432.443
126	289261.103	4252433.758
127	289276.627	4252446.913
128	289277.172	4252447.391
129	289278.4635	4252447.746
130	289279.4827	4252447.861
131	289296.8651	4252458.063
132	289298.1734	4252458.503
133	289299.484	4252458.941
134	289316.0213	4252469.945
135	289316.6348	4252470.787
136	289323.0529	4252478.987
137	289335.0389	4252482.481
138	289336.2028	4252483.308
139	289351.345	4252490.799
140	289351.6107	4252490.78
141	289353.0757	4252491.637
142	289354.6367	4252493.134
143	289373.9314	4252505.192
144	289395.3092	4252528.837
145	289412.8841	4252540.259
146	289427.7005	4252549.556
147	289428.6657	4252550.164
148	289443.2099	4252565.825
149	289449.8813	4252577.5
150	289476.0093	4252611.469

ΑΑ	X	Y
151	289496.8094	4252620.459
152	289523.4094	4252625.369
153	289553.3894	4252632.189
154	289590.4693	4252643.079
155	289614.1893	4252653.159
156	289630.7574	4252663.402
157	289641.8182	4252669.453
158	289641.8327	4252669.461
159	289660.6035	4252679.027
160	289691.0052	4252696.945
161	289698.3	4252701.19
162	289719.3123	4252710.1
163	289736.8127	4252710.684
164	289770.9913	4252712.592
165	289774.5473	4252713.454
166	289795.8367	4252713.981
167	289814.4401	4252716.445
168	289825.576	4252718.849
169	289827.8309	4252719.336
170	289838.2493	4252727.549
171	289848.3093	4252730.429
172	289850.4818	4252730.709
173	289883.0077	4252747.236
174	289898.8991	4252749.334
175	289916.2433	4252758.353
176	289916.2673	4252758.366
177	289922.8673	4252767.05
178	289924.2567	4252780.249
179	289924.5694	4252792.105
180	289934.0342	4252790.753
181	290009.3064	4252780
182	290084.1027	4252800.183
183	290098.2065	4252803.989
184	290157.4733	4252805.4
185	290233.4108	4252785.332
186	290310.2937	4252808.351
187	290323.7111	4252810.458
188	290327.5473	4252842.08
189	290336.2314	4252911.206
190	290344.9155	4252931.701
191	290357.4206	4252952.195
192	290382.4309	4252978.595
193	290403.6201	4253002.91
194	290416.4726	4253016.11
195	290452.1693	4253034.489
196	290507.4822	4253056.057
197	290564.4501	4253072.383
198	290605.7865	4253090.099
199	290634.6177	4253109.551
200	290672.8279	4253149.151



AA	X	Y
201	290706.5223	4253180.761
202	290766.9637	4253224.876
203	290780.8583	4253239.466
204	290812.8159	4253295.739
205	290838.987	4253351.766
206	290846.2148	4253370.064
207	290864.0241	4253415.15
208	290867.1039	4253422.947
209	290871.924	4253444.039
210	290878.9979	4253524.996
211	290889.5528	4253594.436
212	290890.7319	4253602.194
213	290897.9979	4253649.996
214	290950.9979	4253718.996
215	291050.9979	4253757.996
216	291084.515	4253786.725
217	291109.9245	4253825.829
218	291138.5725	4253865.495
219	291177.5496	4253904.256
220	291215.8494	4253935.916
221	291237.9261	4253952.057
222	291257.9556	4253961.463
223	291289.5522	4253961.614
224	291315.7837	4253957.706
225	291360.3093	4253966.789
226	291366.5493	4253970.079
227	291419.0393	4253984.509
228	291419.4693	4253984.629
229	291432.9958	4253986.852
230	291446.9354	4253991.265
231	291447.8442	4253991.544
232	291529.9979	4254025.996
233	291561.0645	4254037.115
234	291614.5501	4254064.163
235	291652.2533	4254071.439
236	291688.9643	4254099.551
237	291738.9255	4254133.985
238	291791.3188	4254142.916
239	291827.0376	4254138.947
240	291858.1317	4254124.978
241	291872.6784	4254118.442
242	291904.1556	4254111.034
243	291904.5484	4254111.648
244	291987.9013	4254125.54
245	292059.5528	4254113.186
246	292108.5674	4254104.735
247	292128.0253	4254101.381
248	292131.2444	4254100.826
249	292152.386	4254098.431
250	292239.1837	4254115.994

AA	X	Y
251	292243.7944	4254116.927
252	292296.5845	4254178.052
253	292323.9407	4254300.708
254	292377.4509	4254422.425
255	292380.6794	4254447.849
256	292389.5692	4254491.706
257	292390.6347	4254496.848
258	292390.6743	4254497.038
259	292399.7838	4254520.145
260	292416.1645	4254545.147
261	292421.2639	4254552.999
262	292468.5696	4254581.574
263	292481.5293	4254592.319
264	292492.1293	4254602.619
265	292518.0194	4254637.109
266	292518.3548	4254637.53
267	292536.4784	4254657.361
268	292547.7093	4254665.359
269	292560.6678	4254703.627
270	292571.1797	4254726.324
271	292570.7654	4254730.923
272	292568.6887	4254753.974
273	292567.967	4254761.985
274	292564.5652	4254799.746
275	292556.6276	4254836.787
276	292556.6276	4254852.001
277	292580.4402	4254909.548
278	292604.9142	4254951.881
279	292610.2059	4254977.678
280	292608.8829	4255008.105
281	292614.1746	4255061.684
282	292624.758	4255098.725
283	292624.758	4255123.199
284	292621.4507	4255149.658
285	292660.2208	4255175.504
286	292668.6875	4255204.079
287	292705.7293	4255296.154
288	292723.721	4255371.296
289	292729.3157	4255395.633
290	292754.9979	4255405.996
291	292763.5478	4255412.714
292	292782.9979	4255427.996
293	292791.6086	4255489.993
294	292792.9979	4255499.996
295	292793.8363	4255510.162
296	292794.315	4255518.631
297	292796.0419	4255536.904
298	292768.2947	4255610.034
299	292771.055	4255683.192
300	292802.0292	4255793.258



ΑΑ	X	Y
301	292823.8573	4255877.925
302	292845.024	4255926.873
303	292888.4343	4256023.02
304	292907.9129	4256063.109
305	292920.3433	4256088.693
306	292922.285	4256092.689
307	292930.7226	4256110.054
308	292942.0681	4256126.595
309	292956.8526	4256148.149
310	292985.0808	4256189.303
311	293018.9979	4256277.996
312	293030.5946	4256304.879
313	293042.2171	4256330.761
314	293081.8044	4256418.361
315	293112.9979	4256481.996
316	293167.8164	4256520.864
317	293217.4258	4256542.03
318	293265.7124	4256586.348
319	293310.0302	4256630.666
320	293387.421	4256696.812
321	293414.7105	4256706.107
322	293431.9979	4256711.996
323	293464.5558	4256710.09
324	293492.0725	4256713.265
325	293517.4726	4256722.79
326	293538.6393	4256736.549
327	293558.7476	4256755.599
328	293570.3893	4256773.59
329	293587.3227	4256775.707
330	293615.8978	4256791.582
331	293637.0645	4256823.332
332	293651.8812	4256861.432
333	293658.2312	4256888.949
334	293650.553	4256921.682
335	293650.6819	4256921.708
336	293660.407	4256943.86
337	293676.4549	4256973.005
338	293681.1566	4257008.389
339	293667.4941	4257026.581
340	293660.518	4257035.87
341	293669.2028	4257054
342	293679.5026	4257070.41
343	293688.2321	4257083.226
344	293692.9441	4257104.578
345	293699.6356	4257126.346
346	293710.0662	4257152.366
347	293727.5247	4257179.812
348	293740.6759	4257201.533
349	293746.8794	4257218.7
350	293751.8246	4257235.633

ΑΑ	X	Y
351	293750.5623	4257241.855
352	293745.9979	4257262.996
353	293751.1857	4257283.522
354	293750.5623	4257315.277
355	293754.5311	4257342.397
356	293762.4686	4257362.24
357	293768.4217	4257391.345
358	293783.6353	4257414.496
359	293809.0332	4257433.196
360	293834.5677	4257483.287
361	293870.948	4257530.913
362	293921.5688	4257625.557
363	293923.9979	4257630.996
364	293948.7127	4257657.519
365	293964.9979	4257674.996
366	293987.1707	4257686.082
367	294030.5625	4257707.778
368	294058.9979	4257721.996
369	294108.3085	4257755.266
370	294156.2567	4257786.175
371	294194.8299	4257808.301
372	294242.0268	4257819.309
373	294287.0061	4257845.106
374	294364.1321	4257905.415
375	294374.5142	4257912.83
376	294443.1545	4257961.859
377	294659.6194	4258074.607
378	294758.8482	4258123.166
379	294821.9638	4258149.791
380	294967.4599	4258212.585
381	295017.6941	4258216.037
382	295090.8439	4258204.881
383	295114.5979	4258199.558
384	295125.0132	4258195.908
385	295140.8785	4258190.348
386	295161.0975	4258174.609
387	295194.3956	4258140.884
388	295198.1938	4258136.657
389	295206.2922	4258127.645
390	295239.8954	4258090.25
391	295297.7064	4258049.668
392	295337.3662	4258021.828
393	295353.0408	4258010.825
394	295401.0186	4257961.436
395	295439.6402	4257943.611
396	295456.0521	4257936.036
397	295499.1141	4257935.12
398	295522.3744	4257934.625
399	295572.2653	4257951.213
400	295626.2906	4257981.662



AA	X	Y
401	295682.8595	4258026.04
402	295726.7083	4258071.363
403	295767.8594	4258123.504
404	295793.2037	4258175.844
405	295808.8306	4258198.503
406	295831.5766	4258217.293
407	295841.2862	4258225.314
408	295871.3537	4258237.529
409	295875.9099	4258239.38
410	295879.5436	4258240.856
411	295886.4418	4258243.659
412	295987.8872	4258240.62
413	296089.895	4258218.775
414	296137.1805	4258230.564
415	296195.514	4258264.809
416	296203.8188	4258269.685
417	296222.5308	4258280.67
418	296231.5891	4258284.585
419	296259.495	4258296.646
420	296289.8259	4258309.755
421	296292.279	4258310.018
422	296321.0002	4258313.101
423	296327.4079	4258313.789
424	296350.6044	4258316.279
425	296359.1657	4258317.198
426	296379.4684	4258298.184
427	296385.2182	4258292.8
428	296391.8016	4258287.414
429	296393.625	4258284.679
430	296397.0593	4258281.419
431	296399.7205	4258275.536
432	296445.7767	4258206.451
433	296470.3826	4258162.227
434	296475.1455	4258153.667
435	296500.8703	4258122.963
436	296524.3581	4258094.929
437	296553.4043	4258074.897
438	296556.7378	4258072.598
439	296568.8713	4258064.23
440	296574.0811	4258062.258
441	296605.5232	4258054.397
442	296613.2583	4258052.463
443	296640.4652	4258063.666
444	296664.3259	4258073.491
445	296680.7272	4258080.245
446	296690.456	4258089.289
447	296694.6911	4258093.226
448	296721.5277	4258118.175
449	296724.5357	4258120.971
450	296787.8578	4258179.838

AA	X	Y
451	296904.7162	4258258.266
452	296952.6665	4258256.696
453	296997.1166	4258235.264
454	297002.8505	4258229.631
455	297042.3604	4258190.814
456	297110.623	4258143.983
457	297150.5899	4258093.116
458	297153.6429	4258079.586
459	297146.5087	4257980.556
460	297145.9235	4257972.433
461	297144.2781	4257949.593
462	297146.8953	4257942.901
463	297150.574	4257933.495
464	297151.7131	4257930.582
465	297174.8953	4257871.305
466	297174.9498	4257871.231
467	297182.9299	4257860.394
468	297192.2579	4257852.115
469	297192.516	4257851.973
470	297193.2244	4257851.812
471	297194.4506	4257851.366
472	297202.0701	4257850.654
473	297202.8618	4257850.688
474	297203.193	4257850.74
475	297203.8568	4257850.846
476	297208.8191	4257851.848
477	297210.0537	4257851.142
478	297211.9294	4257852.476
479	297265.0871	4257890.3
480	297273.2029	4257897.566
481	297347.0804	4257976.485
482	297428.4135	4258036.516
483	297431.5095	4258039.287
484	297442.8597	4258049.448
485	297506.096	4258089.196
486	297583.8881	4258138.094
487	297595.6772	4258144.361
488	297667.1733	4258150.055
489	297695.3164	4258152.296
490	297713.1863	4258153.72
491	297808.8599	4258129.378
492	297834.6441	4258108.811
493	297842.7064	4258102.38
494	297863.2583	4258085.986
495	297953.2168	4257973.803
496	297959.7605	4257965.078
497	297980.298	4257937.694
498	297991.3169	4257923.003
499	298041.8949	4257834.023
500	298052.2986	4257824.45



ΑΑ	X	Y
501	298063.5165	4257814.127
502	298125.4565	4257757.132
503	298136.788	4257751.342
504	298219.4042	4257715.758
505	298266.6568	4257707.646
506	298306.6964	4257687.678
507	298386.252	4257721.3
508	298481.8791	4257771.535
509	298532.1626	4257793.674
510	298570.8501	4257817.076
511	298609.7844	4257840.629
512	298633.1162	4257841.782
513	298685.1653	4257836.007
514	298734.9774	4257845.681
515	298779.0369	4257861.804
516	298779.2394	4257861.878
517	298835.9781	4257882.64
518	298866.0745	4257890.578
519	298900.929	4257911.437
520	298927.6331	4257936.517
521	299044.6173	4258079.724
522	299063.3228	4258101.852
523	299084.6591	4258127.094
524	299139.0272	4258166.013
525	299156.8292	4258178.756
526	299168.834	4258187.35
527	299198.7681	4258208.778
528	299200.5806	4258210.076
529	299201.2019	4258210.521
530	299229.9156	4258231.075
531	299384.933	4258278.392
532	299452.6315	4258282.523
533	299457.0904	4258282.796
534	299480.3471	4258282.422
535	299494.1487	4258285.057
536	299501.3452	4258286.432
537	299519.1099	4258293.092
538	299533.8417	4258291.744
539	299537.6069	4258289.766
540	299541.9565	4258287.975
541	299556.0847	4258282.16
542	299568.4876	4258281.659
543	299574.9916	4258283.248
544	299591.7068	4258287.332
545	299601.4397	4258291.606
546	299607.5506	4258294.289
547	299613.1698	4258296.477
548	299620.0947	4258299.173
549	299624.8119	4258313.81
550	299628.1347	4258319.332

ΑΑ	X	Y
551	299629.5834	4258321.74
552	299641.6432	4258341.78
553	299652.6561	4258372.005
554	299662.3155	4258381.085
555	299673.9721	4258388.393
556	299702.5171	4258414.906
557	299707.2644	4258425.955
558	299711.2127	4258438.188
559	299711.5293	4258439.169
560	299724.6693	4258463.319
561	299738.1993	4258474.499
562	299747.8493	4258479.559
563	299765.4022	4258481.072
564	299773.2493	4258481.749
565	299793.7393	4258481.199
566	299802.8352	4258481.615
567	299805.7493	4258481.749
568	299806.7203	4258482.185
569	299822.1393	4258489.119
570	299832.5193	4258489.119
571	299846.2826	4258484.555
572	299886.0806	4258471.36
573	299905.0569	4258465.068
574	299962.5725	4258422.114
575	299972.8759	4258421.437
576	299975.0093	4258420.019
577	300029.7282	4258417.248
578	300048.09	4258416.319
579	300048.3165	4258416.711
580	300074.4869	4258420.992
581	300088.4764	4258423.246
582	300107.3116	4258418.209
583	300131.9521	4258408.361
584	300147.5133	4258403.023
585	300152.7627	4258400.116
586	300159.5392	4258397.349
587	300171.2829	4258394.834
588	300185.3662	4258391.381
589	300198.3734	4258393.459
590	300224.7875	4258412.02
591	300262.6272	4258424.82
592	300262.6912	4258424.888
593	300267.5093	4258430.009
594	300272.4193	4258438.589
595	300278.4118	4258442.582
596	300281.4381	4258447.009
597	300295.9506	4258451.212
598	300304.6893	4258456.139
599	300316.1193	4258460.229
600	300316.55	4258460.229



AA	X	Y
601	300353.4802	4258452.407
602	300379.1056	4258446.979
603	300436.8671	4258434.745
604	300478.8789	4258447.87
605	300535.767	4258478.735
606	300639.4838	4258487.201
607	300731.4277	4258489.462
608	300786.2919	4258491.624
609	300869.1426	4258526.36
610	300944.2845	4258632.193
611	301019.4263	4258681.935
612	301041.0117	4258705.928
613	301064.5893	4258713.269
614	301081.5171	4258724.739
615	301085.5974	4258727.443
616	301101.7839	4258739.206
617	301147.3135	4258792.445
618	301147.9286	4258794.32
619	301148.2855	4258796.159
620	301149.216	4258799.025
621	301151.8295	4258804.772
622	301155.2382	4258812.269
623	301163.8196	4258831.142
624	301161.4177	4258865.941
625	301161.4958	4258867.072
626	301161.3307	4258868.974
627	301161.2611	4258869.776
628	301162.6943	4258899.391
629	301165.5227	4258906.216
630	301171.8653	4258916.364
631	301176.919	4258928.48
632	301180.531	4258932.391
633	301228.925	4258984.791
634	301229.5766	4258985.649
635	301230.8841	4258987.37
636	301232.1993	4258989.07
637	301234.2413	4258990.827
638	301268.4681	4259024.649
639	301275.3274	4259034.41
640	301321.6295	4259075.421
641	301350.0723	4259109.817
642	301414.2339	4259211.02
643	301453.055	4259280.653
644	301508.8226	4259377.708
645	301529.9893	4259396.89
646	301542.5571	4259449.807
647	301550.4946	4259484.203
648	301572.9842	4259549.026
649	301598.7811	4259598.635
650	301626.4157	4259671.731

AA	X	Y
651	301648.9309	4259714.885
652	301675.7436	4259736.501
653	301694.812	4259763.963
654	301747.9323	4259817.08
655	301769.9302	4259836.061
656	301784.4467	4259860.342
657	301848.3945	4259933.678
658	301884.5291	4259996.035
659	301917.2006	4260072.617
660	301937.4297	4260122.633
661	301972.7248	4260177.266
662	302002.933	4260224.376
663	302032.6987	4260275.309
664	302057.1727	4260330.871
665	302060.5827	4260334.963
666	302082.7415	4260368.437
667	302124.7616	4260419.375
668	302171.7976	4260474.481
669	302243.1807	4260519.441
670	302281.4075	4260560.398
671	302274.7929	4260623.898
672	302270.1627	4260676.815
673	302260.5177	4260722.77
674	302258.537	4260731.584
675	302274.0587	4260777.407
676	302277.1676	4260785.559
677	302279.9124	4260792.757
678	302281.296	4260794.022
679	302297.6662	4260824.639
680	302316.425	4260850.36
681	302320.9253	4260857.967
682	302333.9652	4260880.007
683	302377.9347	4260887.515
684	302402.0228	4260901.527
685	302407.6703	4260959.514
686	302408.9659	4260972.817
687	302430.1732	4261021.344
688	302441.5925	4261047.473
689	302446.0401	4261056.179
690	302451.2242	4261068.398
691	302458.3545	4261080.282
692	302462.43	4261088.259
693	302476.6722	4261110.699
694	302513.8555	4261153.113
695	302514.501	4261153.66
696	302540.9182	4261205.717
697	302568.6995	4261279.139
698	302592.2062	4261316.852
699	302655.0589	4261370.593
700	302734.2562	4261425.007



ΑΑ	Χ	Υ
701	302760.1353	4261450.289
702	302760.5664	4261450.71
703	302761.9799	4261453.031
704	302803.8635	4261521.815
705	302853.8868	4261569.034
706	302859.6888	4261592.354
707	302845.4013	4261631.248
708	302850.3015	4261648.874
709	302874.6582	4261681.959
710	302876.8247	4261683.845
711	302881.1989	4261687.141
712	302925.4268	4261706.814
713	302957.5349	4261726.14
714	302985.5054	4261745.258
715	302988.3879	4261747.228
716	302996.3793	4261758.459
717	303009.1193	4261766.499
718	303018.0193	4261777.019
719	303025.4993	4261800.609
720	303029.9593	4261821.039
721	303030.6993	4261840.019
722	303029.3493	4261889.299
723	303030.1693	4261897.369
724	303033.8393	4261933.239
725	303036.5293	4261959.479
726	303046.0993	4261981.009
727	303053.3593	4261992.859
728	303057.1993	4262003.569
729	303056.2493	4262012.689
730	303050.0993	4262037.259
731	303043.7293	4262055.239
732	303036.5293	4262081.499
733	303032.5393	4262108.609
734	303031.7393	4262128.549
735	303032.2993	4262136.649
736	303034.2709	4262151.249
737	303032.1207	4262154.852
738	303028.4307	4262173.982
739	303040.2271	4262197.393
740	303047.152	4262211.137
741	303053.7274	4262234.719
742	303045.0366	4262301.137
743	303012.2219	4262383.305
744	302978.2208	4262469.271
745	302977.879	4262487.23
746	302974.8205	4262504.13
747	302977.3644	4262519.881
748	302983.4804	4262557.75
749	302984.3078	4262562.874
750	302985.2519	4262565.566

ΑΑ	Χ	Υ
751	302993.0693	4262587.859
752	303007.2648	4262628.341
753	303007.471	4262628.716
754	303025.1405	4262653.054
755	303030.8871	4262660.97
756	303048.1254	4262684.715
757	303142.1056	4262787.109
758	303144.8207	4262789.497
759	303154.9556	4262801.234
760	303166.2793	4262814.349
761	303168.3132	4262816.11
762	303185.2293	4262830.759
763	303194.2693	4262838.289
764	303200.2993	4262846.319
765	303207.3193	4262857.859
766	303218.8693	4262870.909
767	303231.9293	4262877.429
768	303244.6671	4262881.652
769	303261.5688	4262902.296
770	303261.8974	4262902.877
771	303262.7879	4262903.862
772	303282.3907	4262933.068
773	303283.2899	4262942.384
774	303284.2397	4262952.226
775	303287.4899	4262985.9
776	303285.9278	4263013.049
777	303283.1477	4263061.364
778	303281.1184	4263096.633
779	303283.1393	4263113.449
780	303284.1356	4263115.378
781	303283.8994	4263116.358
782	303288.4169	4263127.108
783	303305.339	4263167.378
784	303327.252	4263193.245
785	303352.1209	4263205.224
786	303412.7749	4263238.991
787	303459.3793	4263252.659
788	303492.9848	4263263.725
789	303503.2626	4263273.916
790	303504.5604	4263293.821
791	303490.339	4263366.251
792	303479.7556	4263434.712
793	303486.701	4263509.126
794	303480.4178	4263540.322
795	303477.5037	4263547.763
796	303465.6058	4263578.143
797	303460.2693	4263621.909
798	303446.7324	4263691.232
799	303433.4547	4263754.237
800	303420.599	4263814.77



AA	X	Y
801	303411.778	4263830.556
802	303373.6026	4263898.871
803	303361.9558	4263918.88
804	303359.0589	4263928.48
805	303356.3624	4263937.416
806	303352.9059	4263946.171
807	303350.2153	4263952.985
808	303341.5056	4263975.044
809	303328.9512	4263994.263
810	303325.4328	4263998.838
811	303324.0721	4264000.183
812	303321.3356	4264002.887
813	303214.337	4264108.626
814	303142.1056	4264192.763
815	303071.4323	4264284.447
816	303041.3286	4264357.449
817	302973.5951	4264500.442
818	302922.401	4264674.855
819	302924.1693	4264724.83
820	302919.936	4264753.617
821	302921.6293	4264780.71
822	302919.7993	4264797.819
823	302914.2893	4264807.139
824	302904.3493	4264820.539
825	302901.4393	4264825.099
826	302896.9193	4264836.969
827	302890.1393	4264846.979
828	302886.1449	4264852.525
829	302882.6493	4264857.379
830	302880.9993	4264864.229
831	302879.5793	4264869.829
832	302877.5993	4264875.699
833	302877.0493	4264887.279
834	302877.9893	4264899.409
835	302878.3093	4264904.059
836	302878.599	4264905.431
837	302883.0393	4264926.469
838	302884.2993	4264935.689
839	302887.3193	4264964.599
840	302888.5793	4264993.449
841	302889.3393	4265028.399
842	302888.2093	4265047.549
843	302880.1293	4265077.589
844	302877.8593	4265089.429
845	302877.6093	4265099.129
846	302870.7993	4265126.279
847	302868.0393	4265130.039
848	302867.9193	4265136.439
849	302866.4452	4265150.699
850	302864.6693	4265167.879

AA	X	Y
851	302861.4551	4265185.683
852	302858.6993	4265200.949
853	302856.7993	4265212.329
854	302849.0193	4265230.169
855	302841.9293	4265243.659
856	302825.6893	4265259.669
857	302808.3892	4265275.318
858	302806.1429	4265280.318
859	302757.2243	4265328.672
860	302748.6407	4265342.712
861	302731.4825	4265370.779
862	302698.8614	4265424.139
863	302676.927	4265460.019
864	302640.1592	4265520.162
865	302616.5888	4265558.718
866	302605.7218	4265576.494
867	302567.2893	4265628.409
868	302545.7393	4265664.189
869	302534.3593	4265684.109
870	302526.1061	4265706.726
871	302502.5279	4265745.294
872	302483.1293	4265770.709
873	302457.5093	4265802.829
874	302441.6493	4265815.439
875	302426.8293	4265828.669
876	302426.4279	4265829.246
877	302421.9493	4265835.689
878	302417.8193	4265841.829
879	302414.6193	4265850.839
880	302413.2593	4265868.009
881	302411.5693	4265891.999
882	302406.3793	4265916.699
883	302397.8393	4265947.199
884	302393.2693	4265969.459
885	302394.1793	4265991.109
886	302394.5275	4265992.416
887	302461.8311	4266103.467
888	302478.7645	4266150.504
889	302465.5941	4266223.882
890	302458.8644	4266243.04
891	302437.3718	4266304.222
892	302413.5409	4266354.992
893	302406.0072	4266371.042
894	302394.0976	4266396.415
895	302401.1847	4266459.34
896	302406.5272	4266502.478
897	302446.7792	4266676.38
898	302463.012	4266703.28
899	302496.3012	4266758.445
900	302512.6312	4266785.506



ΑΑ	X	Y
901	302557.7868	4266902.158
902	302582.9777	4266948.018
903	302621.1027	4267017.425
904	302631.1648	4267035.743
905	302692.0485	4267090.906
906	302709.9872	4267142.341
907	302738.5623	4267345.621
908	302775.8686	4267451.984
909	302841.75	4267576.603
910	302921.1252	4267649.152
911	302992.5628	4267753.768
912	303013.2004	4267865.687
913	303054.4754	4267936.331
914	303144.9631	4268043.964
915	303178.3222	4268055.648
916	303260.2165	4268084.333
917	303284.8767	4268092.97
918	303294.9822	4268096.51
919	303404.6238	4268251.649
920	303415.8303	4268285.269
921	303418.2766	4268292.608
922	303425.6394	4268314.696
923	303431.5686	4268332.484
924	303434.1325	4268340.175
925	303441.5335	4268362.378
926	303453.2725	4268397.595
927	303454.9533	4268441.384
928	303458.9736	4268546.126
929	303455.2994	4268729.513
930	303455.0398	4268742.469
931	303467.8978	4268776.952
932	303474.6097	4268794.952
933	303491.0849	4268839.136
934	303483.4192	4268846.869
935	303471.6893	4268867.119
936	303458.8793	4268873.529
937	303455.8393	4268876.689
938	303447.6693	4268879.459
939	303438.2493	4268879.829
940	303428.5392	4268879.409
941	303411.3765	4268883.079
942	303403.1021	4268882.482
943	303361.5866	4268879.486
944	303353.2093	4268881.799
945	303348.9132	4268882.631
946	303331.5293	4268885.999
947	303325.0693	4268888.899
948	303308.2093	4268896.489
949	303300.5293	4268902.019
950	303292.3593	4268907.909

ΑΑ	X	Y
951	303288.9793	4268911.459
952	303264.0593	4268937.709
953	303261.5893	4268940.309
954	303260.7193	4268941.319
955	303238.1193	4268967.579
956	303212.9293	4268996.839
957	303196.2293	4269009.119
958	303174.2293	4269025.279
959	303166.1393	4269030.669
960	303153.1793	4269039.299
961	303141.1834	4269047.283
962	303109.9598	4269068.064
963	303105.1293	4269071.279
964	303101.7448	4269075.512
965	303055.91	4269117.069
966	302944.9023	4269305.217
967	302895.9837	4269495.247
968	302890.3393	4269600.611
969	302936.3762	4269659.658
970	302953.5903	4269681.737
971	302968.9406	4269701.425
972	302974.1797	4269708.145
973	302974.6583	4269709.449
974	302975.1981	4269710.606
975	302987.5156	4269728.074
976	303053.7463	4269830.622
977	303115.2717	4269880.016
978	303158.1598	4269917.189
979	303178.8893	4269935.309
980	303199.6893	4269946.959
981	303223.0503	4269951.48
982	303255.0578	4269952.664
983	303290.9032	4269966.5
984	303344.4764	4269998.604
985	303365.1796	4270010.644
986	303371.5637	4270011.915
987	303391.8944	4270033.301
988	303404.0136	4270066.563
989	303414.3925	4270115.775
990	303420.8093	4270158.129
991	303421.7593	4270164.379
992	303422.3493	4270183.029
993	303422.4532	4270186.378
994	303422.6293	4270192.059
995	303423.0593	4270205.779
996	303419.3454	4270217.206
997	303416.2893	4270226.609
998	303416.2363	4270232.971
999	303416.0393	4270256.649
1000	303422.0193	4270282.339



AA	X	Y
1001	303430.0993	4270317.059
1002	303448.8582	4270358.379
1003	303479.6943	4270388.381
1004	303496.6277	4270398.435
1005	303541.0034	4270406.51
1006	303586.5862	4270419.072
1007	303613.4193	4270438.409
1008	303613.286	4270439.181
1009	303604.6393	4270489.299
1010	303592.8793	4270500.939
1011	303578.0193	4270507.329
1012	303558.6493	4270528.609
1013	303545.6693	4270547.719
1014	303537.9393	4270567.119
1015	303520.3793	4270587.899
1016	303512.7793	4270592.569
1017	303484.8287	4270623.64
1018	303475.6468	4270633.847
1019	303449.9093	4270662.459
1020	303413.5693	4270674.329
1021	303403.1793	4270674.699
1022	303387.0893	4270675.279
1023	303344.9693	4270676.779
1024	303279.6793	4270656.089
1025	303183.9393	4270631.719
1026	303170.3493	4270629.229
1027	303166.4993	4270628.519
1028	303129.4718	4270621.719
1029	303113.5048	4270618.204
1030	303068.9893	4270600.919
1031	303005.0493	4270569.669
1032	303001.4455	4270569.872
1033	302964.1428	4270571.977
1034	302924.4193	4270574.219
1035	302875.0739	4270595.305
1036	302874.5348	4270595.446
1037	302874.2406	4270595.661
1038	302848.3393	4270606.729
1039	302793.3957	4270654.713
1040	302758.4387	4270731.81
1041	302728.8053	4270818.065
1042	302701.4764	4270915.588
1043	302640.4343	4271069.949
1044	302635.6718	4271132.92
1045	302632.4968	4271172.607
1046	302634.6134	4271214.411
1047	302659.4843	4271327.653
1048	302647.3135	4271422.374
1049	302623.5009	4271493.812
1050	302608.6842	4271519.741

AA	X	Y
1051	302586.4592	4271533.499
1052	302561.0591	4271537.204
1053	302529.3008	4271531.828
1054	302389.8172	4271444.936
1055	302356.1064	4271427.033
1056	302283.0932	4271372.225
1057	302246.0515	4271318.25
1058	302211.1264	4271303.433
1059	302171.968	4271312.958
1060	302148.6846	4271346.825
1061	302130.6929	4271382.809
1062	302083.3358	4271449.353
1063	302064.3448	4271493.759
1064	302062.033	4271499.165
1065	302040.7344	4271548.967
1066	302009.3456	4271620.705
1067	302002.1457	4271630.067
1068	301984.8785	4271652.522
1069	301965.0339	4271678.327
1070	301957.8365	4271687.209
1071	301922.0329	4271731.393
1072	301876.8772	4271882.382
1073	301851.4772	4271985.393
1074	301816.1994	4272082.76
1075	301816.6485	4272112.4
1076	301798.6449	4272242.685
1077	301785.1548	4272290.194
1078	301765.3992	4272412.961
1079	301772.4548	4272490.572
1080	301834.5438	4272609.105
1081	301862.7661	4272666.961
1082	301906.1068	4272845.139
1083	301910.6813	4272863.946
1084	301913.2403	4272874.466
1085	301913.5662	4272875.806
1086	301908.5646	4272894.047
1087	301905.4477	4272905.414
1088	301901.5717	4272919.55
1089	301839.9816	4272955.083
1090	301828.1938	4272961.884
1091	301825.6726	4272962.942
1092	301713.8936	4273009.862
1093	301647.5712	4273049.373
1094	301598.1822	4273176.373
1095	301599.5934	4273241.284
1096	301610.8823	4273348.529
1097	301572.7822	4273489.641
1098	301579.8378	4273602.53
1099	301544.5599	4273674.496
1100	301420.3819	4273870.641



ΑΑ	Χ	Υ
1101	301427.4375	4273945.43
1102	301503.6376	4274010.342
1103	301523.3932	4274238.942
1104	301547.3821	4274327.842
1105	301577.0155	4274382.876
1106	301689.4812	4274508.465
1107	301717.7035	4274566.32
1108	301714.8813	4274677.798
1109	301670.9163	4274780.192
1110	301651.8662	4274821.467
1111	301619.3224	4274830.993
1112	301596.3036	4274830.199
1113	301516.1347	4274788.13
1114	301498.2753	4274770.667
1115	301472.8752	4274729.392
1116	301453.8252	4274717.486
1117	301423.6626	4274719.867
1118	301395.0876	4274738.124
1119	301360.1625	4274750.824
1120	301336.35	4274768.286
1121	301279.1998	4274815.911
1122	301218.8747	4274896.874
1123	301191.8872	4274946.086
1124	301174.8215	4275031.018
1125	301166.0902	4275171.512
1126	301148.6277	4275270.731
1127	301137.5152	4275321.531
1128	301133.5464	4275409.637
1129	301120.0526	4275499.331
1130	301104.9714	4275564.419
1131	301068.4588	4275618.394
1132	301100.0531	4275655.605
1133	301104.1776	4275660.463
1134	301115.7839	4275667.057
1135	301139.1027	4275680.307
1136	301143.3495	4275687.473
1137	301146.3256	4275692.495
1138	301164.5027	4275723.169
1139	301167.9361	4275730.159
1140	301186.7278	4275768.413
1141	301208.2385	4275794.607
1142	301212.85	4275798.258
1143	301214.6121	4275799.653
1144	301227.2885	4275809.688
1145	301251.101	4275821.594
1146	301278.0886	4275820.801
1147	301305.0761	4275805.719
1148	301348.4683	4275783.656
1149	301349.7009	4275783.029
1150	301351.9075	4275781.907

ΑΑ	Χ	Υ
1151	301359.1829	4275779.633
1152	301376.4169	4275774.248
1153	301377.8887	4275774.035
1154	301419.3764	4275778.732
1155	301433.4564	4275781.217
1156	301473.3515	4275788.257
1157	301496.1003	4275787.702
1158	301500.7228	4275787.589
1159	301536.4393	4275786.718
1160	301538.7306	4275786.331
1161	301542.6018	4275785.676
1162	301550.6233	4275783.099
1163	301559.1197	4275780.37
1164	301732.2762	4275578.349
1165	301779.622	4275534.991
1166	301782.1412	4275532.684
1167	301786.2782	4275528.609
1168	301846.6193	4275469.179
1169	301883.2393	4275436.419
1170	301922.9593	4275420.229
1171	301970.5292	4275427.539
1172	301979.8528	4275435.576
1173	301987.8619	4275447.925
1174	302000.5631	4275490.555
1175	302003.429	4275528.828
1176	301987.9406	4275592.994
1177	301996.6719	4275630.3
1178	302001.3339	4275654.356
1179	302019.7262	4275749.258
1180	302024.1932	4275768.257
1181	302024.4193	4275769.219
1182	302048.0793	4275862.289
1183	302067.4393	4275936.079
1184	302070.9993	4275973.599
1185	302071.6293	4275984.529
1186	302071.8392	4275987.609
1187	302072.4293	4275996.129
1188	302073.8843	4276003.398
1189	302089.9654	4276019.938
1190	302097.0021	4276027.176
1191	302107.9136	4276031.217
1192	302115.2422	4276033.932
1193	302118.4334	4276035.114
1194	302166.8522	4276036.701
1195	302168.1555	4276036.535
1196	302171.4493	4276037.489
1197	302194.447	4276036.271
1198	302238.2947	4276033.951
1199	302279.5619	4276009.051
1200	302301.7937	4275998.491



AA	X	Y
1201	302302.7993	4275998.609
1202	302316.1693	4275997.479
1203	302321.7193	4275999.759
1204	302349.6393	4276011.249
1205	302359.9088	4276015.475
1206	302394.112	4276047.292
1207	302417.3905	4276068.947
1208	302486.2772	4276114.573
1209	302529.2196	4276119.941
1210	302556.9532	4276103.837
1211	302578.4244	4276061.79
1212	302601.6848	4275995.587
1213	302620.4721	4275899.861
1214	302652.1793	4275816.479
1215	302672.2193	4275797.029
1216	302703.9893	4275784.819
1217	302725.2993	4275780.849
1218	302729.2993	4275780.109
1219	302744.4842	4275778.562
1220	302766.1844	4275784.991
1221	302766.2077	4275784.99
1222	302842.2515	4275819.881
1223	302939.677	4275904.871
1224	302948.2297	4275911.998
1225	302959.018	4275920.989
1226	302987.9871	4275945.129
1227	303018.7031	4275956.648
1228	303023.7393	4275959.689
1229	303057.0968	4275971.046
1230	303091.7136	4275984.027
1231	303102.5001	4275988.072
1232	303184.9852	4276032.982
1233	303189.7949	4276042.487
1234	303191.6936	4276046.239
1235	303195.7794	4276054.314
1236	303200.2732	4276063.194
1237	303206.8623	4276076.216
1238	303222.5598	4276107.237
1239	303243.1363	4276141.233
1240	303260.4811	4276150.605
1241	303267.5292	4276154.413
1242	303354.0707	4276201.173
1243	303370.6128	4276207.349
1244	303382.6959	4276211.86
1245	303421.1682	4276226.223
1246	303496.2242	4276226.223
1247	303498.0223	4276227.121
1248	303506.4393	4276236.448
1249	303510.315	4276240.743
1250	303513.3682	4276244.126

AA	X	Y
1251	303516.7865	4276247.914
1252	303525.4029	4276257.462
1253	303530.3133	4276262.903
1254	303533.885	4276276.499
1255	303544.1801	4276315.686
1256	303544.5599	4276321.289
1257	303551.1567	4276418.59
1258	303552.841	4276428.875
1259	303577.2815	4276552.764
1260	303620.2239	4276622.545
1261	303659.0299	4276637.974
1262	303675.3886	4276646.338
1263	303687.767	4276657.554
1264	303692.1193	4276662.819
1265	303715.6293	4276691.259
1266	303767.4592	4276734.349
1267	303792.6893	4276745.809
1268	303858.1961	4276757.635
1269	303916.1023	4276772.111
1270	303939.9269	4276783.97
1271	303958.5888	4276802.211
1272	303967.2296	4276827.303
1273	303964.8974	4276849.848
1274	303957.2464	4276930.242
1275	303949.055	4276958.595
1276	303944.6894	4276971.692
1277	303938.163	4276996.823
1278	303934.5083	4277003.122
1279	303926.4566	4277116.74
1280	303923.7727	4277171.313
1281	303928.5391	4277195.826
1282	303929.8466	4277202.55
1283	303936.2975	4277235.726
1284	303958.6633	4277304.613
1285	303997.1325	4277386.025
1286	304031.6653	4277447.217
1287	304064.7667	4277480.319
1288	304115.7608	4277520.577
1289	304139.9159	4277564.414
1290	304173.0173	4277576.044
1291	304231.9753	4277569.573
1292	304245.7735	4277568.059
1293	304246.7982	4277568.325
1294	304263.3752	4277581.412
1295	304298.2658	4277626.144
1296	304328.3255	4277651.373
1297	304339.8982	4277658.092
1298	304352.7093	4277672.959
1299	304355.5846	4277684.084
1300	304353.7936	4277746.766



ΑΑ	X	Y
1301	304350.2562	4277778.184
1302	304349.3097	4277786.59
1303	304347.6693	4277801.159
1304	304352.2493	4277889.179
1305	304355.9456	4277908.803
1306	304356.0591	4277912.605
1307	304357.2139	4277915.536
1308	304360.2393	4277931.599
1309	304367.6174	4277941.945
1310	304367.8212	4277942.231
1311	304378.0593	4277956.589
1312	304384.1757	4277960.471
1313	304387.1975	4277962.39
1314	304391.888	4277965.367
1315	304396.1593	4277968.079
1316	304408.8424	4277974.335
1317	304432.5502	4277975.587
1318	304466.5462	4277957.695
1319	304483.5442	4277946.064
1320	304498.4133	4277915.225
1321	304508.4892	4277904.939
1322	304514.4693	4277900.649
1323	304532.6293	4277902.759
1324	304537.8593	4277904.309
1325	304553.9492	4277930.159
1326	304555.1385	4277932.877
1327	304567.4493	4277961.019
1328	304569.2725	4277965.189
1329	304573.0074	4277988.112
1330	304591.7947	4278026.581
1331	304614.1605	4278047.158
1332	304620.7778	4278051.47
1333	304671.1562	4278084.301
1334	304676.8321	4278088
1335	304681.3769	4278090.962
1336	304690.336	4278096.8
1337	304693.7828	4278099.046
1338	304703.8922	4278118.549
1339	304704.5341	4278122.031
1340	304727.1526	4278244.693
1341	304729.6133	4278250.981
1342	304731.9731	4278257.012
1343	304743.256	4278285.846
1344	304791.5662	4278320.736
1345	304825.5622	4278325.21
1346	304831.4563	4278323.8
1347	304838.7173	4278322.064
1348	304866.7153	4278315.369
1349	304919.108	4278292.915
1350	304934.9644	4278286.119

ΑΑ	X	Y
1351	304972.6413	4278279.309
1352	304976.5428	4278279.633
1353	304999.6577	4278281.552
1354	305023.4094	4278306.183
1355	305023.8127	4278306.601
1356	305028.0351	4278315.178
1357	305032.037	4278323.307
1358	305036.8537	4278333.091
1359	305038.8759	4278357.582
1360	305031.7322	4278370.282
1361	305005.5296	4278394.537
1362	304996.0791	4278400.538
1363	304892.3018	4278503.42
1364	304830.1575	4278573.237
1365	304819.8365	4278584.832
1366	304775.9996	4278651.929
1367	304736.6357	4278719.027
1368	304717.1825	4278801.703
1369	304715.4993	4278806.999
1370	304709.4993	4278829.999
1371	304709.4993	4278842.999
1372	304712.1793	4278853.999
1373	304712.6493	4278855.929
1374	304716.3693	4278864.199
1375	304716.9093	4278865.199
1376	304725.9765	4278882.129
1377	304733.0572	4278902.426
1378	304753.6337	4278927.476
1379	304789.419	4278938.212
1380	304907.5105	4278925.687
1381	304963.8133	4278904.407
1382	304988.1696	4278895.201
1383	305024.1593	4278885.019
1384	305049.7106	4278876.141
1385	305057.9793	4278873.269
1386	305070.4208	4278868.942
1387	305090.4648	4278861.972
1388	305095.4047	4278860.254
1389	305100.7393	4278858.399
1390	305103.6993	4278857.369
1391	305119.0624	4278858.005
1392	305129.5719	4278858.44
1393	305133.1693	4278858.589
1394	305139.9193	4278859.899
1395	305186.9993	4278869.499
1396	305205.9593	4278886.499
1397	305211.2792	4278891.579
1398	305227.6892	4278907.239
1399	305247.3093	4278912.059
1400	305257.8293	4278914.639



AA	X	Y
1401	305285.4393	4278920.589
1402	305286.9086	4278921.529
1403	305299.5293	4278929.609
1404	305320.4592	4278938.321
1405	305323.1192	4278939.429
1406	305336.9893	4278947.149
1407	305351.6093	4278949.559
1408	305368.3193	4278946.959
1409	305393.3193	4278935.919
1410	305411.6792	4278926.429
1411	305437.2793	4278913.209
1412	305438.8818	4278910.538
1413	305444.6893	4278900.859
1414	305452.7792	4278852.899
1415	305453.6192	4278847.869
1416	305457.4293	4278837.999
1417	305458.8293	4278834.369
1418	305463.4799	4278822.321
1419	305464.0614	4278817.436
1420	305468.782	4278808.585
1421	305477.913	4278791.465
1422	305478.3755	4278790.597
1423	305497.1628	4278761.075
1424	305522.2125	4278750.339
1425	305557.9978	4278786.124
1426	305597.3616	4278853.222
1427	305616.1489	4278893.48
1428	305607.2026	4278943.58
1429	305602.7294	4278984.733
1430	305617.0435	4279040.2
1431	305641.467	4279087.615
1432	305650.4133	4279138.609
1433	305646.8348	4279186.92
1434	305613.7334	4279259.922
1435	305588.6837	4279312.705
1436	305588.9521	4279354.037
1437	305613.1071	4279366.562
1438	305619.3493	4279364.299
1439	305643.1793	4279358.729
1440	305670.5468	4279354.271
1441	305684.4992	4279351.999
1442	305699.7193	4279352.319
1443	305707.9993	4279352.499
1444	305719.4992	4279358.499
1445	305730.7278	4279363.932
1446	305739.2503	4279390.717
1447	305745.6307	4279394.261
1448	305763.4054	4279404.136
1449	305794.7175	4279402.347
1450	305816.1887	4279391.611

AA	X	Y
1451	305833.1867	4279387.138
1452	305852.8686	4279390.717
1453	305866.2881	4279431.87
1454	305894.0217	4279514.176
1455	305905.652	4279565.17
1456	305913.7037	4279594.693
1457	305930.6122	4279638.172
1458	305952.1728	4279660.001
1459	305988.8528	4279668.948
1460	306033.5844	4279660.001
1461	306060.4234	4279645.687
1462	306078.9672	4279631.067
1463	306086.628	4279625.027
1464	306100.5924	4279614.017
1465	306118.4916	4279604.849
1466	306141.3893	4279601.079
1467	306184.8793	4279609.869
1468	306199.9094	4279615.83
1469	306224.0517	4279627.437
1470	306276.835	4279665.011
1471	306292.6175	4279674.966
1472	306334.9861	4279701.691
1473	306487.2525	4279763.6
1474	306569.5587	4279798.49
1475	306604.4494	4279815.488
1476	306642.0239	4279820.856
1477	306682.2824	4279824.435
1478	306702.1896	4279819.642
1479	306708.8047	4279818.05
1480	306730.5925	4279812.804
1481	306780.692	4279796.701
1482	306811.1095	4279802.963
1483	306810.8808	4279808.203
1484	306810.3927	4279819.384
1485	306809.1413	4279848.053
1486	306815.4037	4279877.576
1487	306834.191	4279909.783
1488	306892.3421	4279950.041
1489	306938.863	4279965.25
1490	306970.1751	4279967.039
1491	307021.1692	4279950.936
1492	307038.5415	4279946.593
1493	307058.0893	4279947.959
1494	307101.2993	4279966.409
1495	307111.3593	4279975.159
1496	307124.8793	4279986.909
1497	307135.8976	4280007.429
1498	307138.9793	4280013.169
1499	307150.7097	4280035.022
1500	307156.4893	4280045.789



ΑΑ	Χ	Υ
1501	307158.5593	4280049.629
1502	307166.0545	4280084.112
1503	307169.0293	4280097.799
1504	307175.4593	4280114.019
1505	307177.3194	4280115.622
1506	307182.1993	4280119.829
1507	307200.8693	4280127.789
1508	307208.0792	4280132.029
1509	307238.8393	4280150.129
1510	307244.7193	4280154.429
1511	307263.6793	4280168.299
1512	307279.2893	4280179.929
1513	307283.8892	4280191.859
1514	307285.4193	4280217.869
1515	307284.6971	4280227.477
1516	307281.7393	4280266.829
1517	307282.7292	4280297.269
1518	307295.2193	4280322.229
1519	307295.5893	4280322.969
1520	307312.1193	4280335.509
1521	307339.6703	4280339.621
1522	307363.513	4280331.647
1523	307402.5458	4280334.933
1524	307429.3769	4280330.587
1525	307464.9823	4280294.85
1526	307500.1926	4280277.09
1527	307529.4775	4280254.188
1528	307551.7404	4280249.424
1529	307592.7806	4280250.02
1530	307612.422	4280267.064
1531	307615.8184	4280270.011
1532	307625.35	4280278.282
1533	307625.3709	4280278.301
1534	307633.551	4280308.226
1535	307633.1264	4280312.813
1536	307632.3773	4280316.957
1537	307632.6208	4280318.273
1538	307627.9609	4280368.606
1539	307634.688	4280407.022
1540	307656.0318	4280432.932
1541	307659.98	4280440.13
1542	307670.3349	4280459.01
1543	307677.9333	4280466.469
1544	307681.3699	4280469.842
1545	307694.5763	4280469.875
1546	307701.2619	4280469.892
1547	307722.7202	4280454.819
1548	307727.7492	4280451.286
1549	307756.4546	4280421.529
1550	307784.3699	4280393.377

ΑΑ	Χ	Υ
1551	307824.0344	4280371.283
1552	307866.8397	4280359.155
1553	307910.2929	4280373.964
1554	307947.8514	4280402.126
1555	307966.6995	4280423.076
1556	307970.7793	4280435.969
1557	307971.3993	4280460.139
1558	307974.4592	4280467.789
1559	307985.9493	4280468.559
1560	307992.8293	4280469.009
1561	307999.5883	4280469.444
1562	308005.8781	4280471.545
1563	308059.5827	4280481.88
1564	308112.6699	4280483.775
1565	308166.53	4280466.098
1566	308222.567	4280470.037
1567	308262.2536	4280483.352
1568	308290.741	4280478.969
1569	308299.6492	4280486.119
1570	308300.4203	4280486.922
1571	308323.8825	4280511.378
1572	308348.5193	4280537.059
1573	308388.5992	4280584.069
1574	308437.0893	4280634.299
1575	308459.7628	4280654.838
1576	308463.2293	4280657.979
1577	308489.5593	4280676.119
1578	308524.0693	4280710.339
1579	308543.8393	4280719.149
1580	308576.0792	4280727.969
1581	308619.2693	4280731.619
1582	308667.1193	4280734.599
1583	308706.0438	4280743.886
1584	308718.2624	4280746.444
1585	308731.5401	4280748.36
1586	308748.2393	4280750.769
1587	308770.7693	4280758.799
1588	308779.8793	4280766.009
1589	308780.8674	4280768.189
1590	308781.7693	4280770.179
1591	308784.0493	4280779.659
1592	308795.8426	4280794.943
1593	308799.4193	4280799.579
1594	308816.3493	4280825.279
1595	308821.964	4280832.39
1596	308832.6693	4280845.949
1597	308855.0593	4280866.239
1598	308875.2045	4280875.7
1599	308886.2293	4280880.879
1600	308890.5926	4280881.629



AA	X	Y
1601	308914.8793	4280885.809
1602	308953.7793	4280884.099
1603	308978.8993	4280877.649
1604	309013.8193	4280874.619
1605	309041.1393	4280873.479
1606	309064.2893	4280866.839
1607	309099.8393	4280858.839
1608	309120.0493	4280872.769
1609	309127.0368	4280877.046
1610	309164.9893	4280900.279
1611	309192.8693	4280923.959
1612	309211.7293	4280943.119
1613	309220.7393	4280963.939
1614	309221.6434	4280973.23
1615	309222.8073	4280976.228
1616	309223.4056	4280991.339
1617	309224.6093	4281003.709
1618	309223.2893	4281014.779
1619	309219.2967	4281017.66
1620	309211.6093	4281023.209
1621	309210.5293	4281036.929
1622	309218.6093	4281049.459
1623	309219.9193	4281051.479
1624	309220.1633	4281051.668
1625	309224.4993	4281055.029
1626	309230.6893	4281059.819
1627	309245.4693	4281099.299
1628	309248.7949	4281115.143
1629	309253.0293	4281135.319
1630	309251.8392	4281150.409
1631	309261.2292	4281175.429
1632	309273.0493	4281188.079
1633	309293.3893	4281193.249
1634	309317.9093	4281187.799
1635	309340.8293	4281164.899
1636	309368.5693	4281157.659
1637	309393.5992	4281162.789
1638	309422.458	4281195.511
1639	309458.5612	4281242.046
1640	309491.6112	4281286.896
1641	309504.6569	4281296.348
1642	309508.8044	4281301.272
1643	309523.1107	4281310.443
1644	309531.1473	4281312.026
1645	309542.2603	4281314.214
1646	309558.097	4281313.058
1647	309561.0275	4281314.49
1648	309563.899	4281315.892
1649	309590.3793	4281328.829
1650	309613.5593	4281334.519

AA	X	Y
1651	309620.1992	4281341.919
1652	309624.9393	4281345.539
1653	309625.3293	4281345.839
1654	309627.9093	4281345.659
1655	309638.5893	4281344.939
1656	309674.7793	4281327.459
1657	309681.9997	4281321.325
1658	309698.8993	4281306.969
1659	309727.8492	4281298.529
1660	309757.4893	4281311.459
1661	309758.6993	4281312.949
1662	309774.2193	4281332.009
1663	309782.5793	4281359.519
1664	309796.8793	4281411.799
1665	309811.8592	4281457.129
1666	309815.2382	4281464.748
1667	309824.0592	4281484.639
1668	309839.7393	4281499.969
1669	309847.1892	4281502.909
1670	309875.2492	4281513.989
1671	309891.4434	4281511.399
1672	309918.5652	4281509.23
1673	309961.1905	4281489.719
1674	309984.5202	4281473.445
1675	310021.8593	4281437.969
1676	310038.6593	4281419.469
1677	310043.8492	4281412.309
1678	310046.3493	4281408.189
1679	310076.8192	4281374.709
1680	310092.3893	4281342.539
1681	310103.5293	4281315.029
1682	310112.5193	4281306.829
1683	310115.0793	4281306.429
1684	310117.3493	4281306.109
1685	310120.8293	4281305.939
1686	310124.1192	4281306.109
1687	310125.6193	4281306.599
1688	310127.7593	4281307.299
1689	310156.4226	4281317.298
1690	310172.1893	4281326.469
1691	310179.3993	4281330.659
1692	310185.4197	4281337.481
1693	310191.9216	4281344.849
1694	310196.7668	4281350.339
1695	310205.1231	4281364.207
1696	310222.8848	4281397.124
1697	310229.2182	4281410.61
1698	310229.4054	4281411.485
1699	310239.6458	4281453.229
1700	310241.6393	4281471.089



ΑΑ	X	Y
1701	310242.9193	4281482.599
1702	310251.9393	4281554.439
1703	310252.3893	4281557.489
1704	310255.3719	4281577.756
1705	310260.5493	4281612.939
1706	310263.4465	4281632.974
1707	310269.3405	4281655.041
1708	310273.9451	4281666.273
1709	310277.7554	4281683.073
1710	310288.9082	4281711.138
1711	310298.171	4281738.904
1712	310304.8826	4281763.966
1713	310316.0725	4281795.313
1714	310316.3876	4281796.462
1715	310318.096	4281803.167
1716	310334.1256	4281818.143
1717	310349.3041	4281818.367
1718	310349.5268	4281818.861
1719	310367.4861	4281817.514
1720	310367.8437	4281817.428
1721	310385.6452	4281820.316
1722	310397.3436	4281814.861
1723	310402.4284	4281812.491
1724	310407.8257	4281812.026
1725	310412.7493	4281805.429
1726	310413.6394	4281803.127
1727	310420.4516	4281785.509
1728	310426.2671	4281765.441
1729	310437.5277	4281717.334
1730	310443.2486	4281684.468
1731	310443.7663	4281681.494
1732	310447.5819	4281656.215
1733	310451.2861	4281634.519
1734	310457.6361	4281616.528
1735	310462.3986	4281607.796
1736	310470.0716	4281596.948
1737	310480.3903	4281578.163
1738	310496.1893	4281564.089
1739	310510.8793	4281556.559
1740	310524.0592	4281553.169
1741	310526.9769	4281552.629
1742	310556.21	4281554.231
1743	310563.9693	4281556.559
1744	310571.4993	4281561.829
1745	310575.9193	4281570.679
1746	310577.6553	4281580.549
1747	310578.5893	4281585.859
1748	310586.3393	4281608.579
1749	310587.6038	4281613.723
1750	310590.4287	4281639.671

ΑΑ	X	Y
1751	310594.5023	4281662.238
1752	310600.121	4281680.819
1753	310611.8786	4281699.583
1754	310612.3036	4281699.98
1755	310612.3593	4281700.079
1756	310619.2593	4281708.849
1757	310624.8993	4281712.919
1758	310626.8691	4281713.579
1759	310644.5492	4281719.509
1760	310662.6193	4281721.689
1761	310677.1393	4281719.939
1762	310688.4693	4281718.579
1763	310703.6951	4281711.07
1764	310728.0293	4281697.099
1765	310744.8881	4281698.385
1766	310753.427	4281705.648
1767	310763.6722	4281728.217
1768	310773.65	4281772.968
1769	310790.9785	4281792.812
1770	310792.79	4281794.963
1771	310800.9961	4281804.704
1772	310822.2266	4281808.957
1773	310827.9666	4281809.157
1774	310858.3011	4281810.216
1775	310869.4642	4281813.081
1776	310901.6527	4281821.343
1777	310929.031	4281838.942
1778	310931.8342	4281844.083
1779	310933.5022	4281847.142
1780	310946.3793	4281870.759
1781	310959.0993	4281887.519
1782	310963.4552	4281889.694
1783	310975.7925	4281895.857
1784	310998.318	4281916.564
1785	311021.5013	4281929.075
1786	311067.886	4281947.935
1787	311068.5539	4281948.463
1788	311082.9054	4281959.81
1789	311090.3305	4281965.681
1790	311102.9285	4281975.642
1791	311108.9586	4281983.923
1792	311115.3109	4281992.648
1793	311119.1513	4281997.922
1794	311124.7001	4282005.543
1795	311125.624	4282006.812
1796	311218.056	4281947.827
1797	311221.9438	4281945.346
1798	311207.9565	4281914.498
1799	311177.4938	4281887.739
1800	311128.032	4281880.983



AA	X	Y
1801	311109.5816	4281883.485
1802	311102.2443	4281884.48
1803	311094.9939	4281885.464
1804	311067.3778	4281873.963
1805	311031.4189	4281842.578
1806	311000.2036	4281801.57
1807	310957.5564	4281767.702
1808	310934.8835	4281755.027
1809	310886.1475	4281761.466
1810	310881.5615	4281762.451
1811	310866.7735	4281765.625
1812	310858.8588	4281776.261
1813	310857.7423	4281776.818
1814	310851.0251	4281780.172
1815	310847.2202	4281781.013
1816	310843.6833	4281780.507
1817	310826.6832	4281769.746
1818	310825.7684	4281748.629
1819	310825.9705	4281722.201
1820	310814.9801	4281695.511
1821	310799.1083	4281672.635
1822	310797.4278	4281671.354
1823	310788.2505	4281654.978
1824	310780.1092	4281649.009
1825	310760.0893	4281651.029
1826	310733.5492	4281661.369
1827	310712.4093	4281671.709
1828	310691.2693	4281683.179
1829	310666.9793	4281691.269
1830	310651.4593	4281689.469
1831	310641.1471	4281682.388
1832	310633.4592	4281677.109
1833	310620.8493	4281636.509
1834	310607.3493	4281598.079
1835	310605.6982	4281590.308
1836	310603.4992	4281579.959
1837	310598.3793	4281549.219
1838	310583.2331	4281526.646
1839	310552.7738	4281518.093
1840	310528.4381	4281511.184
1841	310518.6971	4281516.378
1842	310483.6432	4281533.898
1843	310472.1741	4281543.343
1844	310448.329	4281575.66
1845	310429.7949	4281596.695
1846	310420.0275	4281622.279
1847	310398.9793	4281736.719
1848	310398.0992	4281750.459
1849	310394.7393	4281760.689
1850	310388.4293	4281774.189

AA	X	Y
1851	310383.5583	4281777.619
1852	310382.4493	4281776.965
1853	310367.1709	4281767.967
1854	310349.8047	4281751.998
1855	310336.6168	4281720.075
1856	310331.0453	4281677.402
1857	310320.1657	4281620.587
1858	310311.6329	4281592.782
1859	310294.5168	4281535.058
1860	310280.7508	4281478.841
1861	310273.322	4281445.196
1862	310265.8049	4281390.415
1863	310263.572	4281383.585
1864	310259.19	4281370.183
1865	310251.0599	4281345.318
1866	310228.6475	4281291.42
1867	310192.1308	4281271.678
1868	310167.0083	4281260.649
1869	310142.5761	4281261.23
1870	310108.3563	4281268.386
1871	310086.1203	4281274.199
1872	310065.7796	4281290.009
1873	310043.1993	4281330.009
1874	310023.6093	4281361.499
1875	309992.9793	4281398.269
1876	309969.1893	4281425.209
1877	309932.7993	4281440.949
1878	309910.4093	4281444.099
1879	309889.4193	4281437.099
1880	309864.5793	4281414.009
1881	309836.9393	4281373.429
1882	309815.1993	4281327.509
1883	309807.7393	4281311.169
1884	309794.5993	4281293.979
1885	309774.1093	4281280.679
1886	309751.9992	4281275.299
1887	309724.7993	4281272.009
1888	309721.8292	4281271.649
1889	309704.9997	4281275.747
1890	309683.6593	4281284.989
1891	309675.1977	4281289.578
1892	309658.9629	4281298.382
1893	309636.7562	4281299.7
1894	309613.1019	4281298.15
1895	309588.7311	4281283.934
1896	309555.5272	4281281.556
1897	309540.2431	4281283.506
1898	309513.6756	4281264.058
1899	309498.64	4281241.693
1900	309483.0011	4281211.416



ΑΑ	Χ	Υ
1901	309460.7867	4281183.409
1902	309449.0067	4281173.686
1903	309431.48	4281154.089
1904	309423.6993	4281145.389
1905	309414.0093	4281134.549
1906	309409.0193	4281128.979
1907	309389.0893	4281122.429
1908	309369.2792	4281124.149
1909	309343.3193	4281134.309
1910	309324.7793	4281148.279
1911	309310.7693	4281160.919
1912	309302.6992	4281164.869
1913	309295.1793	4281165.539
1914	309289.8293	4281164.549
1915	309285.5193	4281161.579
1916	309279.1293	4281150.869
1917	309274.9693	4281140.649
1918	309271.7065	4281126.653
1919	309269.5793	4281117.529
1920	309262.5492	4281079.389
1921	309253.5193	4281052.179
1922	309249.3393	4281039.139
1923	309248.6492	4281030.089
1924	309250.2793	4281023.579
1925	309252.1593	4281019.041
1926	309256.4692	4281008.639
1927	309257.6892	4281003.762
1928	309260.3793	4280993.009
1929	309260.8292	4280976.439
1930	309257.5737	4280968.78
1931	309257.5925	4280968.421
1932	309256.9276	4280967.26
1933	309253.4793	4280959.149
1934	309244.8724	4280941.733
1935	309244.5493	4280941.079
1936	309229.8893	4280913.649
1937	309209.8393	4280881.289
1938	309195.3093	4280864.759
1939	309192.2267	4280861.256
1940	309174.4493	4280841.059
1941	309152.1293	4280821.459
1942	309132.0093	4280812.089
1943	309113.2392	4280810.459
1944	309093.2193	4280812.569
1945	309075.3393	4280822.169
1946	309072.085	4280824.469
1947	309069.7491	4280826.121
1948	309063.411	4280830.602
1949	309049.2549	4280833.359
1950	309018.7988	4280842.015

ΑΑ	Χ	Υ
1951	308986.2218	4280848.607
1952	308958.5257	4280851.384
1953	308941.7224	4280858.067
1954	308931.5734	4280858.981
1955	308919.6093	4280860.059
1956	308906.699	4280858.686
1957	308905.0293	4280858.509
1958	308891.1342	4280854.817
1959	308888.2847	4280853.575
1960	308883.3569	4280851.427
1961	308877.0893	4280848.229
1962	308865.0292	4280836.179
1963	308863.7065	4280834.685
1964	308851.5995	4280821.013
1965	308835.8693	4280803.249
1966	308821.5245	4280782.907
1967	308806.4693	4280761.559
1968	308782.8993	4280715.609
1969	308780.0329	4280711.812
1970	308770.1993	4280698.789
1971	308751.5793	4280689.309
1972	308724.6493	4280684.459
1973	308703.3293	4280683.109
1974	308687.6492	4280688.699
1975	308675.0793	4280696.519
1976	308664.4793	4280703.699
1977	308661.9126	4280704.539
1978	308655.8093	4280706.539
1979	308646.4741	4280704.425
1980	308642.4692	4280703.519
1981	308618.8793	4280699.919
1982	308610.6093	4280698.759
1983	308594.8293	4280695.559
1984	308570.1032	4280690.411
1985	308569.8993	4280690.369
1986	308548.4993	4280682.149
1987	308542.2073	4280677.979
1988	308534.9792	4280673.189
1989	308521.0062	4280656.696
1990	308507.9543	4280637.581
1991	308492.6892	4280620.425
1992	308473.8856	4280599.292
1993	308458.4823	4280579.051
1994	308433.227	4280536.993
1995	308416.4592	4280514.189
1996	308396.6502	4280489.862
1997	308381.3792	4280471.109
1998	308352.9269	4280442.063
1999	308352.3809	4280441.55
2000	308329.8803	4280423.114



AA	X	Y
2001	308325.4193	4280419.459
2002	308314.9851	4280411.269
2003	308293.1003	4280392.156
2004	308290.2546	4280389.67
2005	308264.6361	4280375.488
2006	308239.6093	4280368.691
2007	308217.7561	4280356.004
2008	308188.8668	4280360.926
2009	308167.3861	4280380.995
2010	308136.9037	4280388.597
2011	308095.5311	4280408.616
2012	308080.4233	4280417.963
2013	308051.5977	4280425.526
2014	308025.3792	4280420.872
2015	308003.8764	4280405.535
2016	307997.0163	4280391.48
2017	307990.3645	4280377.851
2018	307987.0287	4280368.331
2019	307984.3074	4280360.564
2020	307978.7963	4280344.836
2021	307978.2444	4280343.826
2022	307977.7093	4280341.739
2023	307968.4293	4280320.369
2024	307956.3592	4280302.069
2025	307955.0731	4280301.101
2026	307942.7492	4280291.829
2027	307926.7493	4280284.469
2028	307911.8442	4280283.932
2029	307908.8505	4280283.825
2030	307905.268	4280284.033
2031	307899.0215	4280284.396
2032	307895.5003	4280285.919
2033	307882.2061	4280291.67
2034	307863.0838	4280306.399
2035	307833.5187	4280317.68
2036	307787.2274	4280339.933
2037	307752.698	4280368.773
2038	307734.0814	4280381.284
2039	307732.3082	4280382.475
2040	307720.176	4280394.922
2041	307712.0257	4280402.657
2042	307711.5981	4280403.19
2043	307698.3319	4280405.937
2044	307690.8684	4280406.619
2045	307690.2881	4280405.915
2046	307681.4635	4280400.69
2047	307676.5538	4280383.169
2048	307674.8008	4280356.164
2049	307674.5977	4280353.035
2050	307676.1824	4280340.493

AA	X	Y
2051	307675.8716	4280337.323
2052	307671.7879	4280295.679
2053	307673.7329	4280255.997
2054	307660.4486	4280237.821
2055	307640.8628	4280216.097
2056	307608.5396	4280198.908
2057	307589.8767	4280198.3
2058	307574.9289	4280196.891
2059	307554.1568	4280194.933
2060	307548.403	4280196.893
2061	307527.4397	4280204.033
2062	307496.6575	4280216.401
2063	307474.7966	4280225.399
2064	307452.2693	4280236.389
2065	307426.1993	4280250.879
2066	307420.6881	4280254.094
2067	307383.2493	4280275.939
2068	307346.2593	4280296.209
2069	307335.4393	4280300.509
2070	307326.9393	4280301.289
2071	307318.6193	4280299.149
2072	307312.0793	4280293.649
2073	307308.4293	4280289.109
2074	307308.4293	4280283.029
2075	307311.1093	4280264.909
2076	307315.9493	4280240.669
2077	307316.7192	4280236.799
2078	307325.7493	4280208.209
2079	307326.7493	4280190.399
2080	307321.2292	4280177.609
2081	307305.4993	4280162.269
2082	307294.3192	4280153.119
2083	307271.0793	4280134.099
2084	307238.2593	4280115.159
2085	307208.1393	4280100.709
2086	307207.4493	4280100.379
2087	307201.0493	4280096.459
2088	307197.9693	4280089.549
2089	307197.9893	4280089.199
2090	307198.6493	4280078.329
2091	307202.7793	4280055.669
2092	307202.5992	4280031.639
2093	307200.4747	4280014.092
2094	307199.4693	4280005.789
2095	307193.2793	4279989.199
2096	307184.5114	4279978.374
2097	307179.9793	4279972.779
2098	307164.455	4279964.489
2099	307147.0392	4279955.189
2100	307130.2293	4279939.409



ΑΑ	X	Y
2101	307123.9667	4279933.218
2102	307112.8092	4279922.189
2103	307110.4683	4279920.869
2104	307100.2168	4279915.091
2105	307099.2193	4279914.529
2106	307076.8378	4279911.845
2107	307061.4393	4279909.999
2108	307054.8926	4279909.899
2109	307034.4193	4279909.589
2110	307012.4893	4279907.809
2111	306995.8993	4279908.409
2112	306994.4693	4279908.899
2113	306994.3698	4279908.933
2114	306989.6193	4279910.559
2115	306981.4393	4279913.369
2116	306976.2454	4279918.231
2117	306972.3593	4279921.869
2118	306971.5993	4279922.469
2119	306959.3893	4279932.139
2120	306959.3353	4279932.167
2121	306956.7556	4279934.832
2122	306954.4689	4279934.482
2123	306953.2693	4279934.919
2124	306949.1592	4279935.139
2125	306944.9793	4279933.849
2126	306943.7793	4279933.289
2127	306942.3684	4279932.628
2128	306939.3944	4279931.236
2129	306932.1993	4279927.869
2130	306918.6493	4279920.549
2131	306899.9192	4279907.839
2132	306876.8692	4279888.189
2133	306853.6892	4279862.729
2134	306849.3392	4279857.789
2135	306847.6293	4279854.499
2136	306846.9893	4279849.189
2137	306849.8193	4279843.339
2138	306854.1593	4279831.339
2139	306855.6893	4279813.479
2140	306856.6393	4279800.229
2141	306856.1493	4279797.889
2142	306855.7093	4279795.789
2143	306853.9593	4279787.429
2144	306850.0793	4279775.949
2145	306840.4293	4279762.999
2146	306822.9493	4279753.879
2147	306806.3669	4279749.403
2148	306788.5198	4279746.816
2149	306784.9788	4279746.61
2150	306765.4832	4279749.286

ΑΑ	X	Y
2151	306698.3858	4279782.387
2152	306654.5488	4279793.123
2153	306646.4849	4279791.72
2154	306633.9722	4279789.544
2155	306618.146	4279781.12
2156	306613.13	4279778.451
2157	306523.0378	4279730.498
2158	306408.0239	4279686.639
2159	306388.2761	4279679.108
2160	306346.6163	4279663.222
2161	306285.7813	4279626.542
2162	306221.3678	4279584.494
2163	306165.9005	4279562.128
2164	306138.4671	4279556.985
2165	306136.5016	4279557.096
2166	306119.1993	4279558.079
2167	306092.8293	4279567.089
2168	306057.3993	4279595.699
2169	306049.4931	4279599.791
2170	306044.9192	4279602.159
2171	306029.6993	4279606.749
2172	306010.2193	4279603.959
2173	305983.2293	4279592.229
2174	305966.9693	4279581.169
2175	305950.5393	4279565.919
2176	305942.0192	4279540.849
2177	305935.1541	4279511.955
2178	305931.4792	4279496.489
2179	305915.6493	4279457.059
2180	305897.5793	4279379.719
2181	305879.9593	4279348.989
2182	305857.3192	4279334.289
2183	305836.2793	4279332.479
2184	305811.9693	4279340.839
2185	305798.7892	4279355.529
2186	305796.1468	4279359.877
2187	305793.1193	4279364.859
2188	305789.0992	4279369.979
2189	305783.5393	4279370.869
2190	305778.8893	4279370.479
2191	305774.8893	4279368.929
2192	305773.8093	4279368.019
2193	305770.9193	4279360.399
2194	305769.5208	4279357.75
2195	305760.0993	4279339.909
2196	305749.2665	4279332.902
2197	305740.7893	4279327.419
2198	305719.3092	4279318.319
2199	305708.408	4279317.811
2200	305694.1793	4279317.149



ΑΑ	Χ	Υ
2201	305686.9036	4279317.471
2202	305671.1893	4279318.169
2203	305659.6109	4279321.581
2204	305638.6193	4279327.769
2205	305629.7892	4279329.769
2206	305626.4793	4279326.439
2207	305636.6702	4279293.978
2208	305638.696	4279289.041
2209	305666.1892	4279234.619
2210	305682.7593	4279188.029
2211	305686.6693	4279145.179
2212	305684.9293	4279074.049
2213	305676.8893	4279008.279
2214	305669.7592	4278976.589
2215	305658.7393	4278960.259
2216	305652.2772	4278951.777
2217	305651.2192	4278950.389
2218	305649.0593	4278942.779
2219	305650.0793	4278928.289
2220	305650.7215	4278892.965
2221	305650.7692	4278890.339
2222	305644.3093	4278864.389
2223	305627.1593	4278833.489
2224	305610.8392	4278810.579
2225	305598.4893	4278784.509
2226	305594.0393	4278760.879
2227	305585.6693	4278740.979
2228	305571.8093	4278721.379
2229	305551.3392	4278712.439
2230	305526.9693	4278708.799
2231	305522.6393	4278708.159
2232	305494.9393	4278706.769
2233	305468.5893	4278717.269
2234	305454.2593	4278739.499
2235	305438.9293	4278777.809
2236	305422.6893	4278832.249
2237	305413.9292	4278873.661
2238	305413.6293	4278875.079
2239	305411.4892	4278884.239
2240	305409.1893	4278886.999
2241	305396.9692	4278895.949
2242	305372.1793	4278910.439
2243	305367.0968	4278911.967
2244	305355.6294	4278915.415
2245	305348.4693	4278917.569
2246	305340.7993	4278915.599
2247	305323.9229	4278903.633
2248	305301.5893	4278887.799
2249	305269.7193	4278886.419
2250	305254.1093	4278882.189

ΑΑ	Χ	Υ
2251	305234.0093	4278867.549
2252	305212.4993	4278849.969
2253	305187.3192	4278840.929
2254	305161.3793	4278835.169
2255	305136.9893	4278825.559
2256	305098.9893	4278819.819
2257	305079.0938	4278824.989
2258	305077.4582	4278825.414
2259	305069.8993	4278827.379
2260	305049.2393	4278840.389
2261	305039.5593	4278846.479
2262	305035.1418	4278848.747
2263	305031.769	4278850.479
2264	304971.3784	4278870.106
2265	304970.6586	4278870.302
2266	304865.2556	4278893.725
2267	304850.254	4278897.059
2268	304834.9642	4278895.02
2269	304830.2676	4278894.394
2270	304800.5105	4278890.426
2271	304796.5761	4278889.902
2272	304772.421	4278863.063
2273	304772.5874	4278860.999
2274	304776.8942	4278807.595
2275	304778.6034	4278803.953
2276	304782.8528	4278794.897
2277	304831.4668	4278691.293
2278	304857.8536	4278658.384
2279	304867.857	4278647.841
2280	304969.5893	4278540.629
2281	304992.7292	4278521.309
2282	305013.5493	4278501.859
2283	305036.7192	4278477.549
2284	305080.8093	4278432.149
2285	305094.8093	4278397.389
2286	305097.0093	4278371.329
2287	305089.6993	4278348.979
2288	305071.3793	4278327.529
2289	305066.8893	4278320.679
2290	305063.1392	4278314.959
2291	305062.1993	4278312.979
2292	305053.2693	4278294.309
2293	305036.8293	4278259.909
2294	305021.4631	4278246.205
2295	305019.3396	4278242.188
2296	305015.9287	4278241.272
2297	305006.1393	4278232.549
2298	304964.7593	4278225.209
2299	304933.5493	4278229.149
2300	304913.8693	4278232.419



ΑΑ	Χ	Υ
2301	304878.5093	4278242.269
2302	304843.8093	4278253.379
2303	304821.8193	4278262.489
2304	304800.6148	4278271.571
2305	304790.4892	4278275.909
2306	304788.5193	4278275.979
2307	304783.9593	4278274.279
2308	304775.6993	4278268.649
2309	304771.5193	4278262.129
2310	304768.7452	4278253.798
2311	304751.9992	4278203.509
2312	304731.9347	4278121.884
2313	304729.8365	4278111.392
2314	304729.1012	4278110.356
2315	304724.6993	4278092.449
2316	304710.3892	4278070.319
2317	304694.5193	4278060.019
2318	304679.2693	4278049.289
2319	304663.2093	4278038.609
2320	304662.0893	4278037.859
2321	304647.4893	4278025.379
2322	304633.8593	4278012.619
2323	304616.4293	4277993.039
2324	304615.9093	4277991.769
2325	304607.0981	4277970.572
2326	304604.671	4277964.733
2327	304603.6093	4277962.179
2328	304592.4693	4277921.179
2329	304589.0993	4277911.719
2330	304578.9793	4277883.369
2331	304568.5492	4277862.309
2332	304544.9993	4277847.859
2333	304519.4993	4277844.909
2334	304497.7193	4277851.939
2335	304479.3792	4277871.359
2336	304461.5693	4277904.559
2337	304453.6893	4277923.939
2338	304447.8693	4277928.339
2339	304435.8693	4277933.519
2340	304425.2292	4277933.449
2341	304405.5192	4277929.439
2342	304399.0914	4277925.155
2343	304394.5481	4277918.845
2344	304393.9193	4277906.979
2345	304402.7193	4277846.969
2346	304402.8593	4277791.039
2347	304402.3293	4277759.819
2348	304399.5993	4277731.379
2349	304390.9692	4277677.419
2350	304386.5346	4277663.971

ΑΑ	Χ	Υ
2351	304382.6393	4277652.159
2352	304375.9695	4277645.497
2353	304366.5593	4277636.099
2354	304349.2793	4277623.869
2355	304330.8893	4277606.339
2356	304308.9393	4277576.599
2357	304286.2492	4277552.919
2358	304264.6193	4277541.389
2359	304244.3293	4277537.379
2360	304210.8392	4277537.149
2361	304186.2693	4277526.209
2362	304165.3493	4277515.809
2363	304144.6292	4277501.079
2364	304132.4371	4277483.946
2365	304121.9992	4277471.751
2366	304108.1392	4277456.549
2367	304085.8293	4277442.559
2368	304072.6392	4277431.799
2369	304057.7793	4277418.009
2370	304042.4493	4277383.239
2371	304035.6741	4277369.63
2372	304026.2593	4277350.719
2373	304007.0793	4277311.139
2374	304006.5993	4277309.329
2375	303997.9793	4277277.319
2376	303984.0493	4277236.859
2377	303980.9178	4277220.616
2378	303980.4093	4277217.979
2379	303978.6193	4277208.679
2380	303977.5293	4277181.739
2381	303979.1393	4277135.889
2382	303980.4671	4277112.461
2383	303981.4393	4277095.309
2384	303987.035	4277006.76
2385	303987.1892	4277004.319
2386	303991.0193	4276976.209
2387	303997.458	4276929.024
2388	304001.2165	4276903.387
2389	304011.6593	4276838.589
2390	304014.5062	4276815.237
2391	304014.8193	4276812.669
2392	304017.3393	4276791.939
2393	304018.4793	4276768.829
2394	304010.9393	4276751.629
2395	303999.0393	4276739.379
2396	303979.8693	4276728.569
2397	303964.7093	4276725.489
2398	303943.4993	4276721.189
2399	303901.0693	4276716.179
2400	303840.1593	4276711.639



AA	X	Y
2401	303803.1093	4276706.729
2402	303788.7093	4276703.389
2403	303780.8892	4276699.269
2404	303754.6593	4276670.789
2405	303729.2693	4276638.259
2406	303700.9693	4276619.489
2407	303676.0893	4276607.709
2408	303649.2093	4276580.299
2409	303630.8293	4276552.199
2410	303612.1793	4276513.759
2411	303604.6992	4276475.929
2412	303603.2593	4276445.299
2413	303596.1292	4276383.649
2414	303587.3193	4276333.459
2415	303573.3793	4276286.299
2416	303568.3492	4276267.959
2417	303562.7693	4276247.609
2418	303549.4793	4276219.279
2419	303535.2193	4276203.689
2420	303530.8893	4276198.959
2421	303530.4181	4276198.644
2422	303507.2393	4276183.189
2423	303485.6793	4276181.269
2424	303460.4993	4276181.959
2425	303435.3292	4276181.629
2426	303411.3193	4276175.029
2427	303383.7893	4276164.389
2428	303373.1211	4276160.916
2429	303342.7473	4276149.433
2430	303323.9493	4276138.729
2431	303299.7993	4276121.879
2432	303279.6793	4276103.689
2433	303264.3193	4276087.549
2434	303246.2393	4276064.899
2435	303236.8393	4276046.849
2436	303230.1093	4276033.919
2437	303216.3293	4276009.679
2438	303207.3493	4275993.149
2439	303207.1493	4275992.779
2440	303196.3893	4275979.719
2441	303179.7593	4275969.499
2442	303155.5093	4275956.119
2443	303122.3793	4275943.989
2444	303088.8193	4275932.869
2445	303046.7793	4275920.669
2446	303004.6193	4275911.279
2447	302988.6792	4275903.089
2448	302979.8793	4275894.019
2449	302961.5993	4275866.699
2450	302933.2821	4275833.946

AA	X	Y
2451	302917.9668	4275816.232
2452	302915.8893	4275813.829
2453	302898.1293	4275791.079
2454	302858.9485	4275772.787
2455	302841.5661	4275764.672
2456	302810.9493	4275750.379
2457	302773.7943	4275733.9
2458	302763.9592	4275729.539
2459	302718.4193	4275730.969
2460	302710.9093	4275732.269
2461	302679.5493	4275737.849
2462	302653.4127	4275748.784
2463	302648.5493	4275750.819
2464	302636.1618	4275761.016
2465	302618.6166	4275775.46
2466	302617.6795	4275776.83
2467	302604.7106	4275801.619
2468	302603.654	4275803.638
2469	302600.458	4275809.747
2470	302596.257	4275817.777
2471	302595.0061	4275820.168
2472	302588.0893	4275833.389
2473	302561.8393	4275895.529
2474	302557.0793	4275930.219
2475	302555.5193	4275941.629
2476	302552.6493	4275962.499
2477	302551.2893	4275989.219
2478	302551.2693	4275989.759
2479	302548.1793	4276007.399
2480	302540.9992	4276018.469
2481	302528.8046	4276021.083
2482	302528.325	4276021.531
2483	302528.0109	4276021.254
2484	302525.0493	4276021.889
2485	302511.9493	4276015.619
2486	302501.6993	4276001.949
2487	302469.7993	4275971.769
2488	302449.2893	4275957.529
2489	302413.9693	4275943.859
2490	302384.4393	4275930.879
2491	302359.9317	4275927.981
2492	302349.5093	4275926.749
2493	302335.2793	4275928.549
2494	302322.8813	4275930.12
2495	302319.2593	4275930.579
2496	302287.5092	4275939.469
2497	302272.3893	4275947.609
2498	302266.8692	4275950.579
2499	302255.6493	4275958.059
2500	302250.6792	4275961.369



ΑΑ	X	Y
2501	302230.9393	4275977.259
2502	302223.2493	4275982.769
2503	302207.4393	4275994.089
2504	302206.3393	4275994.479
2505	302200.9629	4275996.381
2506	302181.3293	4276003.329
2507	302160.0593	4276005.549
2508	302141.2693	4276004.319
2509	302140.6893	4276004.279
2510	302136.2256	4276002.529
2511	302124.4893	4275997.929
2512	302116.8693	4275989.989
2513	302114.9593	4275976.979
2514	302120.6793	4275959.509
2515	302123.2389	4275946.044
2516	302124.3293	4275940.309
2517	302124.6193	4275938.749
2518	302123.1793	4275920.039
2519	302116.7093	4275896.649
2520	302102.7893	4275862.509
2521	302093.6093	4275839.999
2522	302080.7693	4275771.379
2523	302070.883	4275718.404
2524	302069.697	4275703.325
2525	302066.3614	4275695.776
2526	302052.8493	4275656.089
2527	302042.1892	4275616.619
2528	302042.0222	4275615.99
2529	302042.7527	4275610.39
2530	302046.1583	4275588.313
2531	302052.2345	4275554.894
2532	302052.6648	4275550.268
2533	302053.4052	4275542.308
2534	302054.5474	4275530.03
2535	302055.4095	4275520.763
2536	302037.947	4275489.013
2537	302035.6102	4275473.239
2538	302035.4293	4275471.509
2539	302035.0493	4275467.809
2540	302034.4335	4275465.296
2541	302032.3207	4275451.035
2542	302031.597	4275446.15
2543	302022.0777	4275433.124
2544	302020.6193	4275430.469
2545	302013.7293	4275417.909
2546	302013.0093	4275417.219
2547	302009.923	4275414.266
2548	302003.0219	4275402.494
2549	301980.7969	4275389.794
2550	301971.0089	4275387.299

ΑΑ	X	Y
2551	301970.2793	4275386.919
2552	301960.9634	4275382.074
2553	301956.0293	4275379.509
2554	301950.4503	4275377.684
2555	301940.1905	4275374.329
2556	301934.8093	4275372.569
2557	301924.5142	4275373.046
2558	301908.2892	4275373.799
2559	301882.1793	4275382.769
2560	301876.0427	4275386.79
2561	301857.9793	4275398.629
2562	301810.302	4275433.602
2563	301794.3293	4275445.319
2564	301767.9393	4275472.869
2565	301748.7792	4275487.379
2566	301684.1293	4275527.339
2567	301627.8344	4275587.229
2568	301624.6392	4275590.629
2569	301601.0804	4275621.666
2570	301586.2693	4275641.179
2571	301560.9393	4275688.419
2572	301552.0893	4275704.929
2573	301544.2693	4275713.839
2574	301532.0693	4275727.749
2575	301511.7153	4275736.125
2576	301504.0293	4275739.289
2577	301500.4493	4275739.889
2578	301474.3393	4275744.239
2579	301474.2593	4275744.239
2580	301468.1815	4275744.381
2581	301438.8693	4275745.069
2582	301410.2293	4275739.309
2583	301409.3655	4275739.13
2584	301374.4093	4275731.899
2585	301374.3593	4275731.889
2586	301340.5493	4275731.059
2587	301317.8284	4275741.95
2588	301307.1493	4275747.069
2589	301264.0293	4275766.669
2590	301255.0402	4275766.669
2591	301241.6793	4275766.669
2592	301222.8293	4275753.269
2593	301204.0093	4275706.619
2594	301191.8593	4275658.799
2595	301191.7147	4275649.012
2596	301188.3947	4275619.188
2597	301194.7447	4275571.563
2598	301210.9747	4275516.971
2599	301215.4776	4275506.964
2600	301220.0992	4275498.682



AA	X	Y
2601	301234.3529	4275473.138
2602	301234.7744	4275466.605
2603	301237.4447	4275425.215
2604	301237.5279	4275423.925
2605	301231.1779	4275365.187
2606	301211.6437	4275295.646
2607	301211.4693	4275289.039
2608	301212.825	4275258.592
2609	301214.4792	4275221.439
2610	301222.7293	4275193.979
2611	301236.1281	4275173.047
2612	301248.6404	4275161.193
2613	301252.466	4275154.613
2614	301255.1285	4275150.034
2615	301268.4842	4275127.062
2616	301275.922	4275108.467
2617	301284.6278	4275086.703
2618	301291.3093	4275075.029
2619	301293.5313	4275071.147
2620	301297.5883	4275064.06
2621	301302.4493	4275055.569
2622	301308.045	4275044.705
2623	301315.8748	4275030.993
2624	301362.5438	4274949.261
2625	301395.0876	4274842.105
2626	301414.9314	4274804.799
2627	301434.7752	4274788.924
2628	301449.8564	4274795.274
2629	301461.3053	4274817.713
2630	301473.2953	4274835.579
2631	301474.1173	4274836.803
2632	301506.002	4274855.873
2633	301506.9043	4274856.365
2634	301527.4124	4274870.179
2635	301529.273	4274871.178
2636	301532.4315	4274872.712
2637	301534.8761	4274874.187
2638	301574.9494	4274888.863
2639	301577.2925	4274889.705
2640	301580.3016	4274890.768
2641	301582.7458	4274891.267
2642	301622.8194	4274909.676
2643	301624.5459	4274910.383
2644	301627.1347	4274910.71
2645	301631.5748	4274911.27
2646	301636.5118	4274911.375
2647	301678.933	4274912.362
2648	301680.4277	4274912.497
2649	301683.8811	4274912.317
2650	301686.5842	4274912.07

AA	X	Y
2651	301689.2843	4274911.822
2652	301749.4486	4274909.885
2653	301753.9442	4274909.708
2654	301756.2224	4274909.271
2655	301794.3181	4274895.358
2656	301795.4054	4274895.21
2657	301797.9385	4274894.866
2658	301801.9903	4274892.629
2659	301847.42	4274873.507
2660	301848.7612	4274872.731
2661	301852.0878	4274869.824
2662	301853.7405	4274868.573
2663	301881.1414	4274834.898
2664	301895.7439	4274783.391
2665	301900.176	4274747.307
2666	301889.8594	4274672.154
2667	301843.2926	4274556.443
2668	301762.8591	4274435.087
2669	301677.2046	4274368.764
2670	301634.8712	4274312.32
2671	301606.6489	4274186.731
2672	301613.7045	4274120.408
2673	301650.3935	4274062.553
2674	301685.6713	4273997.642
2675	301675.7935	4273931.319
2676	301636.2823	4273831.13
2677	301651.8046	4273691.43
2678	301661.0482	4273674.098
2679	301668.3494	4273660.408
2680	301687.074	4273626.371
2681	301736.4714	4273571.485
2682	301738.4086	4273559.308
2683	301740.4314	4273546.594
2684	301744.2843	4273522.375
2685	301746.3492	4273509.396
2686	301773.1604	4273469.885
2687	301764.6937	4273413.44
2688	301759.6342	4273396.364
2689	301742.1159	4273337.24
2690	301783.0382	4273255.396
2691	301849.3605	4273227.173
2692	301902.9829	4273165.084
2693	301982.7108	4273046.551
2694	302043.3887	4272973.173
2695	302071.611	4272881.45
2696	302084.311	4272751.628
2697	302054.6776	4272654.261
2698	301978.4775	4272528.672
2699	301961.5441	4272412.961
2700	301965.7774	4272315.594



ΑΑ	Χ	Υ
2701	302006.6997	4272223.871
2702	302051.8554	4272122.271
2703	302058.9109	4272046.071
2704	302025.0442	4271972.693
2705	301995.4108	4271912.015
2706	302026.4553	4271845.693
2707	302081.4888	4271766.67
2708	302126.6444	4271666.481
2709	302153.4556	4271567.703
2710	302171.7142	4271514.884
2711	302192.9668	4271453.403
2712	302207.0985	4271438.486
2713	302272.2353	4271441.675
2714	302288.9225	4271446.348
2715	302304.2858	4271454.347
2716	302362.5473	4271484.685
2717	302365.878	4271502.226
2718	302366.3629	4271504.78
2719	302367.6895	4271511.767
2720	302387.9683	4271526.586
2721	302422.7229	4271551.984
2722	302453.9419	4271581.833
2723	302458.7406	4271586.421
2724	302464.2843	4271587.657
2725	302470.4773	4271588.427
2726	302532.0252	4271607.479
2727	302538.2245	4271607.506
2728	302587.8232	4271610.891
2729	302592.2989	4271609.225
2730	302634.2401	4271590.34
2731	302660.3656	4271565.78
2732	302661.8347	4271563.57
2733	302671.6128	4271548.713
2734	302693.1179	4271514.233
2735	302705.78	4271491.682
2736	302719.2567	4271448.775
2737	302720.9786	4271434.214
2738	302725.7477	4271393.884
2739	302721.5693	4271335.319
2740	302716.1793	4271301.399
2741	302713.5693	4271285.029
2742	302713.2393	4271280.149
2743	302713.9993	4271195.999
2744	302717.0508	4271183.793
2745	302719.3293	4271174.679
2746	302725.9993	4271147.999
2747	302735.9693	4271110.589
2748	302735.9693	4271109.329
2749	302745.2093	4271052.629
2750	302751.1993	4271034.949

ΑΑ	Χ	Υ
2751	302794.4409	4270906.36
2752	302819.1685	4270833.021
2753	302839.1288	4270785.56
2754	302839.3961	4270784.016
2755	302850.1623	4270753.418
2756	302863.4989	4270738.562
2757	302890.1258	4270730.596
2758	302890.6709	4270729.911
2759	302893.6677	4270727.026
2760	302911.9706	4270718.072
2761	302912.7662	4270717.82
2762	302914.8273	4270717.287
2763	302917.8062	4270715.709
2764	302922.3171	4270714.441
2765	302926.465	4270713.207
2766	302973.9742	4270709.431
2767	302974.9506	4270709.304
2768	302996.674	4270707.195
2769	302996.7657	4270707.649
2770	303049.6208	4270694.471
2771	303069.1572	4270688.327
2772	303069.9319	4270687.887
2773	303071.4759	4270687.011
2774	303093.6512	4270680.77
2775	303109.9665	4270676.179
2776	303114.0213	4270676.076
2777	303114.6893	4270676.059
2778	303117.7693	4270675.979
2779	303135.59	4270679.443
2780	303164.3793	4270685.039
2781	303196.6393	4270685.859
2782	303198.8692	4270685.919
2783	303233.9293	4270699.649
2784	303262.795	4270719.277
2785	303270.5241	4270724.533
2786	303282.4293	4270732.629
2787	303288.1293	4270736.509
2788	303325.2493	4270758.139
2789	303375.9093	4270770.159
2790	303420.9193	4270776.289
2791	303437.5692	4270772.199
2792	303454.9693	4270766.039
2793	303461.9993	4270765.719
2794	303465.6092	4270765.629
2795	303492.7193	4270764.959
2796	303516.0593	4270750.239
2797	303531.9593	4270738.599
2798	303534.2893	4270736.979
2799	303541.5193	4270731.959
2800	303545.8179	4270728.991



AA	X	Y
2801	303549.6593	4270726.339
2802	303552.6793	4270724.259
2803	303558.7093	4270721.959
2804	303567.4793	4270718.629
2805	303580.0769	4270712.763
2806	303582.8793	4270711.459
2807	303600.7693	4270703.199
2808	303616.3792	4270694.169
2809	303616.5993	4270693.969
2810	303625.1993	4270685.849
2811	303636.5093	4270675.169
2812	303667.5892	4270629.729
2813	303686.3879	4270601.789
2814	303690.2429	4270597.471
2815	303702.5099	4270576.93
2816	303706.9292	4270570.109
2817	303707.7653	4270568.131
2818	303722.6792	4270532.849
2819	303729.6493	4270508.139
2820	303731.1193	4270493.349
2821	303732.5593	4270478.779
2822	303735.1393	4270467.649
2823	303736.0793	4270465.249
2824	303737.3393	4270461.999
2825	303737.5593	4270455.599
2826	303738.0993	4270439.489
2827	303733.0793	4270420.139
2828	303728.3993	4270409.519
2829	303723.4093	4270398.179
2830	303709.1987	4270382.172
2831	303701.4193	4270373.409
2832	303672.8493	4270354.069
2833	303646.6693	4270344.539
2834	303628.7486	4270342.018
2835	303599.9713	4270328.765
2836	303589.9093	4270323.679
2837	303581.5493	4270319.449
2838	303577.9035	4270318.602
2839	303560.7393	4270314.619
2840	303557.5893	4270314.419
2841	303550.9651	4270313.989
2842	303544.4141	4270313.564
2843	303537.3892	4270313.109
2844	303519.1093	4270304.219
2845	303514.0693	4270301.959
2846	303511.5093	4270300.809
2847	303501.5993	4270296.359
2848	303485.8693	4270286.969
2849	303471.1393	4270269.979
2850	303466.8193	4270249.679

AA	X	Y
2851	303469.3693	4270235.719
2852	303476.7193	4270215.679
2853	303479.2593	4270192.589
2854	303478.7993	4270185.649
2855	303478.6613	4270183.608
2856	303477.9993	4270173.819
2857	303476.2714	4270164.83
2858	303471.1449	4270118.691
2859	303472.1193	4270106.849
2860	303468.7693	4270047.529
2861	303452.0393	4270016.809
2862	303442.3885	4270008.747
2863	303432.2343	4270000.265
2864	303383.9469	4269951.978
2865	303345.4546	4269929.082
2866	303321.1728	4269914.638
2867	303241.1126	4269867.016
2868	303229.1426	4269850.564
2869	303227.082	4269847.732
2870	303217.9993	4269835.249
2871	303215.7693	4269832.169
2872	303200.4865	4269817.43
2873	303186.1625	4269803.616
2874	303170.5493	4269788.559
2875	303152.8493	4269775.809
2876	303138.6993	4269755.579
2877	303139.1293	4269741.539
2878	303146.655	4269736.083
2879	303153.0893	4269731.419
2880	303182.2762	4269697.038
2881	303177.9323	4269691.63
2882	303150.4793	4269676.339
2883	303133.0093	4269673.459
2884	303066.0393	4269650.719
2885	303057.1461	4269647.7
2886	303049.0393	4269644.949
2887	303023.9093	4269629.079
2888	303013.9893	4269620.489
2889	303008.0393	4269611.229
2890	303011.0392	4269587.089
2891	303011.0393	4269570.339
2892	303014.1793	4269556.799
2893	303019.7793	4269533.069
2894	303023.6293	4269515.159
2895	303028.4993	4269493.899
2896	303035.5293	4269475.599
2897	303047.9293	4269449.199
2898	303052.8292	4269438.589
2899	303058.299	4269430.444
2900	303066.0193	4269418.949



ΑΑ	Χ	Υ
2901	303083.3693	4269394.559
2902	303092.1193	4269383.759
2903	303102.3193	4269374.019
2904	303110.9093	4269368.059
2905	303110.6493	4269366.259
2906	303134.0693	4269348.199
2907	303163.5593	4269317.789
2908	303169.8793	4269312.179
2909	303194.6593	4269271.909
2910	303219.2593	4269249.389
2911	303251.8393	4269220.629
2912	303266.4993	4269208.149
2913	303280.6093	4269195.669
2914	303287.6693	4269189.159
2915	303290.3893	4269177.759
2916	303335.9125	4269063.912
2917	303342.4749	4269047.808
2918	303364.7678	4269017.019
2919	303419.2603	4269009.538
2920	303490.0092	4268997.949
2921	303511.8479	4268986.075
2922	303554.884	4268973.407
2923	303603.5796	4268959.739
2924	303606.2043	4268958.862
2925	303628.4601	4268951.425
2926	303642.3829	4268936.504
2927	303648.3132	4268923.585
2928	303648.7933	4268922.539
2929	303650.275	4268903.277
2930	303651.0411	4268893.318
2931	303646.9363	4268720.92
2932	303641.8054	4268673.715
2933	303567.9921	4268529.718
2934	303567.3208	4268525.294
2935	303565.2319	4268497.674
2936	303562.9119	4268466.998
2937	303559.7911	4268425.735
2938	303553.3405	4268340.444
2939	303545.7051	4268239.487
2940	303406.3721	4268061.842
2941	303394.8156	4267932.962
2942	303420.0774	4267864.02
2943	303437.466	4267831.962
2944	303421.3655	4267766.901
2945	303419.33	4267758.677
2946	303411.722	4267727.933
2947	303421.042	4267726.388
2948	303424.2376	4267725.858
2949	303422.5278	4267725.032
2950	303434.0693	4267714.499

ΑΑ	Χ	Υ
2951	303451.0493	4267698.779
2952	303461.2493	4267689.299
2953	303464.2689	4267684.178
2954	303476.9193	4267665.599
2955	303487.5493	4267653.559
2956	303508.1493	4267637.669
2957	303526.4393	4267598.779
2958	303534.4396	4267583.132
2959	303542.5991	4267567.175
2960	303547.4293	4267557.729
2961	303553.3293	4267511.069
2962	303550.8543	4267507.895
2963	303529.6693	4267480.729
2964	303522.6584	4267454.452
2965	303518.9493	4267394.169
2966	303491.2693	4267284.609
2967	303475.1993	4267237.309
2968	303451.9393	4267162.079
2969	303441.0013	4267122.659
2970	303432.7493	4267092.919
2971	303448.1293	4267032.209
2972	303448.0793	4267029.439
2973	303447.8593	4267017.319
2974	303449.3293	4266992.939
2975	303449.8193	4266949.339
2976	303445.2193	4266912.579
2977	303433.8193	4266887.269
2978	303421.3293	4266854.979
2979	303391.4693	4266817.199
2980	303366.4693	4266796.189
2981	303347.9893	4266786.039
2982	303342.7893	4266750.269
2983	303331.6793	4266729.109
2984	303314.1993	4266709.559
2985	303309.7493	4266696.769
2986	303309.4493	4266682.759
2987	303311.0693	4266677.739
2988	303326.2937	4266652.433
2989	303330.8328	4266635.948
2990	303332.9993	4266618.919
2991	303332.3493	4266611.819
2992	303329.7692	4266597.619
2993	303323.9493	4266591.809
2994	303330.2993	4266560.939
2995	303336.0593	4266545.749
2996	303338.6793	4266538.839
2997	303340.0793	4266522.349
2998	303336.9193	4266504.099
2999	303331.7793	4266496.449
3000	303340.7793	4266479.369



AA	X	Y
3001	303347.3593	4266455.999
3002	303351.9447	4266432.461
3003	303352.8393	4266427.869
3004	303354.2977	4266426.172
3005	303361.2093	4266418.129
3006	303372.5093	4266416.309
3007	303379.4393	4266410.839
3008	303388.9193	4266399.909
3009	303394.3893	4266383.519
3010	303393.1893	4266355.789
3011	303413.1893	4266320.189
3012	303421.7993	4266293.379
3013	303412.0993	4266235.169
3014	303416.5653	4266194.195
3015	303409.9452	4266158.182
3016	303402.1093	4266147.299
3017	303396.6993	4266134.669
3018	303393.0893	4266123.249
3019	303391.8793	4266111.229
3020	303384.3593	4266091.979
3021	303376.4067	4266087.338
3022	303374.3693	4266086.149
3023	303370.9493	4266068.329
3024	303383.7393	4266032.879
3025	303384.0092	4266032.129
3026	303387.6325	4266025.093
3027	303389.8259	4266012.932
3028	303401.1502	4265998.71
3029	303442.0849	4265947.304
3030	303449.2964	4265868.253
3031	303475.9516	4265813.719
3032	303476.5163	4265792.472
3033	303477.2561	4265764.636
3034	303478.6157	4265713.481
3035	303478.8982	4265702.855
3036	303479.2619	4265689.169
3037	303491.5493	4265650.299
3038	303502.8292	4265643.399
3039	303510.5993	4265631.999
3040	303516.5593	4265616.539
3041	303530.9093	4265582.829
3042	303558.0693	4265519.369
3043	303557.3393	4265449.849
3044	303539.0628	4265406.99
3045	303514.0574	4265348.351
3046	303510.1249	4265339.129
3047	303508.9725	4265336.426
3048	303509.0171	4265334.46
3049	303510.0593	4265288.499
3050	303564.9593	4265220.369

AA	X	Y
3051	303583.6993	4265210.489
3052	303590.6493	4265179.649
3053	303605.7993	4265160.559
3054	303614.6993	4265125.179
3055	303595.7893	4265105.669
3056	303594.2393	4265096.959
3057	303588.3293	4265086.029
3058	303581.3793	4265081.399
3059	303573.6393	4265070.119
3060	303569.0693	4265062.089
3061	303571.0393	4265051.699
3062	303571.9093	4265043.999
3063	303546.2693	4265035.639
3064	303551.6093	4265016.889
3065	303544.2793	4265007.559
3066	303536.6193	4264977.909
3067	303527.2793	4264948.599
3068	303509.6193	4264929.939
3069	303491.9593	4264925.609
3070	303481.9593	4264933.599
3071	303471.9593	4264956.919
3072	303467.6193	4264991.259
3073	303461.7193	4265022.379
3074	303456.3493	4265045.979
3075	303452.2193	4265051.569
3076	303439.7093	4265068.509
3077	303422.5393	4265080.849
3078	303396.7793	4265077.089
3079	303384.4393	4265054.559
3080	303383.2588	4265034.825
3081	303382.2893	4265018.619
3082	303384.8584	4265002.969
3083	303355.4422	4264932.925
3084	303352.2485	4264929.253
3085	303294.136	4264846.018
3086	303292.7183	4264846.057
3087	303289.0845	4264842.739
3088	303274.1913	4264806.327
3089	303279.2464	4264796.563
3090	303278.9264	4264789.014
3091	303274.474	4264745.562
3092	303273.2984	4264734.09
3093	303279.7823	4264697.988
3094	303316.1356	4264653.715
3095	303333.3193	4264616.048
3096	303335.4088	4264597.366
3097	303339.5925	4264559.961
3098	303332.2515	4264491.097
3099	303329.3391	4264471.771
3100	303327.0979	4264456.899



AA	X	Y
3101	303325.8373	4264448.533
3102	303330.6637	4264423.186
3103	303332.8618	4264386.547
3104	303334.6057	4264383.88
3105	303336.8443	4264337.209
3106	303333.648	4264320.13
3107	303323.5671	4264306.647
3108	303323.7103	4264305.637
3109	303323.2495	4264304.608
3110	303317.9976	4264292.878
3111	303308.8679	4264281.948
3112	303309.7878	4264270.966
3113	303310.1637	4264268.603
3114	303310.3136	4264267.661
3115	303311.9844	4264259.705
3116	303312.6846	4264257.841
3117	303312.9768	4264255.995
3118	303314.1795	4264238.365
3119	303313.6677	4264236.607
3120	303308.4613	4264234.542
3121	303306.8721	4264234.586
3122	303304.8105	4264235.083
3123	303302.9935	4264236.457
3124	303289.5963	4264242.6
3125	303288.7958	4264242.622
3126	303287.112	4264243.115
3127	303274.262	4264249.765
3128	303273.4143	4264256.162
3129	303273.2344	4264257.084
3130	303270.6003	4264266.411
3131	303260.8777	4264266.212
3132	303246.4633	4264257.817
3133	303236.5653	4264237.064
3134	303237.5185	4264233.049
3135	303237.5222	4264232.056
3136	303243.25	4264224.535
3137	303242.1026	4264212.675
3138	303251.4666	4264200.359
3139	303309.1498	4264141.759
3140	303309.4903	4264141.414
3141	303317.5989	4264130.031
3142	303319.9521	4264126.727
3143	303327.5399	4264118.386
3144	303328.2345	4264117.893
3145	303351.0411	4264096.967
3146	303351.9477	4264096.065
3147	303359.7468	4264087.721
3148	303363.6031	4264083.596
3149	303371.3374	4264075.322
3150	303374.3472	4264068.773

AA	X	Y
3151	303376.8606	4264063.304
3152	303408.8043	4264032.83
3153	303427.0622	4264019.224
3154	303446.843	4264007.731
3155	303447.1911	4264007.529
3156	303461.9456	4264001.593
3157	303462.4443	4264001.579
3158	303476.5175	4263994.635
3159	303477.0165	4263994.125
3160	303500.6816	4263980.334
3161	303510.198	4263976.748
3162	303523.0622	4263971.901
3163	303544.1349	4263956.453
3164	303557.3301	4263948.158
3165	303574.3593	4263932.156
3166	303577.699	4263923.722
3167	303578.0791	4263913.41
3168	303576.8748	4263905.532
3169	303567.658	4263888.811
3170	303562.4574	4263880.296
3171	303562.9229	4263864.66
3172	303563.1608	4263856.669
3173	303563.1993	4263854.619
3174	303551.8293	4263816.069
3175	303529.6193	4263779.629
3176	303527.5093	4263757.559
3177	303521.4593	4263722.239
3178	303520.1891	4263682.225
3179	303520.752	4263678.077
3180	303520.9397	4263676.695
3181	303524.5727	4263610.987
3182	303531.5416	4263544.55
3183	303531.8376	4263541.728
3184	303522.3126	4263438.064
3185	303532.0461	4263345.971
3186	303532.6314	4263340.433
3187	303546.9189	4263262.804
3188	303538.055	4263233.475
3189	303454.05	4263205.654
3190	303388.1686	4263174.697
3191	303355.0956	4263149.403
3192	303337.1039	4263126.12
3193	303329.0532	4263105.463
3194	303329.0092	4263105.35
3195	303327.0497	4263100.323
3196	303323.8954	4263086.354
3197	303323.9363	4263085.799
3198	303322.6789	4263080.966
3199	303321.4935	4263075.717
3200	303323.9916	4263065.1



AA	X	Y
3201	303327.8435	4263048.729
3202	303332.7613	4263021.114
3203	303338.1623	4262990.785
3204	303337.8132	4262984.036
3205	303335.781	4262944.748
3206	303336.5747	4262895.694
3207	303326.256	4262875.85
3208	303295.2997	4262861.562
3209	303289.1549	4262858.304
3210	303267.3635	4262846.75
3211	303261.1683	4262843.465
3212	303247.1771	4262840.519
3213	303231.0058	4262837.115
3214	303204.3882	4262805.545
3215	303196.8745	4262796.634
3216	303175.2962	4262772.481
3217	303166.1955	4262762.295
3218	303152.6697	4262747.156
3219	303099.7193	4262687.89
3220	303087.6347	4262675.06
3221	303080.8551	4262667.863
3222	303073.5349	4262660.092
3223	303043.0454	4262627.723
3224	303027.1704	4262600.18
3225	303016.0579	4262550.967
3226	303022.8632	4262492.984
3227	303026.2379	4262483.885
3228	303044.6329	4262434.286
3229	303058.0859	4262412.761
3230	303076.383	4262383.486
3231	303083.1697	4262365.501
3232	303083.8376	4262363.731
3233	303095.433	4262333.003
3234	303111.308	4262307.603
3235	303113.7258	4262302.768
3236	303125.5956	4262279.028
3237	303125.5983	4262279.002
3238	303130.3581	4262232.991
3239	303119.1216	4262214.392
3240	303117.7389	4262212.104
3241	303107.3393	4262194.89
3242	303106.8277	4262193.867
3243	303097.0205	4262174.253
3244	303095.3736	4262151.323
3245	303093.2242	4262121.396
3246	303090.0554	4262077.277
3247	303090.6793	4262072.559
3248	303090.0462	4262061.8
3249	303090.0407	4262061.707
3250	303089.1593	4262046.729

AA	X	Y
3251	303086.9511	4262034.056
3252	303086.7017	4262030.584
3253	303081.9392	4262000.659
3254	303073.9684	4261953.741
3255	303058.9204	4261865.166
3256	303058.9204	4261850.56
3257	303055.9893	4261818.439
3258	303054.3751	4261811.987
3259	303050.1793	4261795.219
3260	303048.4393	4261787.679
3261	303046.1193	4261768.529
3262	303044.9593	4261758.079
3263	303037.4093	4261748.789
3264	303026.1793	4261742.919
3265	303023.1493	4261741.329
3266	303015.1093	4261734.019
3267	303008.5293	4261728.909
3268	303002.6773	4261723.339
3269	302992.1513	4261703.895
3270	302990.1568	4261700.211
3271	302965.2578	4261664.585
3272	302946.2705	4261651.352
3273	302939.064	4261646.329
3274	302935.3497	4261644.866
3275	302922.2064	4261639.688
3276	302912.8702	4261636.01
3277	302911.7255	4261633.778
3278	302898.4586	4261607.906
3279	302896.8648	4261589.078
3280	302896.2014	4261581.241
3281	302889.0576	4261544.729
3282	302885.3889	4261528.22
3283	302881.2052	4261509.393
3284	302876.0401	4261486.15
3285	302860.165	4261451.225
3286	302848.9476	4261430.644
3287	302812.54	4261420.268
3288	302780.7899	4261392.487
3289	302753.0086	4261371.056
3290	302736.6307	4261365.809
3291	302716.3373	4261359.308
3292	302685.3809	4261334.702
3293	302662.1127	4261310.065
3294	302656.8176	4261304.458
3295	302644.8996	4261291.839
3296	302615.5308	4261256.121
3297	302608.2193	4261238.723
3298	302607.6232	4261237.305
3299	302598.1488	4261214.762
3300	302586.7173	4261187.561



ΑΑ	Χ	Υ
3301	302584.4625	4261183.657
3302	302559.2784	4261140.048
3303	302531.0184	4261091.112
3304	302519.3893	4261071.619
3305	302507.9717	4261051.433
3306	302501.6719	4261040.295
3307	302498.7493	4261035.129
3308	302498.367	4261034.573
3309	302485.3555	4261012.042
3310	302462.6967	4260938.712
3311	302460.2256	4260933.13
3312	302452.2001	4260905.766
3313	302451.3993	4260893.999
3314	302452.5929	4260882.108
3315	302452.9893	4260878.159
3316	302451.3993	4260863.899
3317	302441.7393	4260851.069
3318	302438.0214	4260846.808
3319	302434.5588	4260842.84
3320	302433.5893	4260841.729
3321	302416.5193	4260831.419
3322	302400.6693	4260828.249
3323	302396.0089	4260825.764
3324	302388.7793	4260821.909
3325	302387.5763	4260820.584
3326	302377.5641	4260796.618
3327	302370.402	4260776.221
3328	302367.338	4260767.495
3329	302355.339	4260722.005
3330	302352.1594	4260692.673
3331	302346.4593	4260584.451
3332	302352.3911	4260551.858
3333	302344.8893	4260517.719
3334	302331.5393	4260471.809
3335	302327.2293	4260468.719
3336	302301.0993	4260449.979
3337	302293.2193	4260444.329
3338	302282.7693	4260434.689
3339	302271.5193	4260417.819
3340	302264.2793	4260412.599
3341	302253.0493	4260411.699
3342	302233.1193	4260422.159
3343	302221.7393	4260422.719
3344	302210.3893	4260415.809
3345	302195.0993	4260399.539
3346	302187.9376	4260389.998
3347	302180.2893	4260379.809
3348	302166.9693	4260365.999
3349	302165.2477	4260364.562
3350	302161.0493	4260361.059

ΑΑ	Χ	Υ
3351	302145.2493	4260343.309
3352	302138.3493	4260331.959
3353	302128.4793	4260321.609
3354	302117.2193	4260305.979
3355	302071.8693	4260233.279
3356	302072.8493	4260215.569
3357	302065.352	4260190.733
3358	302064.9793	4260189.499
3359	302064.5677	4260189.135
3360	302058.4559	4260183.73
3361	302052.1793	4260178.179
3362	302042.8293	4260164.899
3363	302034.9493	4260154.079
3364	302029.0493	4260141.289
3365	302021.1693	4260123.089
3366	302018.8092	4260093.942
3367	302018.7693	4260093.449
3368	302014.2793	4260069.959
3369	302006.8993	4260044.869
3370	302005.0117	4260042.002
3371	302004.2393	4260040.829
3372	301996.5593	4260029.129
3373	301978.8493	4260003.059
3374	301969.9893	4259989.779
3375	301963.0993	4259975.509
3376	301965.7293	4259955.719
3377	301959.4417	4259935.13
3378	301958.6593	4259932.569
3379	301951.8093	4259919.719
3380	301950.1893	4259915.769
3381	301940.2393	4259889.739
3382	301936.8093	4259879.029
3383	301934.2393	4259870.039
3384	301925.2393	4259855.909
3385	301923.9093	4259852.139
3386	301920.5939	4259846.208
3387	301903.5493	4259815.719
3388	301901.8593	4259812.109
3389	301898.4093	4259802.089
3390	301894.8893	4259795.679
3391	301889.9593	4259788.199
3392	301885.6793	4259780.169
3393	301880.3193	4259768.499
3394	301861.1335	4259733.843
3395	301857.1393	4259726.629
3396	301851.0938	4259723.112
3397	301850.6857	4259722.874
3398	301846.6493	4259715.479
3399	301839.7993	4259705.149
3400	301840.7793	4259696.969



AA	X	Y
3401	301841.9593	4259694.419
3402	301847.9493	4259681.469
3403	301856.1917	4259674.528
3404	301863.1493	4259668.669
3405	301864.7593	4259662.799
3406	301861.4793	4259657.329
3407	301856.9993	4259654.239
3408	301847.5093	4259651.419
3409	301834.0393	4259644.189
3410	301826.6793	4259643.569
3411	301825.3194	4259648.097
3412	301817.5973	4259645.804
3413	301799.6444	4259640.473
3414	301785.2438	4259614.802
3415	301769.2172	4259586.233
3416	301732.1755	4259529.347
3417	301722.0165	4259515.033
3418	301703.0713	4259488.337
3419	301694.9178	4259471.289
3420	301694.5493	4259451.419
3421	301681.9893	4259425.469
3422	301686.0693	4259408.179
3423	301688.1393	4259385.819
3424	301688.8993	4259377.629
3425	301690.1493	4259335.559
3426	301688.9993	4259288.789
3427	301685.1893	4259275.459
3428	301675.6293	4259266.509
3429	301665.1293	4259256.339
3430	301658.6893	4259250.109
3431	301644.4093	4259229.739
3432	301636.6193	4259220.979
3433	301632.6193	4259216.479
3434	301622.1093	4259204.659
3435	301589.7193	4259190.979
3436	301550.9356	4259168.191
3437	301528.3497	4259135.723
3438	301498.6437	4259085.428
3439	301485.2193	4259051.699
3440	301457.2393	4258979.949
3441	301450.5693	4258961.769
3442	301455.5893	4258895.339
3443	301453.6537	4258883.177
3444	301442.5772	4258813.58
3445	301431.9533	4258790.3
3446	301429.8993	4258785.799
3447	301425.0363	4258771.536
3448	301388.4827	4258673.694
3449	301296.935	4258563.616
3450	301255.6529	4258489.214

AA	X	Y
3451	301218.8828	4258387.668
3452	301206.9765	4258322.845
3453	301183.164	4258277.866
3454	301140.326	4258276.468
3455	301108.9161	4258275.442
3456	301060.7556	4258250.47
3457	300993.805	4258215.755
3458	300981.0518	4258209.143
3459	300967.7337	4258208
3460	300932.501	4258204.978
3461	300913.9113	4258203.384
3462	300791.042	4258192.845
3463	300744.3816	4258188.843
3464	300718.5173	4258186.625
3465	300695.8133	4258175.773
3466	300658.4037	4258157.891
3467	300594.2032	4258127.203
3468	300576.389	4258118.687
3469	300556.9173	4258109.38
3470	300535.8193	4258102.739
3471	300489.4993	4258100.259
3472	300465.8393	4258119.449
3473	300459.8193	4258125.469
3474	300451.7793	4258123.799
3475	300430.6993	4258118.449
3476	300421.6693	4258119.789
3477	300395.9093	4258118.449
3478	300356.0893	4258102.399
3479	300329.6593	4258088.689
3480	300304.8993	4258087.019
3481	300293.7593	4258093.149
3482	300283.7723	4258101.286
3483	300262.9793	4258118.229
3484	300260.3261	4258118.951
3485	300237.2093	4258125.249
3486	300211.4493	4258115.559
3487	300176.6493	4258112.879
3488	300141.5193	4258124.249
3489	300120.7693	4258136.619
3490	300102.3389	4258145.574
3491	300009.4961	4258152.94
3492	299970.8013	4258138.884
3493	299892.4845	4258129.888
3494	299867.6136	4258125.125
3495	299815.226	4258117.188
3496	299784.0051	4258121.421
3497	299730.8224	4258151.741
3498	299710.2693	4258163.459
3499	299699.8393	4258174.309
3500	299687.3193	4258190.989



ΑΑ	X	Y
3501	299669.3693	4258207.669
3502	299645.0993	4258213.799
3503	299624.2993	4258215.879
3504	299611.3893	4258215.469
3505	299601.8193	4258213.799
3506	299589.7493	4258214.219
3507	299563.1193	4258214.639
3508	299474.1593	4258218.489
3509	299458.3693	4258220.979
3510	299447.9793	4258220.979
3511	299438.8293	4258219.739
3512	299421.7893	4258214.749
3513	299408.0793	4258206.439
3514	299399.7693	4258197.719
3515	299385.2193	4258194.399
3516	299373.9993	4258193.149
3517	299346.8545	4258190.618
3518	299308.7329	4258188.433
3519	299253.6589	4258159.795
3520	299228.7036	4258146.818
3521	299187.0243	4258125.145
3522	299104.5428	4258045.119
3523	299080.9767	4258022.254
3524	299067.3421	4258009.025
3525	299050.5277	4257992.712
3526	299043.1944	4257983.04
3527	298995.7589	4257920.48
3528	298937.815	4257864.918
3529	298755.6467	4257781.397
3530	298733.9419	4257774.496
3531	298702.888	4257764.623
3532	298679.9198	4257757.32
3533	298549.2713	4257715.781
3534	298523.0246	4257710.489
3535	298459.9478	4257672.389
3536	298417.6144	4257613.122
3537	298386.5015	4257530.364
3538	298351.2433	4257512.9
3539	298339.21	4257509.217
3540	298326.1821	4257513.209
3541	298281.3824	4257526.938
3542	298162.9789	4257595.13
3543	298096.7271	4257673.235
3544	298022.7336	4257747.857
3545	298007.021	4257763.703
3546	297999.1171	4257771.674
3547	297984.8441	4257786.068
3548	297947.8872	4257823.338
3549	297772.4531	4258000.261
3550	297635.9278	4258043.653

ΑΑ	X	Y
3551	297580.6145	4258026.274
3552	297529.3893	4257995.829
3553	297500.1393	4257973.999
3554	297481.0193	4257958.469
3555	297471.2793	4257945.929
3556	297436.8093	4257923.839
3557	297423.3093	4257906.359
3558	297387.3293	4257840.309
3559	297379.5293	4257819.249
3560	297354.4556	4257752.025
3561	297339.382	4257733.796
3562	297332.1856	4257725.094
3563	297295.7748	4257709.041
3564	297289.2171	4257706.15
3565	297273.4623	4257712.259
3566	297265.2427	4257712.565
3567	297257.7856	4257712.842
3568	297252.2393	4257713.049
3569	297222.2793	4257723.399
3570	297219.2676	4257724.559
3571	297215.5293	4257725.999
3572	297210.7193	4257726.389
3573	297206.7993	4257725.309
3574	297204.2735	4257723.15
3575	297198.5493	4257718.259
3576	297189.0193	4257718.259
3577	297176.4571	4257720.538
3578	297172.8532	4257720.199
3579	297167.9607	4257722.957
3580	297155.0193	4257727.269
3581	297132.4963	4257742.951
3582	297117.0176	4257753.728
3583	297114.3743	4257755.315
3584	297084.9393	4257771.659
3585	297078.7467	4257776.71
3586	297058.5793	4257793.159
3587	297028.7393	4257823.669
3588	297000.9893	4257871.519
3589	296990.8793	4257904.139
3590	296989.7693	4257928.549
3591	296988.6593	4257971.819
3592	296983.1093	4258021.739
3593	296977.5593	4258057.249
3594	296967.5693	4258084.979
3595	296955.3593	4258104.949
3596	296937.5993	4258126.029
3597	296935.3993	4258136.639
3598	296925.9993	4258142.069
3599	296897.1793	4258145.179
3600	296874.0893	4258143.949



AA	X	Y
3601	296854.7793	4258136.129
3602	296830.4493	4258099.839
3603	296817.7493	4258080.169
3604	296812.9868	4258069.946
3605	296811.6093	4258066.989
3606	296809.623	4258056.604
3607	296807.4508	4258050.183
3608	296802.4354	4258040.159
3609	296800.6193	4258036.529
3610	296791.1593	4258028.489
3611	296786.7054	4258027.563
3612	296777.8202	4258025.718
3613	296775.8993	4258025.319
3614	296749.7693	4258027.479
3615	296734.4393	4258023.299
3616	296694.7293	4258015.639
3617	296666.8693	4258011.459
3618	296653.194	4258009.917
3619	296623.6793	4258006.589
3620	296601.4549	4258007.67
3621	296595.1193	4258007.979
3622	296589.3409	4258008.916
3623	296569.3393	4258012.159
3624	296538.6893	4258026.779
3625	296516.6749	4258049.39
3626	296497.4708	4258061.706
3627	296495.0893	4258063.059
3628	296455.2573	4258085.679
3629	296448.6893	4258089.409
3630	296441.8489	4258099.299
3631	296419.2439	4258128.859
3632	296368.2654	4258213.17
3633	296351.9506	4258215.85
3634	296327.178	4258219.921
3635	296311.6366	4258204.972
3636	296289.9407	4258191.743
3637	296265.599	4258177.455
3638	296229.6156	4258159.464
3639	296198.7596	4258148.002
3640	296166.2293	4258140.319
3641	296145.2393	4258141.349
3642	296111.459	4258148.276
3643	296108.6193	4258148.859
3644	296096.3083	4258151.594
3645	296089.3607	4258153.138
3646	296087.5593	4258153.539
3647	296065.5793	4258158.419
3648	296030.3093	4258167.379
3649	296025.5793	4258168.059
3650	295999.9993	4258171.729

AA	X	Y
3651	295990.0321	4258175.296
3652	295952.7102	4258168.367
3653	295910.0076	4258172.032
3654	295898.2984	4258162.079
3655	295857.0908	4258127.053
3656	295837.1636	4258087.752
3657	295827.1937	4258068.089
3658	295824.8329	4258063.433
3659	295819.5693	4258048.779
3660	295813.6393	4258039.049
3661	295811.5293	4258029.099
3662	295804.1193	4258006.449
3663	295800.6493	4257992.139
3664	295797.1293	4257977.659
3665	295794.5485	4257967.661
3666	295792.0493	4257957.979
3667	295783.4393	4257938.019
3668	295769.7693	4257915.299
3669	295769.1193	4257914.389
3670	295744.1193	4257879.109
3671	295743.1593	4257877.759
3672	295724.7393	4257858.279
3673	295716.2193	4257846.469
3674	295714.5093	4257844.089
3675	295697.9793	4257833.809
3676	295691.5193	4257828.119
3677	295672.4193	4257818.379
3678	295665.9793	4257816.509
3679	295645.9193	4257810.679
3680	295617.1102	4257804.125
3681	295606.8187	4257801.783
3682	295595.3693	4257799.179
3683	295554.6693	4257795.569
3684	295515.5293	4257801.989
3685	295462.7793	4257827.639
3686	295452.6093	4257835.399
3687	295432.3893	4257857.099
3688	295420.2493	4257869.109
3689	295395.6093	4257889.489
3690	295367.8293	4257914.629
3691	295358.7793	4257925.239
3692	295343.357	4257940.325
3693	295339.0245	4257944.563
3694	295328.0193	4257955.329
3695	295299.9093	4257984.769
3696	295277.0893	4258000.679
3697	295271.5393	4258006.309
3698	295269.9693	4258007.909
3699	295251.9493	4258019.549
3700	295228.4393	4258029.179



ΑΑ	X	Y
3701	295213.2593	4258042.739
3702	295210.3293	4258045.359
3703	295202.5093	4258053.249
3704	295176.4093	4258079.629
3705	295157.5193	4258100.429
3706	295132.0793	4258130.079
3707	295120.9193	4258136.699
3708	295116.5293	4258137.609
3709	295104.6847	4258132.463
3710	295008.729	4258105.652
3711	294899.5087	4258094.363
3712	294800.0425	4258064.975
3713	294745.9137	4258042.767
3714	294677.7492	4258007.229
3715	294619.8998	4257985.506
3716	294589.0637	4257965.951
3717	294444.5656	4257861.67
3718	294209.9979	4257695.996
3719	294164.7874	4257674.865
3720	294117.9979	4257652.996
3721	294075.1185	4257620.375
3722	294062.8596	4257574.285
3723	294080.9126	4257516.609
3724	294065.6726	4257440.409
3725	294036.4625	4257403.156
3726	294024.9799	4257381.713
3727	293995.8688	4257358.853
3728	293955.7083	4257275.064
3729	293925.2727	4257209.508
3730	293888.3633	4257135.293
3731	293831.61	4257042.424
3732	293776.6485	4256929.995
3733	293736.9979	4256851.996
3734	293702.0553	4256732.696
3735	293698.75	4256713.43
3736	293698.2693	4256710.628
3737	293698.2693	4256691.679
3738	293690.3893	4256656.629
3739	293689.9293	4256654.579
3740	293689.6293	4256653.239
3741	293689.4993	4256652.629
3742	293687.8293	4256645.229
3743	293686.8293	4256640.769
3744	293685.8879	4256638.458
3745	293678.0093	4256619.119
3746	293677.1293	4256616.619
3747	293676.8922	4256615.941
3748	293664.9593	4256581.829
3749	293655.4893	4256556.919
3750	293651.0902	4256545.341

ΑΑ	X	Y
3751	293644.7093	4256528.549
3752	293638.8845	4256520.838
3753	293627.7793	4256506.139
3754	293622.1563	4256498.697
3755	293600.2993	4256469.769
3756	293581.2793	4256431.159
3757	293559.3593	4256414.449
3758	293525.6593	4256376.319
3759	293487.5593	4256333.199
3760	293473.9514	4256317.816
3761	293464.6319	4256309.67
3762	293463.6922	4256308.848
3763	293459.4854	4258275.442
3764	293456.9979	4256302.996
3765	293446.4489	4256283.927
3766	293432.9793	4256268.369
3767	293424.8779	4256259.583
3768	293404.8093	4256237.819
3769	293398.9793	4256234.589
3770	293390.5193	4256229.899
3771	293382.8493	4256225.649
3772	293356.9193	4256213.479
3773	293339.8093	4256204.479
3774	293338.4001	4256203.737
3775	293331.1678	4256199.929
3776	293323.9293	4256196.119
3777	293319.5693	4256192.339
3778	293311.4798	4256184.129
3779	293308.4342	4256181.91
3780	293298.3131	4256170.777
3781	293288.5904	4256160.082
3782	293272.4451	4256142.322
3783	293256.8404	4256125.157
3784	293254.5195	4256122.021
3785	293230.6293	4256095.019
3786	293205.8293	4256067.719
3787	293201.1693	4256057.799
3788	293201.1913	4256056.178
3789	293201.3904	4256041.532
3790	293201.4893	4256034.249
3791	293199.0194	4256027.549
3792	293191.5801	4256005.154
3793	293189.2667	4255989.197
3794	293178.6558	4255916.004
3795	293167.5959	4255851.632
3796	293131.8245	4255754.872
3797	293106.4244	4255708.438
3798	293073.1589	4255660.454
3799	293061.9295	4255649.515
3800	293056.0212	4255648.509



AA	X	Y
3801	293036.5743	4255639.778
3802	293026.6524	4255623.903
3803	293021.4737	4255607.676
3804	293020.6993	4255605.25
3805	293020.7738	4255604.622
3806	293018.3093	4255593.869
3807	293021.169	4255555.025
3808	293021.0961	4255554.053
3809	293021.2777	4255553.549
3810	293021.3793	4255552.169
3811	293022.1323	4255551.175
3812	293024.668	4255544.131
3813	293029.3438	4255541.656
3814	293031.0993	4255539.339
3815	293038.0038	4255531.746
3816	293040.9293	4255528.529
3817	293041.2926	4255524.728
3818	293042.3393	4255513.779
3819	293041.2258	4255511.281
3820	293039.2093	4255506.759
3821	293043.9859	4255488.779
3822	293045.8873	4255473.277
3823	293064.3556	4255452.85
3824	293075.865	4255434.196
3825	293086.9775	4255409.59
3826	293098.7528	4255376.79
3827	293100.7001	4255354.732
3828	293100.9584	4255351.806
3829	293102.9471	4255329.278
3830	293086.9979	4255256.996
3831	293075.6556	4255210.747
3832	293046.2089	4255146.953
3833	293042.9979	4255139.996
3834	293042.2677	4255095.457
3835	293041.9979	4255078.996
3836	293040.9979	4255033.996
3837	293031.2007	4254990.696
3838	293024.0065	4254985.303
3839	293017.4436	4254980.383
3840	292987.3795	4254957.845
3841	292968.2124	4254946.8
3842	292950.353	4254927.618
3843	292942.7463	4254915.711
3844	292931.9979	4254889.996
3845	292932.4936	4254817.485
3846	292934.478	4254762.914
3847	292923.9979	4254732.996
3848	292886.8529	4254674.279
3849	292866.3477	4254595.565
3850	292863.3711	4254534.38

AA	X	Y
3851	292855.9979	4254506.996
3852	292843.6261	4254473.687
3853	292820.7069	4254422.262
3854	292808.4699	4254412.01
3855	292792.9256	4254408.372
3856	292771.0975	4254407.38
3857	292759.8527	4254402.419
3858	292737.9979	4254388.996
3859	292719.8343	4254359.424
3860	292717.9979	4254330.996
3861	292711.8497	4254318.228
3862	292694.3681	4254295.924
3863	292682.4619	4254280.049
3864	292672.4214	4254262.66
3865	292666.11	4254255.676
3866	292640.4219	4254254.866
3867	292607.754	4254233.466
3868	292575.9832	4254199.01
3869	292556.0582	4254172.612
3870	292516.8067	4254135.625
3871	292516.0448	4254134.288
3872	292494.4901	4254100.462
3873	292482.6602	4254065.374
3874	292459.8915	4254005.757
3875	292447.3237	4253966.731
3876	292428.8029	4253926.382
3877	292413.2585	4253882.725
3878	292404.3288	4253851.967
3879	292393.5945	4253808.122
3880	292386.9919	4253801.097
3881	292374.6531	4253787.97
3882	292347.1471	4253770.226
3883	292331.3685	4253759.146
3884	292328.4598	4253756.777
3885	292327.3093	4253756.809
3886	292304.4065	4253733.374
3887	292249.1844	4253715.024
3888	292222.1777	4253716.621
3889	292222.9276	4253715.097
3890	292216.4826	4253715.879
3891	292214.7349	4253716.091
3892	292173.4753	4253721.094
3893	292127.7382	4253736.034
3894	292120.5115	4253739.431
3895	292110.3357	4253742.925
3896	292090.4661	4253740.793
3897	292039.492	4253725.821
3898	291991.3583	4253724.541
3899	291959.0212	4253739.776
3900	291947.3553	4253745.272



ΑΑ	Χ	Υ
3901	291944.2486	4253747.919
3902	291923.3191	4253783.622
3903	291887.499	4253828.863
3904	291832.7301	4253876.488
3905	291781.1363	4253893.157
3906	291759.7496	4253907.682
3907	291742.0122	4253926.769
3908	291703.3107	4253968.414
3909	291681.0267	4253979.826
3910	291667.1361	4253982.803
3911	291651.9225	4253982.142
3912	291631.4173	4253972.22
3913	291603.3052	4253961.306
3914	291572.5474	4253945.761
3915	291534.5134	4253920.295
3916	291499.7868	4253894.167
3917	291459.1693	4253859.159
3918	291452.1593	4253852.719
3919	291432.0593	4253834.609
3920	291414.5982	4253817.839
3921	291402.4493	4253805.579
3922	291397.5856	4253799.436
3923	291381.8293	4253779.539
3924	291379.1672	4253777.367
3925	291362.3293	4253763.629
3926	291338.0494	4253742.019
3927	291311.0594	4253713.148
3928	291304.0393	4253705.639
3929	291296.3093	4253703.259
3930	291289.0338	4253701.017
3931	291281.7393	4253698.769
3932	291274.2193	4253696.449
3933	291273.3814	4253696.664
3934	291269.6282	4253697.627
3935	291249.6693	4253702.759
3936	291245.9393	4253702.929
3937	291238.6193	4253703.159
3938	291234.1493	4253703.299
3939	291222.1493	4253704.149
3940	291212.1393	4253706.389
3941	291203.2993	4253708.369
3942	291173.0293	4253709.179
3943	291166.7793	4253707.599
3944	291161.2693	4253706.199
3945	291151.2193	4253702.399
3946	291147.1093	4253700.839
3947	291145.4093	4253699.619
3948	291131.7993	4253689.749
3949	291118.7793	4253678.279
3950	291098.6893	4253675.599

ΑΑ	Χ	Υ
3951	291084.7593	4253662.199
3952	291078.0193	4253655.719
3953	291065.5293	4253640.639
3954	291058.9393	4253632.689
3955	291021.1493	4253564.519
3956	291012.1493	4253548.289
3957	290999.2093	4253524.939
3958	290980.6893	4253448.209
3959	290980.4493	4253440.989
3960	290980.4324	4253440.485
3961	290979.7277	4253419.434
3962	290979.4764	4253411.928
3963	290977.9993	4253367.809
3964	290978.944	4253344.979
3965	290980.6894	4253302.799
3966	290969.0493	4253260.459
3967	290967.5593	4253260.379
3968	290943.3678	4253258.992
3969	290936.5093	4253258.599
3970	290934.0593	4253256.509
3971	290909.7193	4253235.709
3972	290891.3493	4253228.559
3973	290888.2993	4253220.089
3974	290880.7194	4253199.036
3975	290876.5293	4253187.399
3976	290874.0391	4253180.477
3977	290867.1493	4253161.329
3978	290843.9012	4253141.729
3979	290842.1693	4253140.269
3980	290833.4093	4253132.889
3981	290807.9893	4253125.939
3982	290803.1293	4253124.619
3983	290800.0526	4253123.778
3984	290797.8593	4253123.179
3985	290785.0293	4253119.669
3986	290771.5286	4253098.686
3987	290770.4493	4253097.009
3988	290754.0393	4253071.509
3989	290744.2393	4253055.989
3990	290725.4593	4253026.259
3991	290725.3948	4253026.12
3992	290717.7693	4253009.739
3993	290689.0393	4253004.179
3994	290680.0593	4253008.699
3995	290677.3129	4253010.083
3996	290676.2093	4253010.639
3997	290662.3193	4253017.639
3998	290660.5893	4253018.859
3999	290657.4993	4253015.369
4000	290654.1293	4253011.559



AA	X	Y
4001	290643.5993	4252999.659
4002	290633.8997	4252990.863
4003	290611.4993	4252970.549
4004	290597.6653	4252958
4005	290586.627	4252944.892
4006	290586.0921	4252944.297
4007	290579.2993	4252935.209
4008	290575.0493	4252929.509
4009	290559.6393	4252912.479
4010	290533.6868	4252883.785
4011	290521.2893	4252870.079
4012	290484.3593	4252815.849
4013	290470.3193	4252804.769
4014	290458.4993	4252795.899
4015	290448.1493	4252782.989
4016	290442.8617	4252771.79
4017	290441.8693	4252769.689
4018	290436.3293	4252756.029
4019	290428.4693	4252750.169
4020	290415.1393	4252740.239
4021	290402.1493	4252730.549
4022	290391.9394	4252723.689
4023	290382.3993	4252726.549
4024	290373.8293	4252730.599
4025	290366.1993	4252733.219
4026	290361.7593	4252732.249
4027	290359.053	4252731.653
4028	290351.1473	4252716.689
4029	290344.8635	4252689.569
4030	290340.564	4252664.764
4031	290334.9416	4252628.715
4032	290327.6655	4252595.642
4033	290326.807	4252569.744
4034	290316.4207	4252482.201
4035	290299.5068	4252442.469
4036	290283.4139	4252412.071
4037	290276.9459	4252399.854
4038	290269.3907	4252385.723
4039	290262.817	4252373.452
4040	290266.4805	4252364.461
4041	290268.7956	4252352.555
4042	290265.4883	4252344.618
4043	290260.5273	4252340.318
4044	290253.3551	4252330.504
4045	290220.1316	4252285.041
4046	290211.7738	4252270.63
4047	290184.4129	4252267.329
4048	290149.4021	4252264.912
4049	290130.1532	4252271.611
4050	290105.4151	4252270.534

AA	X	Y
4051	290078.5031	4252270.062
4052	290062.3784	4252271.677
4053	290049.0547	4252273.012
4054	290015.7171	4252271.424
4055	290013.5847	4252270.098
4056	289999.7953	4252271.182
4057	289976.3689	4252269.076
4058	289970.2005	4252268.507
4059	289968.8146	4252268.334
4060	289968.1922	4252268.445
4061	289942.2763	4252261.911
4062	289915.6844	4252252.458
4063	289880.2984	4252237.569
4064	289842.2873	4252225.02
4065	289842.0894	4252224.535
4066	289811.3331	4252207.162
4067	289788.6168	4252189.034
4068	289762.2343	4252159.723
4069	289744.365	4252137.676
4070	289732.674	4252131.213
4071	289727.0728	4252130.923
4072	289725.8643	4252130.773
4073	289724.9299	4252130.394
4074	289714.8903	4252131.432
4075	289713.9363	4252131.599
4076	289703.807	4252132.116
4077	289692.6594	4252129.799
4078	289691.7699	4252129.426
4079	289691.0731	4252129.196
4080	289690.8821	4252129.053
4081	289680.5457	4252125.642
4082	289679.3087	4252124.999
4083	289678.8134	4252124.914
4084	289668.3059	4252120.983
4085	289647.7037	4252120.5
4086	289636.8015	4252124.043
4087	289626.6349	4252127.347
4088	289605.406	4252134.247
4089	289557.7809	4252144.83
4090	289511.2142	4252145.888
4091	289457.2391	4252125.78
4092	289424.4307	4252095.088
4093	289388.4473	4252087.68
4094	289364.1056	4252097.205
4095	289327.0638	4252116.255
4096	289270.972	4252139.538
4097	289236.047	4252151.18
4098	289204.2969	4252126.838
4099	289175.7218	4252131.072
4100	289104.8134	4252152.238



ΑΑ	Χ	Υ
4101	289041.3132	4252213.622
4102	288990.8993	4252337.449
4103	288981.2693	4252349.249
4104	288976.3876	4252361.587
4105	288966.3517	4252367.47
4106	288971.5363	4252392.097
4107	288970.8932	4252397.692
4108	288969.6819	4252408.23
4109	288968.944	4252414.65
4110	288964.5371	4252423.464
4111	288958.3155	4252432.796
4112	288945.8149	4252440.177
4113	288936.8663	4252469.877
4114	288935.6675	4252472.947
4115	288933.4294	4252478.68
4116	288925.8581	4252487.365
4117	288921.8481	4252490.336
4118	288886.05	4252516.856
4119	288858.076	4252544.308
4120	288828.5091	4252567.17
4121	288828.1378	4252567.18
4122	288811.3462	4252572.467
4123	288794.841	4252575.348
4124	288774.8628	4252566.7
4125	288773.3348	4252566.262
4126	288772.9188	4252565.795
4127	288748.1737	4252551.417
4128	288717.779	4252538.117
4129	288682.313	4252517.62
4130	288648.6053	4252499.06
4131	288635.1211	4252491.635
4132	288632.8982	4252490.411
4133	288631.2536	4252489.656
4134	288592.0683	4252468.532
4135	288591.4008	4252467.671
4136	288593.2182	4252468.047
4137	288586.5737	4252465.428
4138	288581.7013	4252463.508
4139	288562.5297	4252455.952
4140	288421.7637	4252419.68
4141	288316.9105	4252399.965
4142	288306.5109	4252390.47
4143	288289.6834	4252386.342
4144	288276.3484	4252387.612
4145	288259.8384	4252388.565
4146	288242.6933	4252388.565
4147	288218.1459	4252393.269
4148	288180.3847	4252386.729
4149	288022.0346	4252359.303
4150	287921.7221	4252302.966

ΑΑ	Χ	Υ
4151	287853.935	4252258.4
4152	287796.5203	4252220.3
4153	287780.3806	4252209.716
4154	287707.3555	4252175.585
4155	287686.1888	4252168.971
4156	287609.4595	4252151.508
4157	287538.8156	4252134.31
4158	287444.3591	4252106.264
4159	287398.5861	4252091.712
4160	287242.0218	4252048.958
4161	287174.4836	4252023.449
4162	287146.1731	4252011.014
4163	287115.746	4251993.022
4164	287081.6893	4251979.659
4165	287075.7233	4251986.078
4166	287075.6932	4251986.904
4167	287071.1202	4251985.049
4168	286948.565	4251898.53
4169	286889.0236	4251825.763
4170	286767.3538	4251498.844
4171	286668.3598	4251232.853
4172	286408.0176	4250533.33
4173	286356.1358	4250408.451
4174	286303.3808	4250281.471
4175	286287.5801	4250239.805
4176	286322.8113	4250178.954
4177	286260.2954	4250167.858
4178	286175.2306	4250149.827
4179	285990.3489	4250110.639
4180	285956.3144	4250105.673
4181	285918.3364	4250100.131
4182	285911.1803	4250137.445
4183	285893.2901	4250187.537
4184	285893.8714	4250190.462
4185	285899.9932	4250221.262
4186	285908.1134	4250234.052
4187	285912.684	4250283.87
4188	285912.8953	4250286.173
4189	285915.7503	4250332.93
4190	285915.9697	4250341.457
4191	285916.6379	4250367.426
4192	285921.468	4250555.151
4193	285922.9626	4250599.094
4194	285929.2757	4250678.179
4195	285935.976	4250762.114
4196	285948.4329	4250837.115
4197	285952.7593	4250841.589
4198	285961.7841	4250845.131
4199	285983.7893	4250873.709
4200	285991.3993	4250887.269



ΑΑ	X	Y
4201	285995.0393	4250905.129
4202	286003.2993	4250925.959
4203	286016.5293	4250933.569
4204	286016.9523	4250933.55
4205	286037.9493	4250932.599
4206	286057.0093	4250969.339
4207	286055.0616	4250970.591
4208	286036.4893	4250982.529
4209	286100.7893	4251076.059
4210	286126.4493	4251152.519
4211	286127.1094	4251184.929
4212	286137.5046	4251218.537
4213	286155.0948	4251231.69
4214	286177.9418	4251248.774
4215	286203.4428	4251276.825
4216	286213.6432	4251289.575
4217	286216.5576	4251308.155
4218	286219.8363	4251333.656
4219	286226.758	4251359.885
4220	286228.9438	4251390.486
4221	286237.3227	4251408.337
4222	286247.8874	4251443.674
4223	286269.6409	4251519.811
4224	286272.6598	4251530.378
4225	286286.1389	4251597.773
4226	286298.5251	4251642.946
4227	286316.3758	4251674.276
4228	286337.1409	4251700.87
4229	286359.3632	4251730.014
4230	286375.7567	4251758.065
4231	286385.5628	4251786.851
4232	286383.5881	4251790.32
4233	286348.6789	4251820.9
4234	286347.8808	4251821.909
4235	286326.8935	4251840.765
4236	286319.779	4251856.523
4237	286320.5501	4251858.296
4238	286320.9074	4251860.599
4239	286321.6783	4251862.388
4240	286322.4225	4251865.61
4241	286323.1979	4251867.412
4242	286326.3475	4251898.55
4243	286326.3256	4251900.998
4244	286323.4463	4251947.475
4245	286325.6905	4251957.888
4246	286328.3868	4251970.4
4247	286332.1616	4251987.915
4248	286336.8605	4252009.026
4249	286356.6095	4252033.419
4250	286360.4913	4252046.258

ΑΑ	X	Y
4251	286370.8566	4252061.26
4252	286371.3994	4252062.378
4253	286371.579	4252062.949
4254	286372.1252	4252063.872
4255	286387.8043	4252080.705
4256	286401.6091	4252098.938
4257	286402.2095	4252099.934
4258	286420.188	4252119.627
4259	286433.5395	4252134.308
4260	286433.994	4252135.153
4261	286434.4353	4252135.776
4262	286446.0186	4252145.332
4263	286446.8913	4252146.151
4264	286461.3747	4252155.648
4265	286471.4075	4252165.61
4266	286471.8258	4252166.18
4267	286487.379	4252180.288
4268	286488.2081	4252181.045
4269	286501.3756	4252197.116
4270	286513.3191	4252209.672
4271	286513.6256	4252210.871
4272	286526.0747	4252232.28
4273	286526.3451	4252232.758
4274	286539.6457	4252250.85
4275	286546.7433	4252265.156
4276	286566.6323	4252279.66
4277	286576.6577	4252282.394
4278	286591.6958	4252289.685
4279	286623.5948	4252299.255
4280	286640.9114	4252312.015
4281	286646.1064	4252319.711
4282	286658.0943	4252326.534
4283	286673.1251	4252331.898
4284	286678.2051	4252332.32
4285	286685.1143	4252329.787

ΥΠΟΥΡΓΕΙΟ ΠΕΡΙΒΑΛΛΟΝΤΟΣ ΚΑΙ ΕΝΕΡΓΕΙΑΣ  
ΘΕΩΡΗΘΗΚΕ ΜΕ ΤΗΝ ΥΠ' ΑΡΙΘ. 33643/687/24-03-2026 ΠΡΑΞΗ

Η ΠΡΟΪΣΤΑΜΕΝΗ ΤΗΣ Δ/ΝΣΗΣ  
ΤΟΠΟΓΡΑΦΙΚΩΝ ΕΦΑΡΜΟΓΩΝ  
κ.α.α.  
ΕΛΕΝΗ ΚΑΟΥΝΗ  
ΤΟΠΟΓΡΑΦΟΣ ΜΗΧΑΝΙΚΟΣ



Η απόφαση αυτή να δημοσιευθεί στην Εφημερίδα της Κυβερνήσεως.

Αθήνα, 24 Μαρτίου 2026

Ο Προϊστάμενος της Γενικής Διεύθυνσης

ΚΩΝΣΤΑΝΤΙΝΟΣ ΔΗΜΟΠΟΥΛΟΣ



## ΕΘΝΙΚΟ ΤΥΠΟΓΡΑΦΕΙΟ

Το Εθνικό Τυπογραφείο αποτελεί δημόσια υπηρεσία υπαγόμενη στην Προεδρία της Κυβέρνησης και έχει την ευθύνη τόσο για τη σύνταξη, διαχείριση, εκτύπωση και κυκλοφορία των Φύλλων της Εφημερίδας της Κυβερνήσεως (ΦΕΚ), όσο και για την κάλυψη των εκτυπωτικών - εκδοτικών αναγκών του δημοσίου και του ευρύτερου δημόσιου τομέα (ν. 3469/2006/Α' 131 και π.δ. 29/2018/Α' 58).

**1. ΦΥΛΛΟ ΤΗΣ ΕΦΗΜΕΡΙΔΑΣ ΤΗΣ ΚΥΒΕΡΝΗΣΕΩΣ (ΦΕΚ)**

- Τα **ΦΕΚ σε ηλεκτρονική μορφή** διατίθενται δωρεάν στο **www.et.gr**, την επίσημη ιστοσελίδα του Εθνικού Τυπογραφείου. Όσα ΦΕΚ δεν έχουν ψηφιοποιηθεί και καταχωριστεί στην ανωτέρω ιστοσελίδα, ψηφιοποιούνται και αποστέλλονται επίσης δωρεάν με την υποβολή αιτήματος στην ηλεκτρονική διεύθυνση **feksales@et.gr**.
- Τα **ΦΕΚ σε έντυπη μορφή** διατίθενται σε μεμονωμένα φύλλα είτε απευθείας από το Τμήμα Πωλήσεων και Συνδρομητών, είτε ταχυδρομικά με την αποστολή αιτήματος παραγγελίας στην ηλεκτρονική διεύθυνση **feksales@et.gr**.
  - Το κόστος ενός ασπρόμαυρου ΦΕΚ από 1 έως 16 σελίδες είναι 1,00 €, αλλά για κάθε επιπλέον οκτασέλιδο (ή μέρος αυτού) προσαυξάνεται κατά 0,20 €. Το κόστος ενός έγχρωμου ΦΕΚ από 1 έως 16 σελίδες είναι 1,50 €, αλλά για κάθε επιπλέον οκτασέλιδο (ή μέρος αυτού) προσαυξάνεται κατά 0,30 €.
  - Το τεύχος Α.Σ.Ε.Π. διατίθεται δωρεάν.
  - Υπάρχει δυνατότητα ετήσιας συνδρομής οποιουδήποτε τεύχους σε έντυπη μορφή μέσω του Τμήματος Πωλήσεων και Συνδρομητών.

**• Τρόποι αποστολής κειμένων προς δημοσίευση:**

- A.** Αποστολή των εγγράφων προς δημοσίευση στο ΦΕΚ στην ηλεκτρονική διεύθυνση **https://eservices.et.gr**. Σχετικές εγκύκλιοι και οδηγίες στην ηλεκτρονική διεύθυνση του Εθνικού Τυπογραφείου (**www.et.gr**) στη διαδρομή **Ανακοινώσεις → Εγκύκλιοι**.
- B.** Κατ' εξαίρεση, όσοι πολίτες δεν διαθέτουν προηγμένη ψηφιακή υπογραφή μπορούν είτε να αποστέλλουν ταχυδρομικά, είτε να καταθέτουν με εκπρόσωπό τους κείμενα προς δημοσίευση εκτυπωμένα σε χαρτί στο Τμήμα Παραλαβής και Καταχώρισης Δημοσιευμάτων.

• Πληροφορίες, σχετικά με την αποστολή/κατάθεση εγγράφων προς δημοσίευση, την ημερήσια κυκλοφορία των Φ.Ε.Κ., με την πώληση των τευχών και με τους ισχύοντες τιμοκαταλόγους για όλες τις υπηρεσίες μας, περιλαμβάνονται στον ιστότοπο (**www.et.gr**). Επίσης μέσω του ιστότοπου δίδονται πληροφορίες σχετικά με την πορεία δημοσίευσης των εγγράφων, με βάση τον Κωδικό Αριθμό Δημοσιεύματος (ΚΑΔ). Πρόκειται για τον αριθμό που εκδίδει το Εθνικό Τυπογραφείο για όλα τα κείμενα που πληρούν τις προϋποθέσεις δημοσίευσης.

**2. ΕΚΤΥΠΩΤΙΚΕΣ - ΕΚΔΟΤΙΚΕΣ ΑΝΑΓΚΕΣ ΤΟΥ ΔΗΜΟΣΙΟΥ**

Το Εθνικό Τυπογραφείο ανταποκρινόμενο σε αιτήματα υπηρεσιών και φορέων του δημοσίου αναλαμβάνει να σχεδιάσει και να εκτυπώσει έντυπα, φυλλάδια, βιβλία, αφίσες, μπλοκ, μηχανογραφικά έντυπα, φακέλους για κάθε χρήση, κ.ά.

Επίσης σχεδιάζει ψηφιακές εκδόσεις, λογότυπα και παράγει οπτικοακουστικό υλικό.

Ταχυδρομική Διεύθυνση: **Καποδιστρίου 34, 10432 Αθήνα**

**ΤΗΛΕΦΩΝΙΚΟ ΚΕΝΤΡΟ: 210 5279000**

Ιστότοπος: **www.et.gr**

Πληροφορίες σχετικά με την λειτουργία του ιστότοπου: **helpdesk.et@et.gr**

Αποστολή εγγράφων προς δημοσίευση στο ΦΕΚ στην ηλεκτρονική διεύθυνση  
**https://eservices.et.gr**

**ΕΞΥΠΗΡΕΤΗΣΗ ΚΟΙΝΟΥ**

**Πωλήσεις - Συνδρομές:** (Ισόγειο, τηλ. 210 5279178 - 180)

**Πληροφορίες:** (Ισόγειο, Γραφείο 3 και τηλεφ. κέντρο 210 5279000)

**Παραλαβή Δημοσιευτέας Ύλης:** (Ισόγειο, τηλ. 210 5279139)

**Ωράριο για το κοινό:** Δευτέρα έως και Παρασκευή: 8:00 - 13:30

